

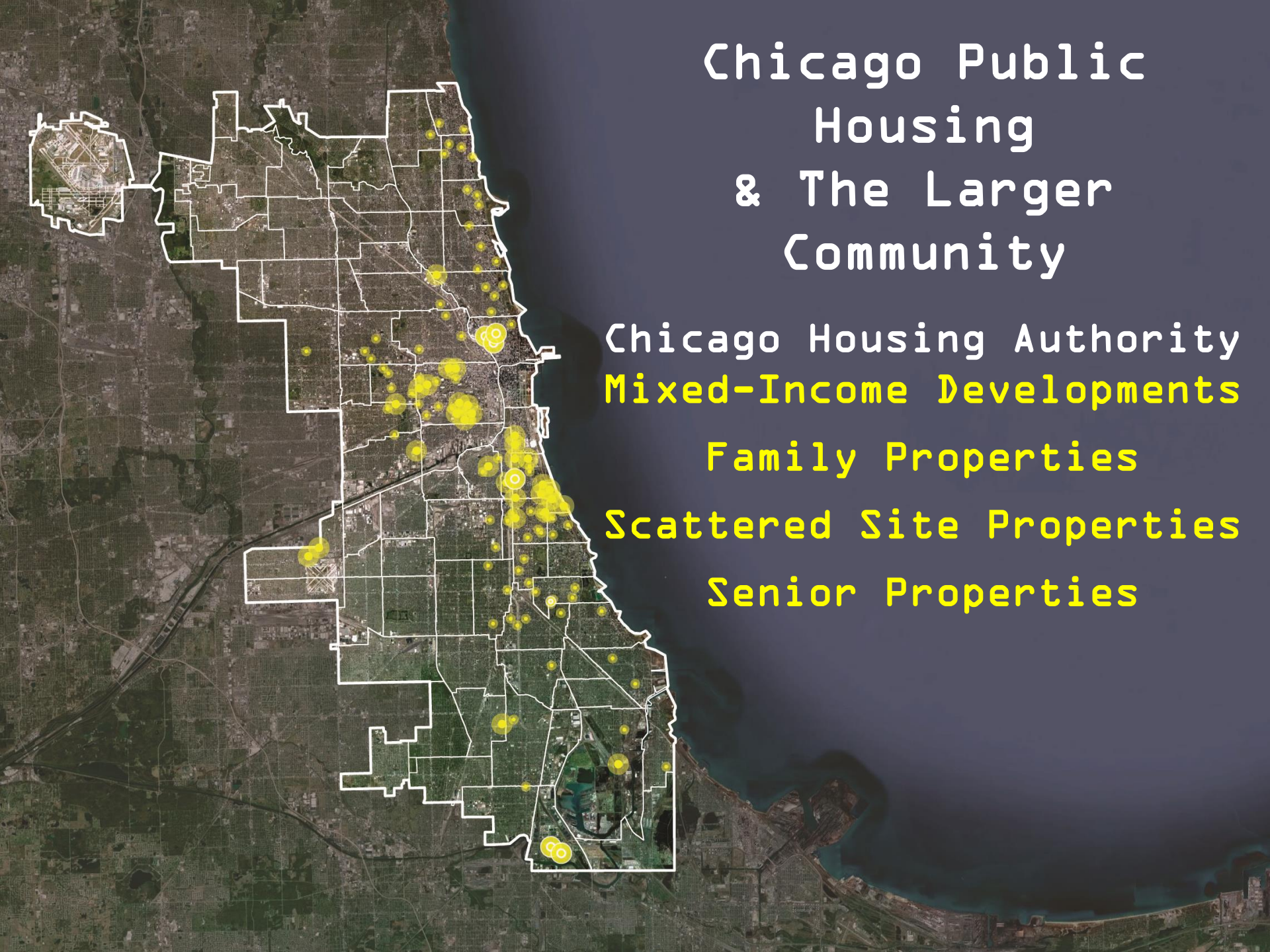
Chicago Public Housing & The Larger Community

Chicago Housing Authority
Mixed-Income Developments

Family Properties

Scattered Site Properties

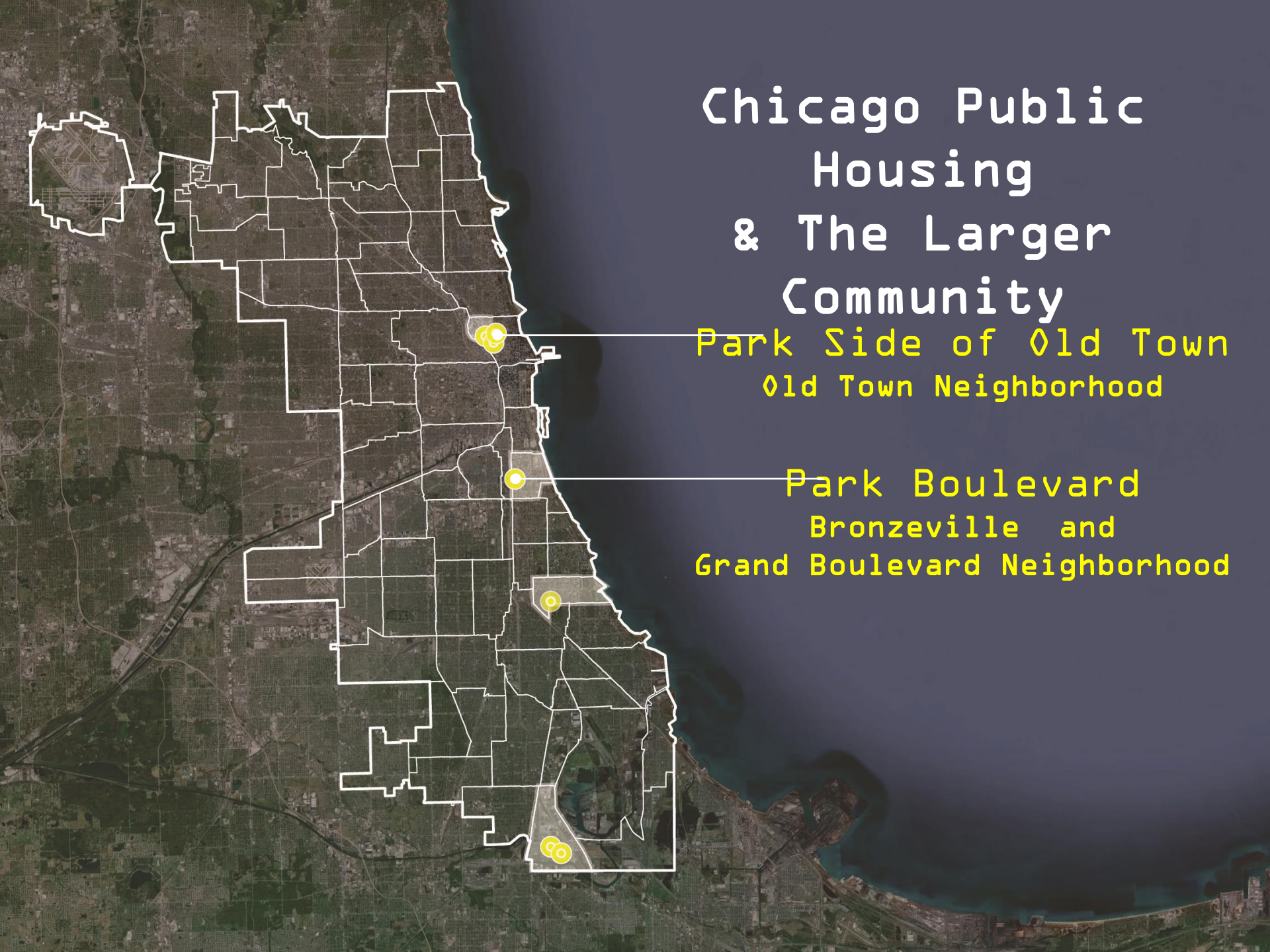
Senior Properties



Chicago Public Housing & The Larger Community

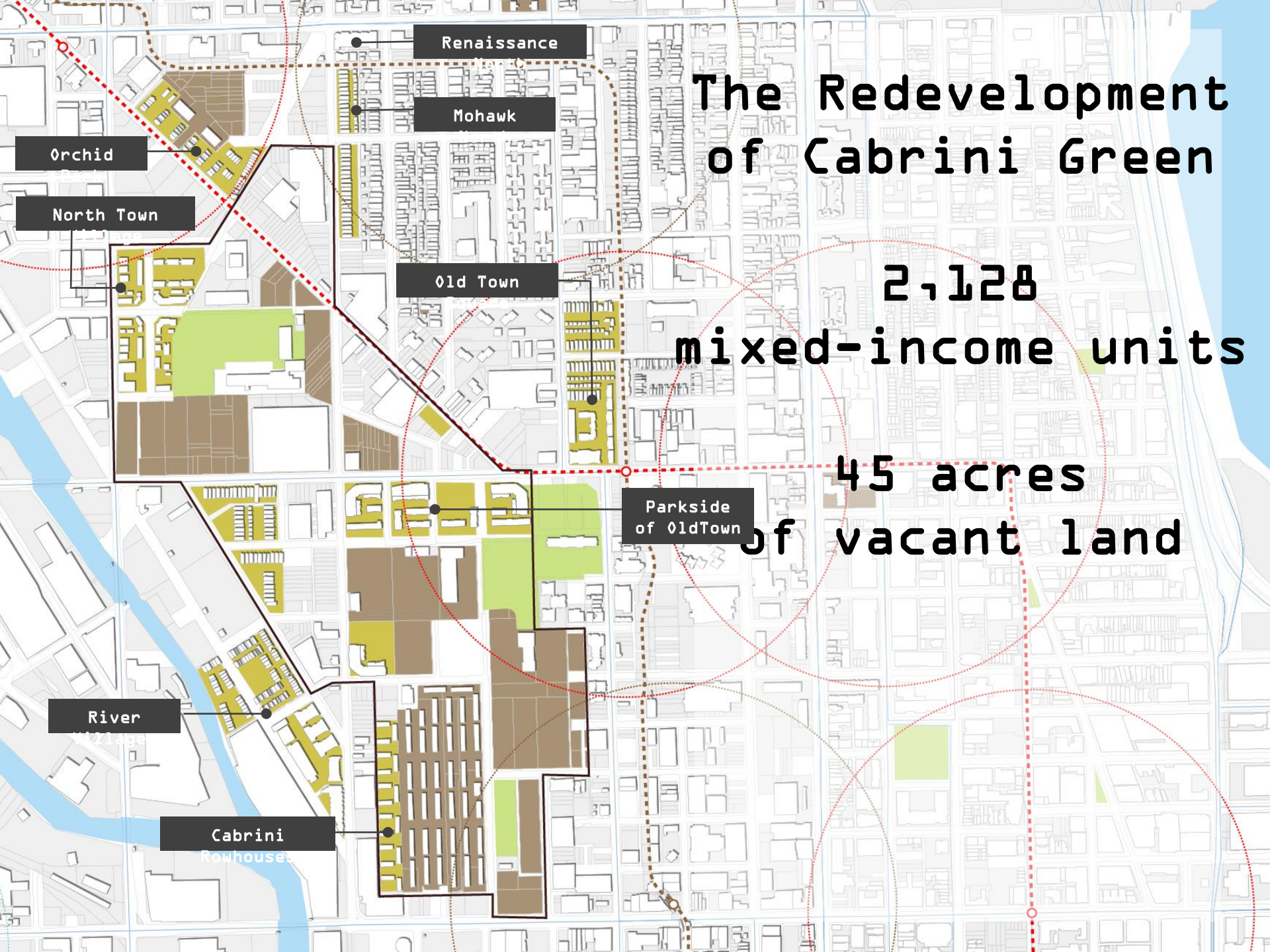
Park Side of Old Town
Old Town Neighborhood

Park Boulevard
Bronzeville and
Grand Boulevard Neighborhood









Renaissance

Mohawk

Orchid

North Town

Old Town

Parkside
of Old Town

River

Cabrini
Rowhouses

The Redevelopment of Cabrini Green

2,128
mixed-income units

45 acres
of vacant land





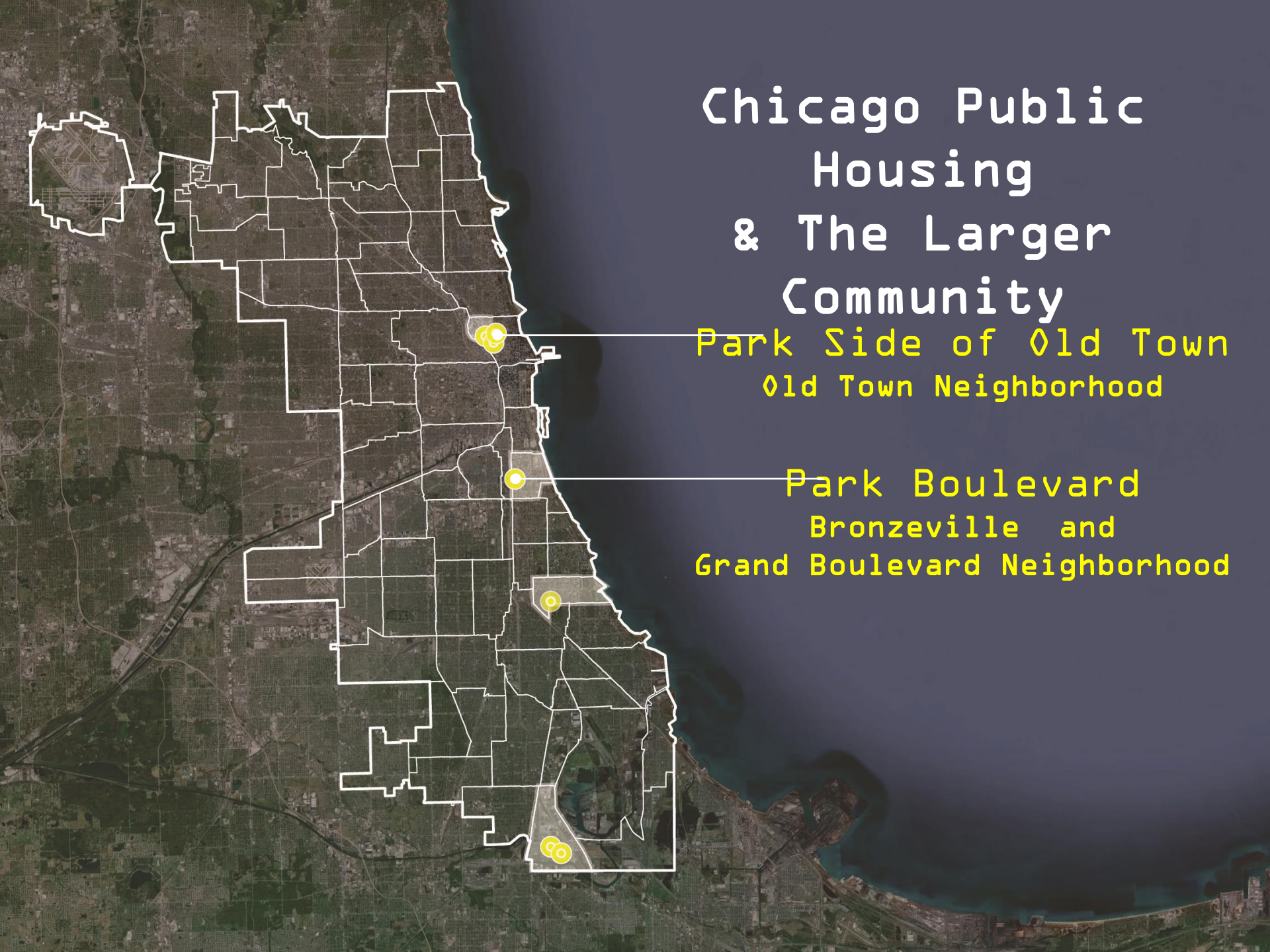




Chicago Public Housing & The Larger Community

Park Side of Old Town
Old Town Neighborhood

Park Boulevard
Bronzeville and
Grand Boulevard Neighborhood





PARK NOW AVAILABLE

PARK NOW AVAILABLE

SALES CENTER

SALES CENTER

STARBUCKS COFFEE

STARBUCKS COFFEE

JIMMY





A map of Chicago's South Side showing public housing redevelopment areas. The map features a grid of streets, with several areas highlighted in green and brown. Numbered circles (1-7) are placed over specific locations. A legend on the right lists the names and former names of these areas. The map also shows the Lake Michigan coastline and the city's boundary.

Public Housing Redevelopment Chicago's South Side

1. Park Boulevard
*formerly Stateway
Gardens*
2. Legends South
*formerly Robert
Taylor Homes*
3. Oakwood Shores
formerly Madden Wells
4. Lakefront Crescent
*formerly Lakefront
Properties*
5. Jazz on the Boulevard
6. Washington Park
under construction

An aerial photograph of Chicago, Illinois, with the city's white-outlined boundary superimposed. Numerous yellow circles of varying sizes are scattered across the city, representing the locations of various housing authorities. The circles are more densely packed in the central urban core and along the Lake Michigan shoreline. The surrounding areas, including the suburbs and the lake, are visible in the background.

The Chicago Housing Authority

Looking Back at The Plan for Transformation