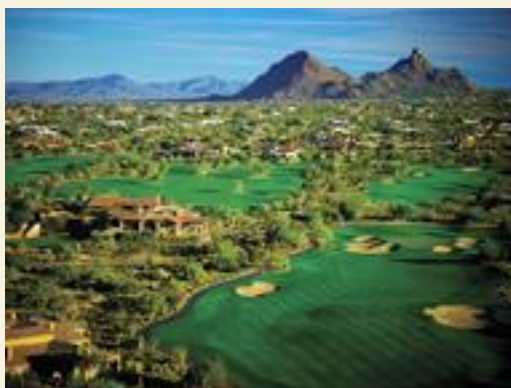


DMB Associates

ULI 2014 Spring Meeting | Vancouver, BC

April 8 - 11, 2014





History

Committed to building lasting communities that enrich quality of life today and in the future, DMB is a diversified real estate investment and development company founded in 1984. DMB's property holdings located in the Western United States include primary residential and resort/recreational communities, signature commercial and mixed used developments, and high-quality country clubs, health clubs and spas.



Our Unique Approach

DMB strives to build extraordinary communities that enrich people's lives, creating long-term value for the greater community and also our Company, partners and customers. It is DMB's commitment to community life and partnerships that distinguish our legacy, creating communities that live well and are sustainable for generations to come.

DMB

A PASSION FOR GREAT PLACES™





Resort/Recreation Communities

Kukui'ula | Kaua'i, Hawaii

Lahontan | Truckee, CA

Glenwild | Park City, Utah

Forrest Highlands | Flagstaff, AZ

Martis Camp | Truckee, CA

Planned Communities

Tejon Mountain Village | Lebec, CA

Primary Home Communities

Power Ranch | Mesa, AZ

Superstition Springs | Mesa, AZ

DC Ranch | Scottsdale, AZ

Silverleaf | Scottsdale, AZ

Verrado | Buckeye, AZ

Eastmark | Mesa, AZ

Marley Park | Surprise, AZ

One Scottsdale | Scottsdale, AZ

Santaluz | San Diego, CA

Ladera Ranch | Orange County, CA

Rancho Mission Viejo | Orange

County, CA

Commercial Properties

PROJECT	LOCATION	TOTAL
Canyon Village	Scottsdale, AZ	92,456 sf
Centerpoint on Mill	Tempe, AZ	125,943 sf
Market Street at DC Ranch	Scottsdale, AZ	241,044 sf
Eastmark	Mesa, AZ	20M sf
One Scottsdale	Scottsdale, AZ	1.8M sf
Verrado Main Street	Buckeye, AZ	60,365 sf
Shops at Kukui'ula	Poi'pu, HI	78,908 sf



Village Health Clubs & Spas

PROJECT	LOCATION	Members
The Village Racquet & Health Club	Phoenix, AZ	8,227
Gainey Village Health Club & Spa	Scottsdale, AZ	3,976
DC Ranch Village Health Club & Spa	Scottsdale, AZ	4,484



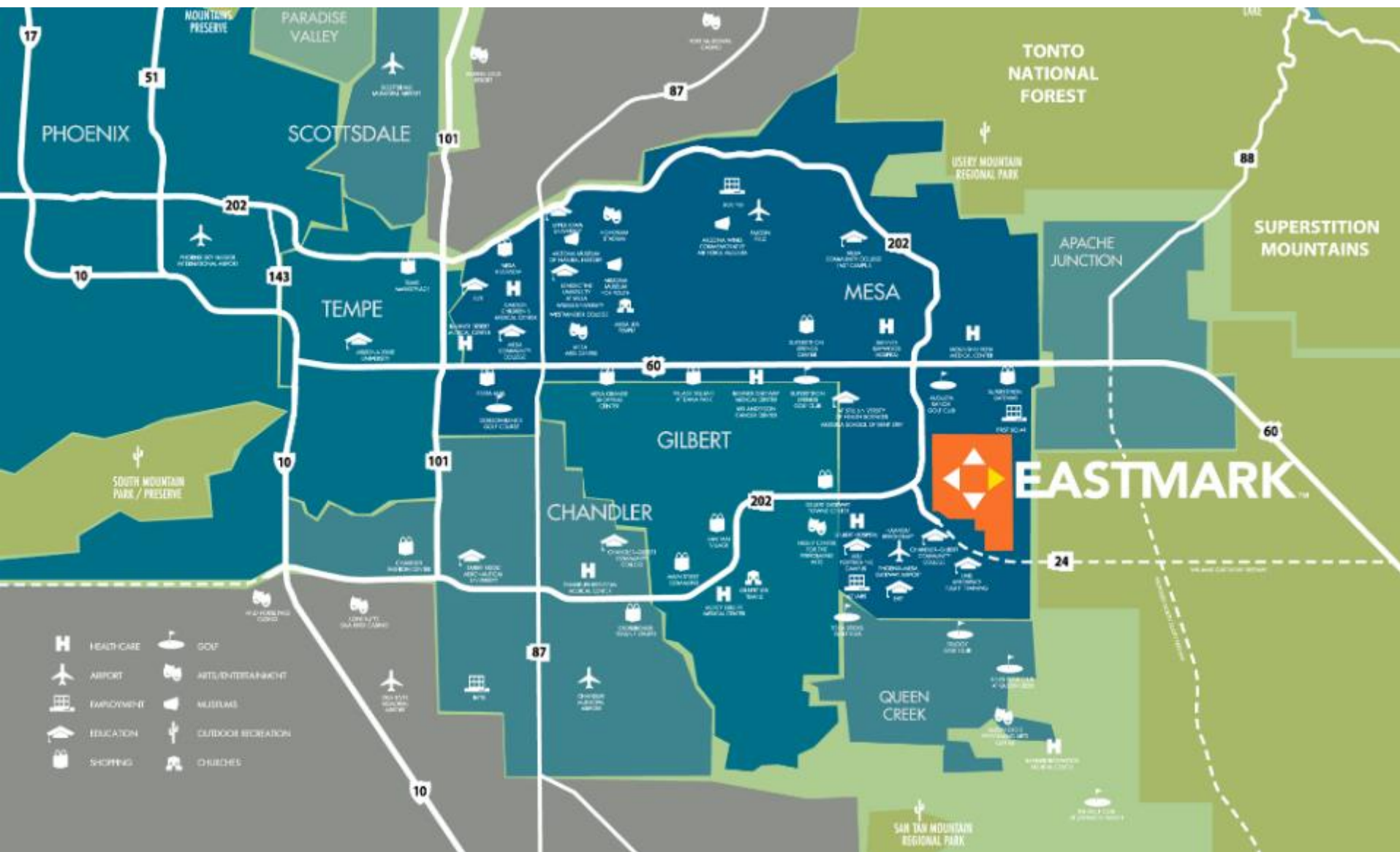
EASTMARK™

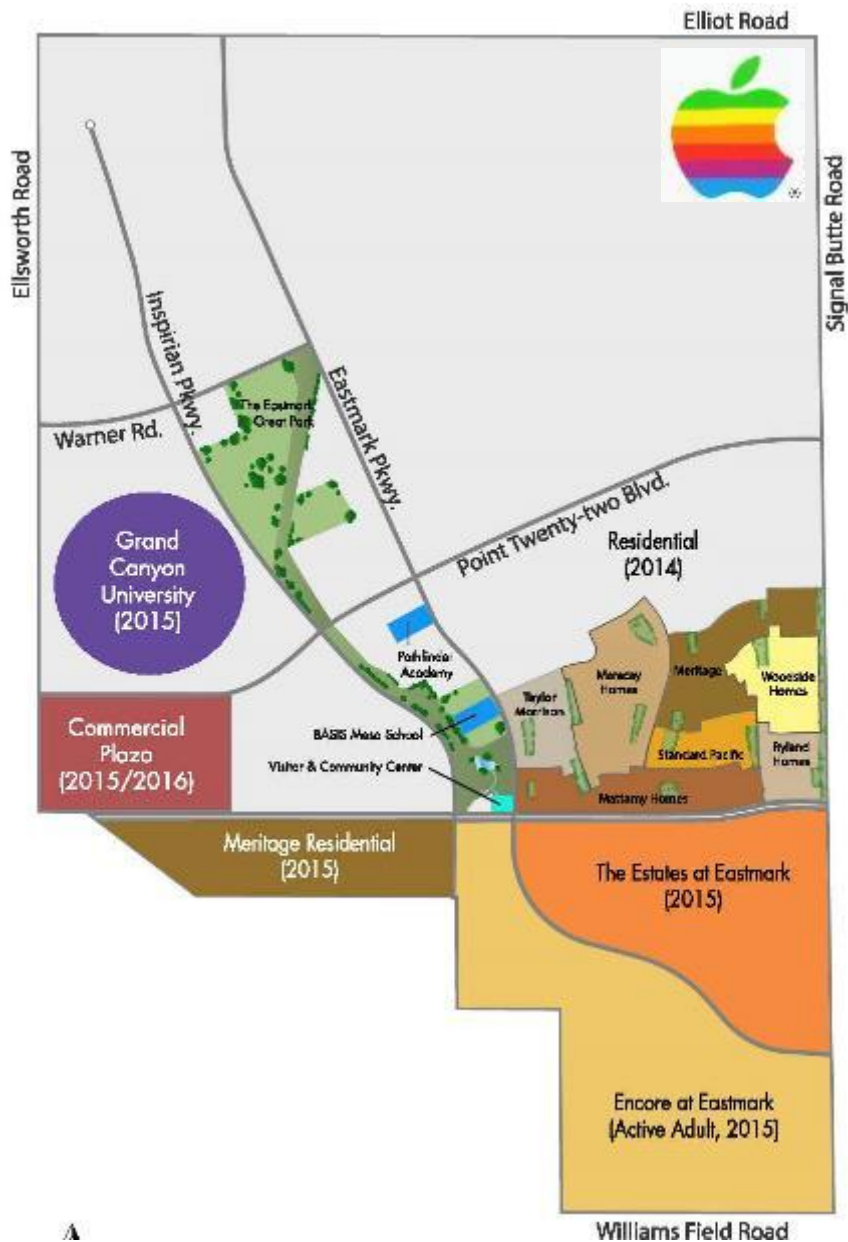
The heart & hub of the East Valley.



- Mesa, AZ
- 3,200 acres
- Located adjacent to Phoenix-Mesa Gateway Airport
- ASU Polytechnic campus.
- Entitled for up to 15,000 residential units and 20 million square feet of commercial development including up to 6,000 hotel rooms
- Home to Grand Canyon University
- Home to Apple's Sapphire manufacturing facility





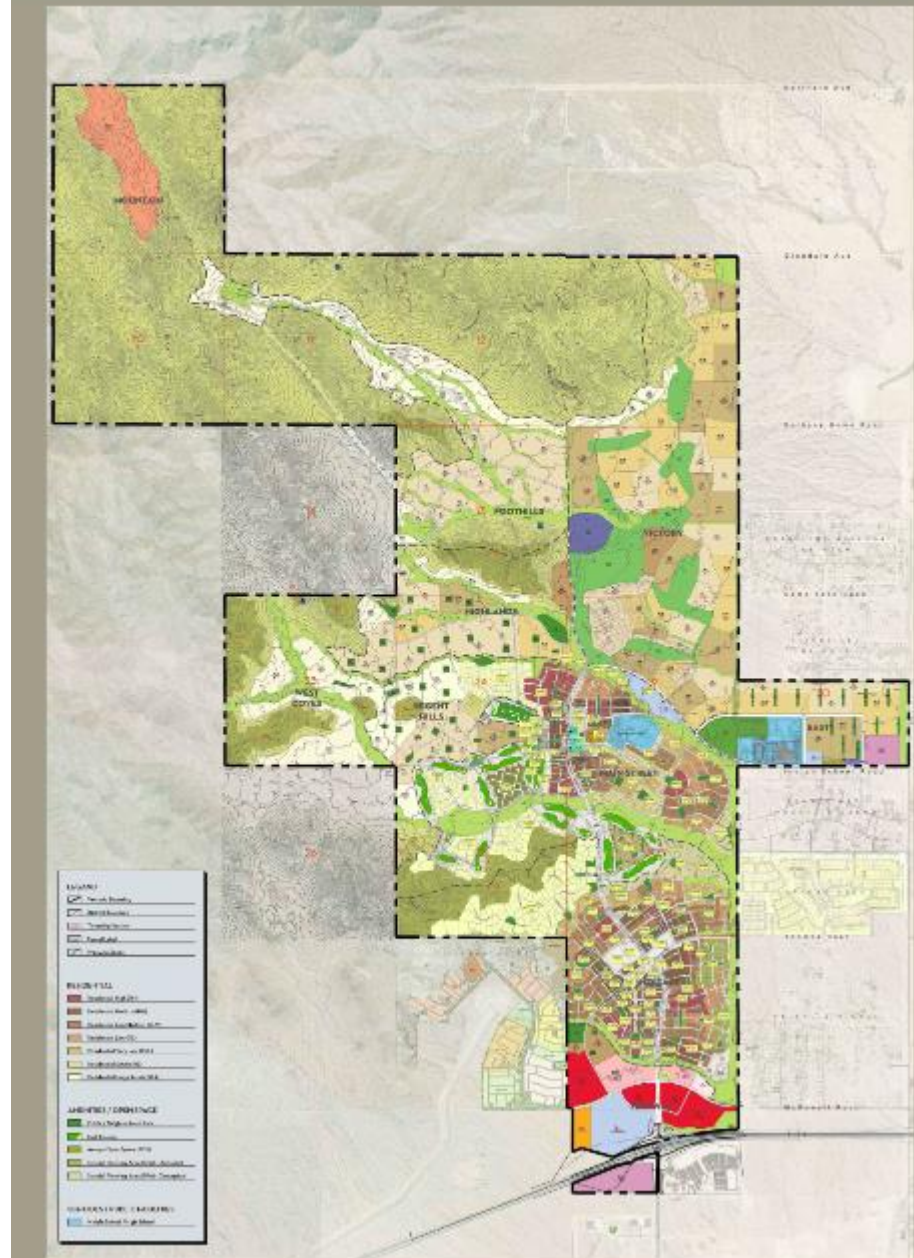


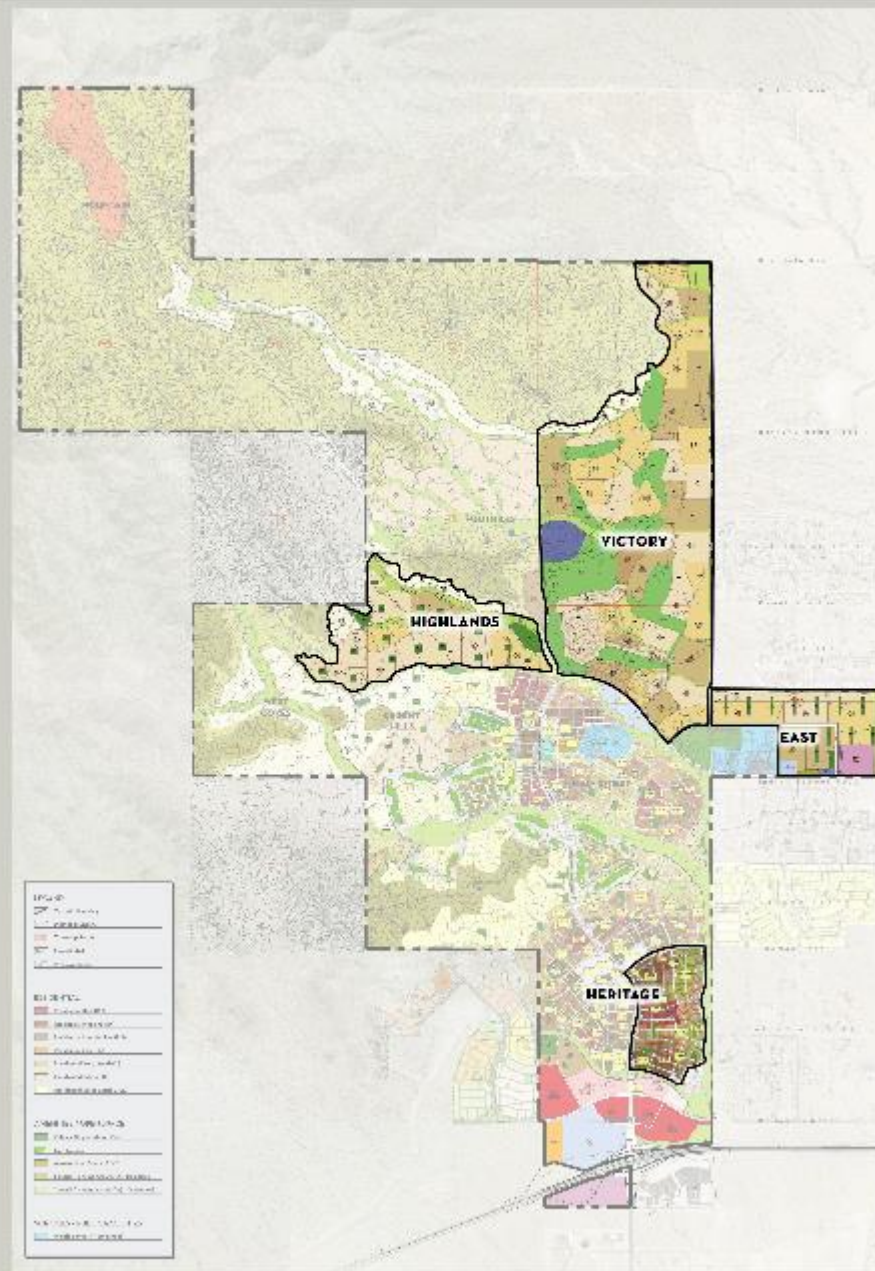




Master Site Plan

- 8,800 Total Acres
- 2500 Homes Sold
- Entitled for 11,500 additional homes







Victory
District™



**Victory
District**



Find a Home

Victory

Around Town

Life at Verrado

What's Happening



VICTORY IS COMING.



Get ready for January 2015.



Explore Verrado



Find a Home



What's Happening



We're serving up a whole new way to live. If you're not yet 55, you'll wish you were, because Victory will be like nothing you've ever seen. Completely new home styles, and so many great things to see and do. Best of all, we're part of the vibrant community of Verrado. Register at verrado.com for more info as our story unfolds. Just wait 'til you see what's coming—you'll be hungry for more.



Victory District™

COMPLETELY NEW HOMES FROM THE \$200s to \$500s | COMING JANUARY 2015 | [VERRADO.COM/VICTORY](http://verrado.com/victory)

All listed information is based on 30 days of open house. A limited number of homes may be shown on a limited basis. Homes are subject to change without notice. Not all homes are available. Please call for more information. © 2014 Verrado. All rights reserved.

A Future is
Clear Future

