



RECOVERY ————— TO ————— RESILIENCY

NYCHA'S HURRICANE SANDY RECOVERY PROGRAM



An aerial photograph of a city skyline, likely New York City, with various skyscrapers and buildings. The image is overlaid with a semi-transparent green filter. Three horizontal bars of different shades of green are positioned across the center of the image, containing white text.

ABOUT NYCHA

PROTECTING PEOPLE & PROPERTY

CASE STUDY: RED HOOK

NYCHA SERVES
1 IN EVERY 14
NEW YORKERS



WITH **MORE THAN 607,000***
PEOPLE, NYCHA'S POPULATION IS
LARGER THAN LAS VEGAS, ATLANTA,
OR MIAMI

*NUMBER SERVED BY NYCHA'S PUBLIC HOUSING AND SECTION 8 PROGRAMS

NYCHA RESIDENTS BY THE NUMBERS



77,000
SENIORS

62 YEARS OLD OR OLDER



110,000
CHILDREN

UNDER 18 YEARS OLD



40%

OF HEADS OF HOUSEHOLDS
ARE 62 YEARS OLD OR OLDER



25%

OF NYCHA EMPLOYEES
ARE RESIDENTS OF
PUBLIC HOUSING



\$23,000

AVERAGE
HOUSEHOLD
INCOME



61%

ARE EMPLOYED
(OF NON-DISABLED,
WORKING AGE ADULTS)



41%

ON FIXED INCOME
(SOC. SEC., SSI, PENSION, OTHER)



12%

RECEIVE PUBLIC
ASSISTANCE

FUND GOAL: CHANGE THE WAY NYCHA IS FUNDED

PAY LESS TO NYC

DO A BETTER JOB
COLLECTING RENT AND FEES

MAKE WISER USE
OF GROUND FLOOR SPACE

REDUCE CENTRAL
OFFICE COSTS



OPERATE GOAL: CHANGE THE WAY NYCHA OPERATES

GO DIGITAL AND USE TECH TO UPGRADE SERVICE

LOCALIZE DECISION-MAKING
TO HEIGHTEN CUSTOMERS' SATISFACTION

PURSUE SUSTAINABILITY FOR A CLEANER
AND GREENER NYCHA

IMPROVE SAFETY AND SECURITY



OUR VISION FOR NEXTGENERATION NYCHA

SAFE, CLEAN, AND CONNECTED COMMUNITIES



(RE)BUILD GOAL: CHANGE HOW NYCHA LOOKS

USE DATA TO DRIVE CAPITAL DECISIONS

PROVIDE LAND FOR NYC'S AFFORDABLE HOUSING GOALS

MAXIMIZE FEDERAL PROGRAMS TO RENOVATE
AND PRESERVE BUILDINGS

CHOOSE AND USE GOOD DESIGN

ENGAGE GOAL: CHANGE HOW NYCHA ENGAGES WITH RESIDENTS

IMPROVE RESIDENT AND COMMUNITY SERVICES
WITH A NEW TYPE OF ENGAGEMENT

CREATE A NONPROFIT ORGANIZATION
TO FUND SOCIAL SERVICES

CONNECT RESIDENTS TO QUALITY JOB OPPORTUNITIES

An aerial photograph of a city skyline, likely New York City, with numerous high-rise buildings. A semi-transparent green rectangular overlay covers the middle portion of the image, serving as a background for the text.

ABOUT NYCHA

PROTECTING PEOPLE & PROPERTY

CASE STUDY: RED HOOK

DEVELOPMENTS DAMAGED BY HURRICANE SANDY





33 sites

3 boroughs

15 neighborhoods

60,000 residents

**NYCHA'S RECOVERY COSTS AND
RESILIENCE INVESTMENTS ARE
ESTIMATED TO BE OVER \$3 BILLION.**

CURRENT STATUS - CONSTRUCTION

Interactive Sandy Transparency Map

NYCHA Sandy Recovery Website

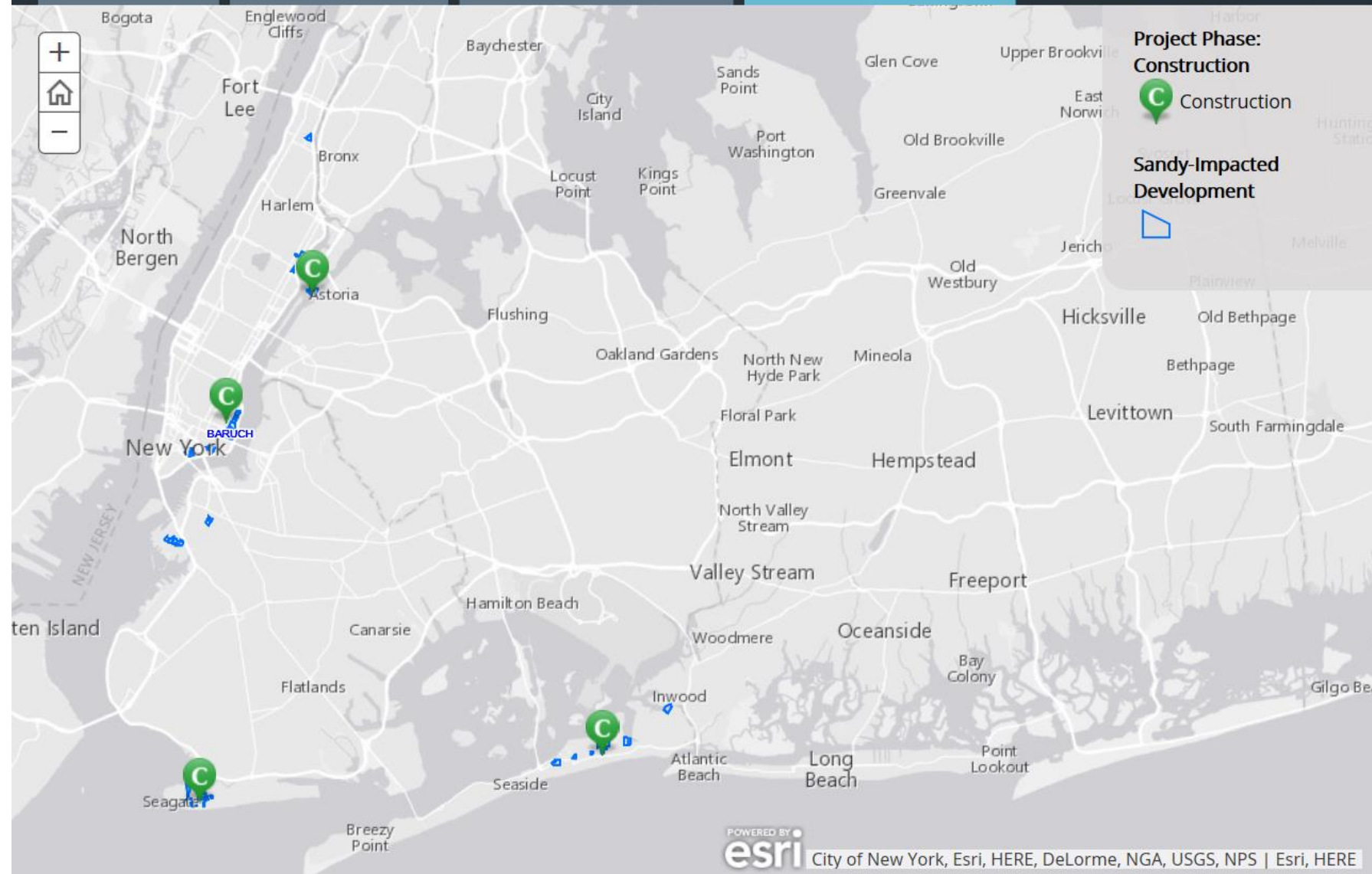


Project Phase: All

Project Phase: Design

Project Phase: Procurement

Project Phase: Construction



CURRENT STATUS - PROCUREMENT

Interactive Sandy Transparency Map

NYCHA Sandy Recovery Website

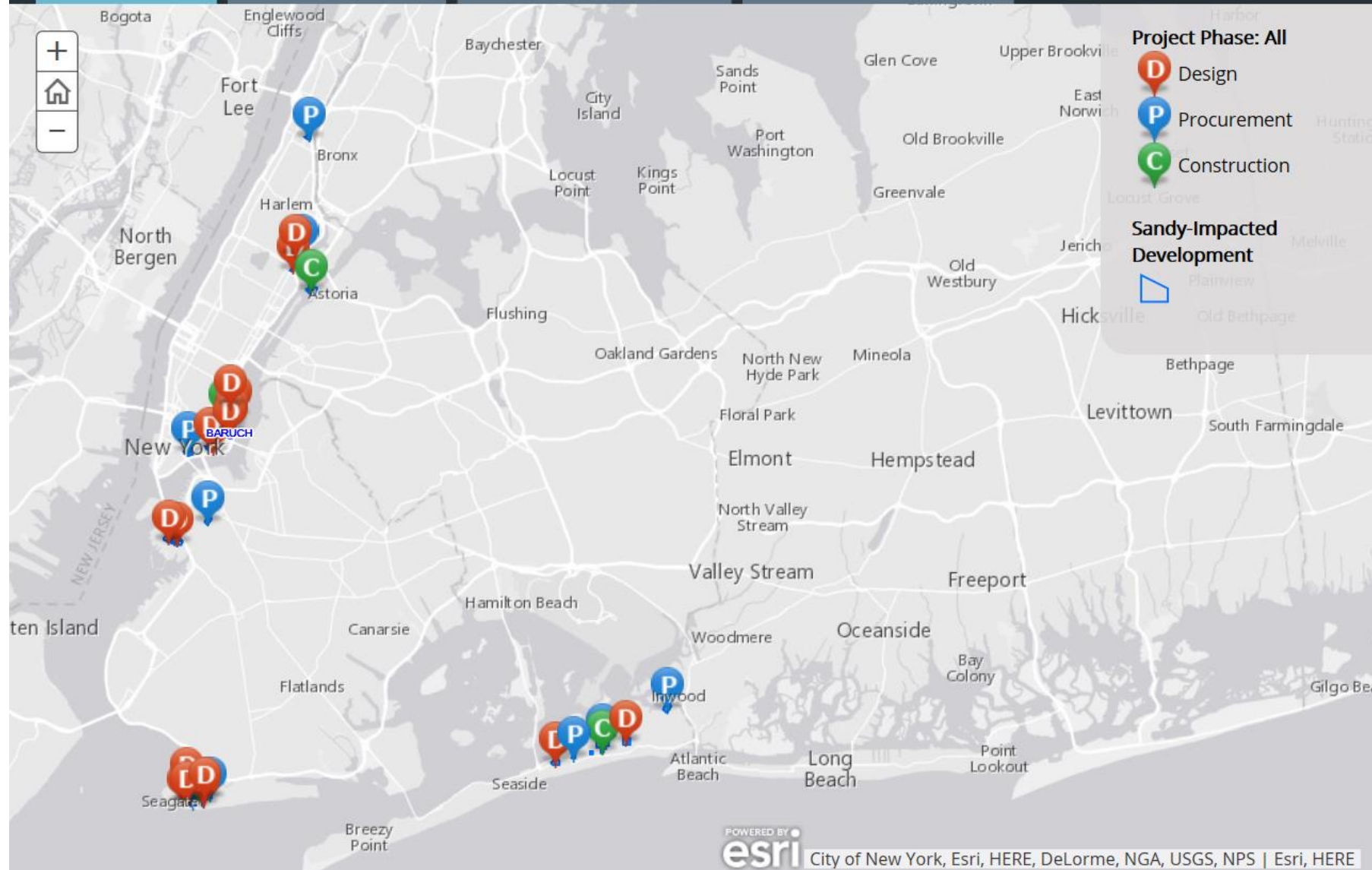


Project Phase: All

Project Phase: Design

Project Phase: Procurement

Project Phase: Construction



PROTECTING PEOPLE AND PROPERTY

THE DAMAGE HURRICANE SANDY INFLICTED HAS A SILVER LINING: IT PROVIDES NYCHA WITH THE OPPORTUNITY TO REBUILD BETTER AND SMARTER, IMPROVING STRUCTURAL RESILIENCY TO PROTECT RESIDENTS FROM FUTURE DISASTERS AND CLIMATE CHANGE.



1

**BUILDING
REINFORCEMENT**

2

**SURGE
PROTECTION**

3

**INFRASTRUCTURE
UPGRADES**

PROTECTING PEOPLE & PROPERTY

BUILDING REINFORCEMENT

1

WHAT IS IT ? In building reinforcement, existing structures are retrofitted so they are less susceptible to extreme hot and cold temperatures, high winds and flooding.

WHY IS IT IMPORTANT? Imperative that NYCHA build back in a way so that its structures can better withstand future storm events.

HOW IS IT ACHIEVED? Using a variety of strategies to make its buildings more resistant to storm-related damage.



PROTECTING PEOPLE & PROPERTY

SURGE PROTECTION

2

WHAT IS IT ? Storm surge is the abnormal rise in coastal water level above the regular tide caused by a severe storm such as a hurricane or nor'easter.

WHY IS IT IMPORTANT? Surge poses a threat to everything in its path: trees, vehicles, equipment, playgrounds, site lighting, buildings and lives.

HOW IS IT ACHIEVED? Site-wide surge protection can only be accomplished through the use of defensive perimeter barriers.



PROTECTING PEOPLE & PROPERTY

INFRASTRUCTURE UPGRADES

3

WHAT IS IT ? Infrastructure upgrades improve the physical components of systems providing essential services to buildings and residents.

WHY IS IT IMPORTANT? Infrastructure upgrades will allow NYCHA buildings and sites to function better for residents.

HOW IS IT ACHIEVED? NYCHA is repairing or replacing vital infrastructure elements at each site.



PROTECTING PEOPLE & PROPERTY

INNOVATIVE DESIGN



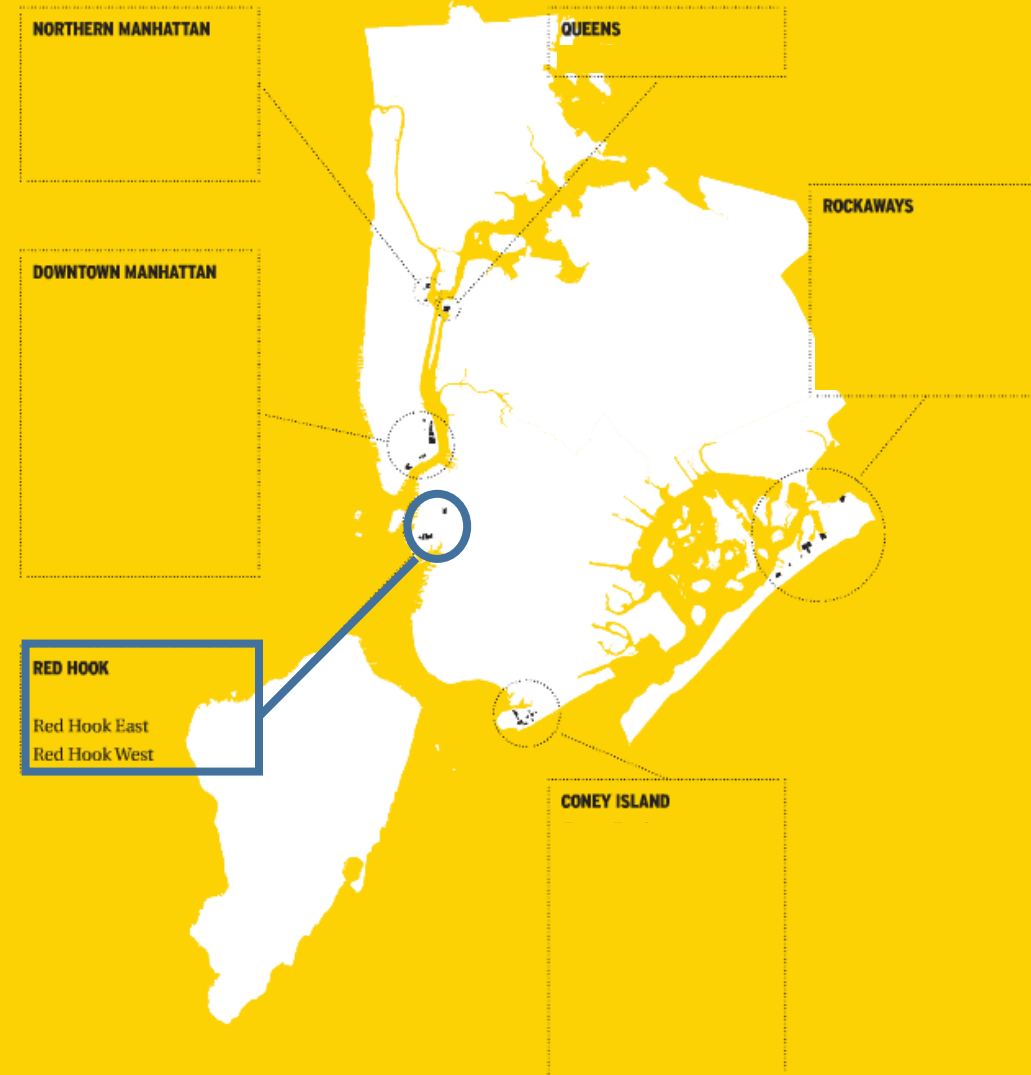
An aerial photograph of a city skyline, likely New York City, with numerous high-rise buildings. The image is overlaid with a semi-transparent green band across the middle and a solid green band at the bottom. The text is centered within these bands.

ABOUT NYCHA

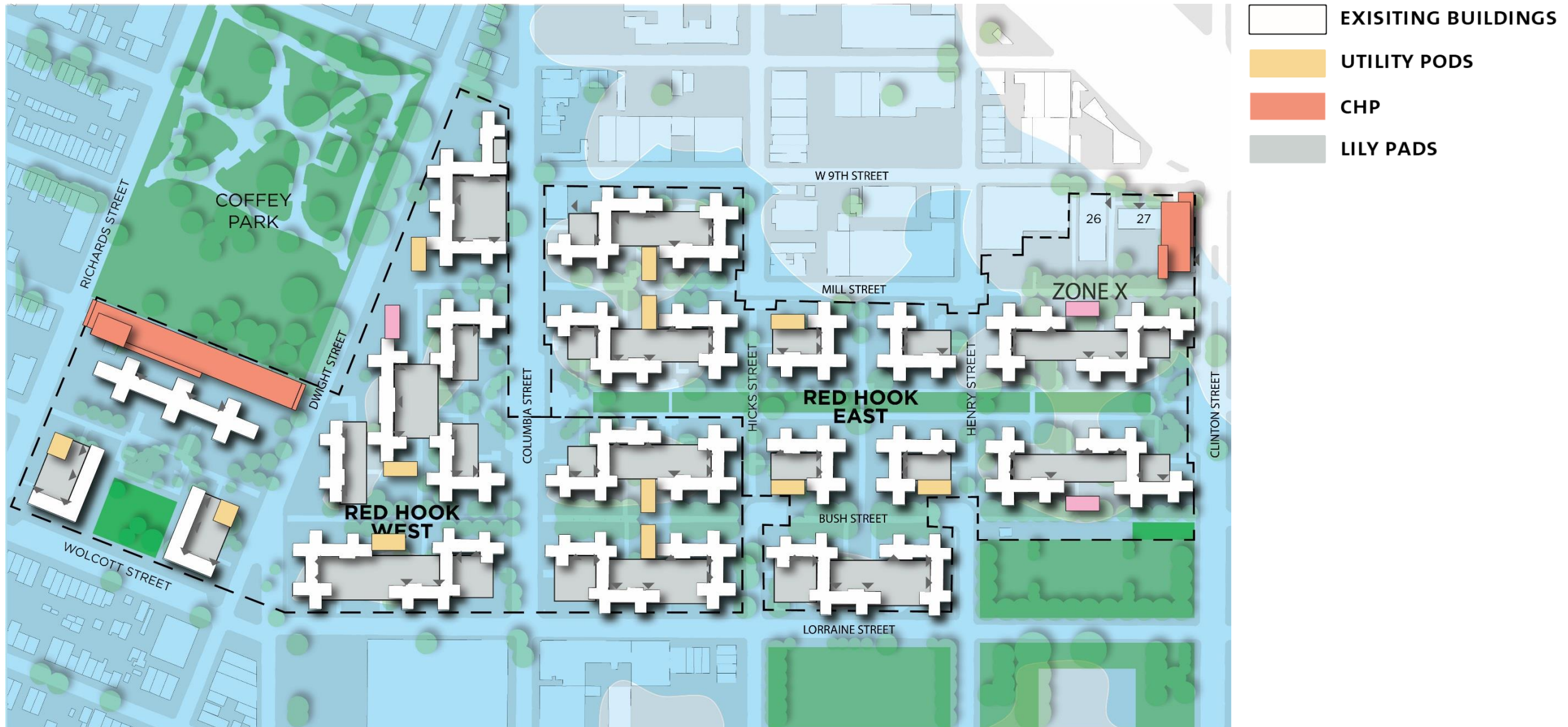
PROTECTING PEOPLE & PROPERTY

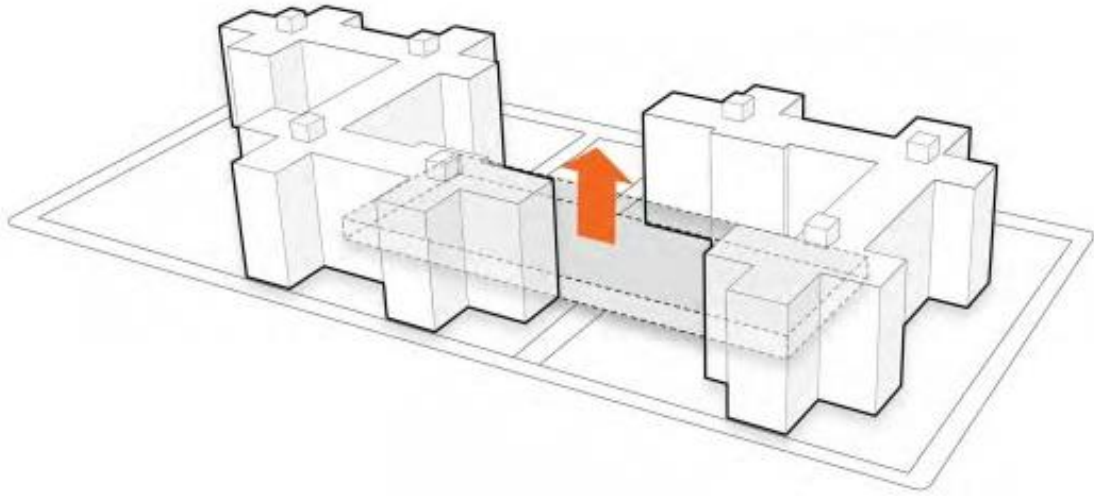
CASE STUDY: RED HOOK

DEVELOPMENTS DAMAGED BY HURRICANE SANDY

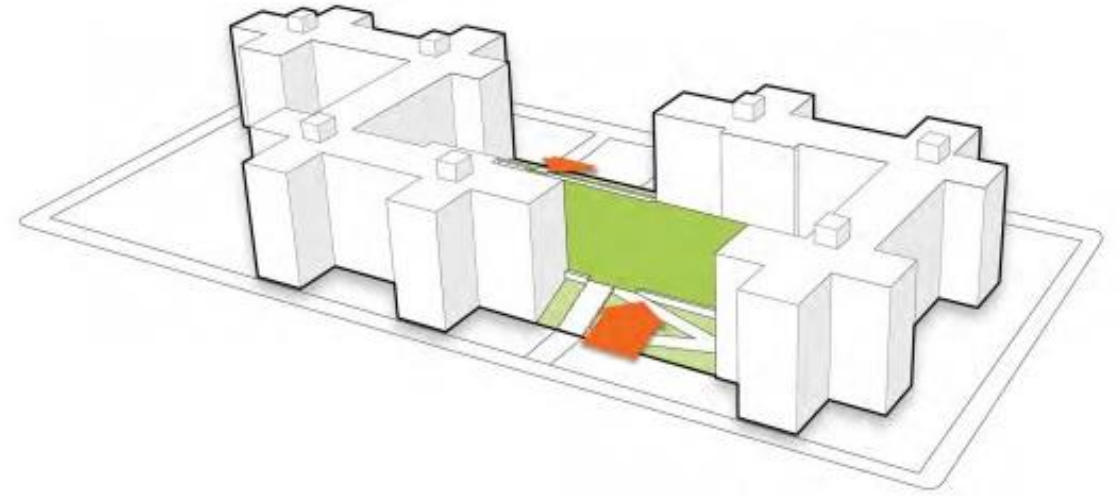


CASE STUDY: RED HOOK

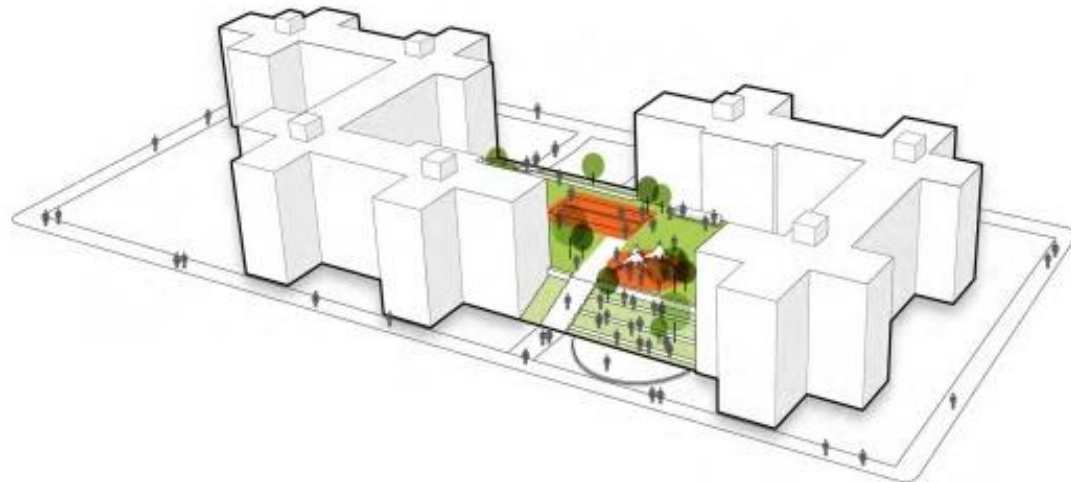




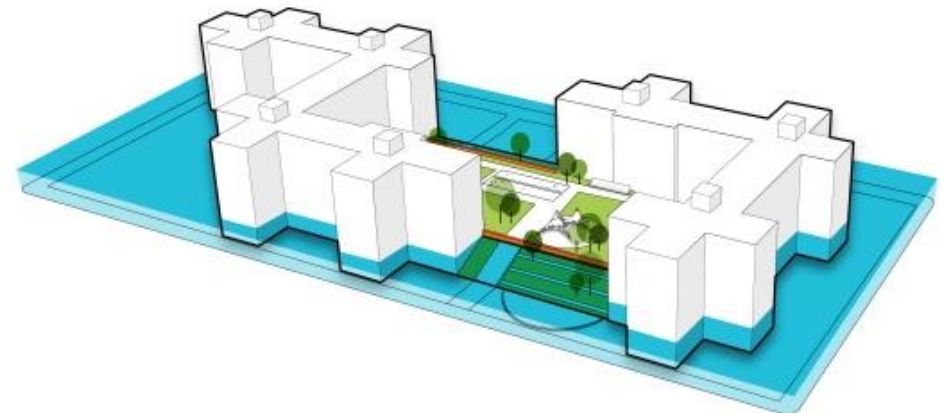
1 - Earth is lifted to median FFE height



2 - 5% slopes provide barrier free access

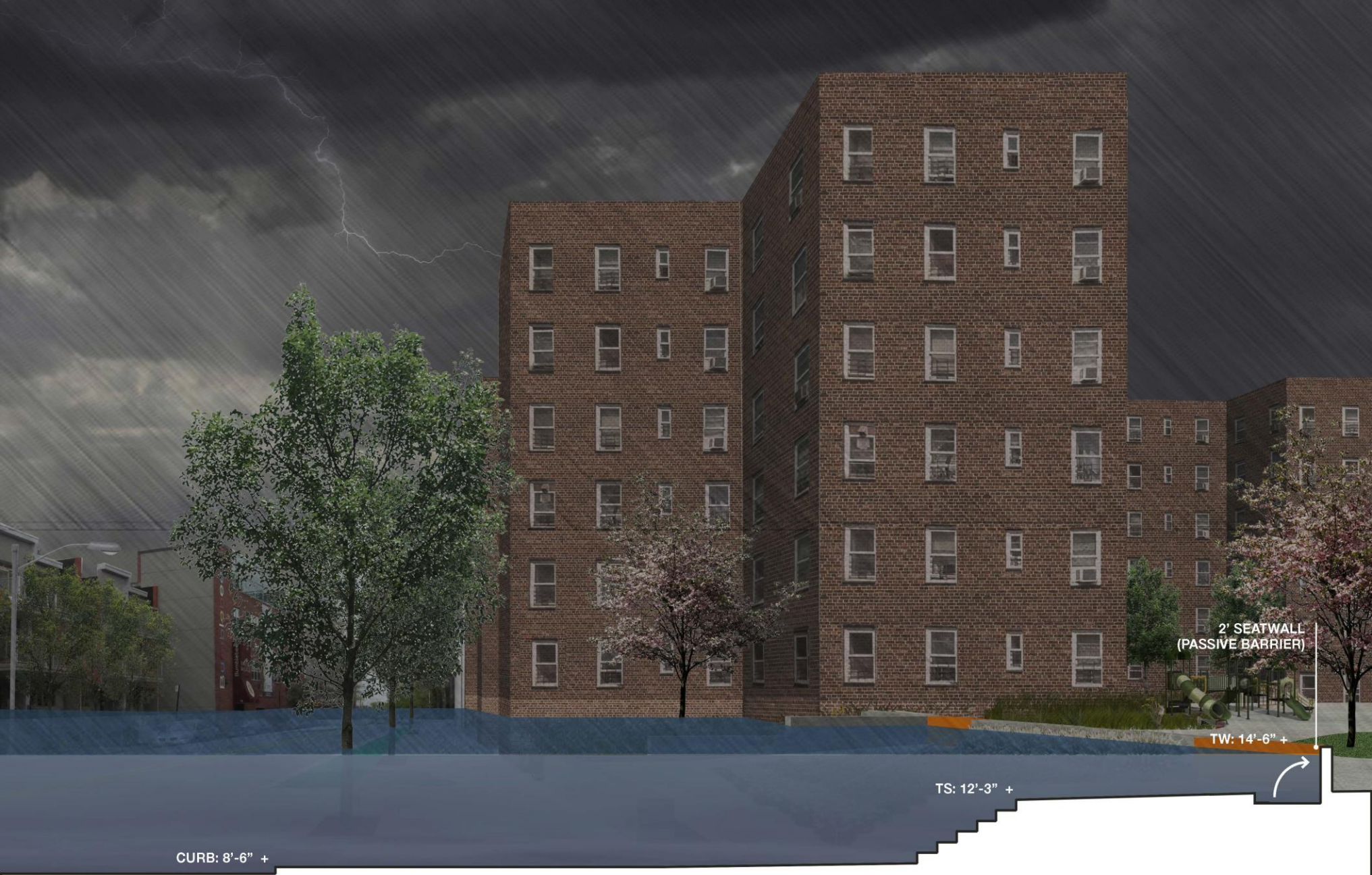


3 – Surface programmed for residents

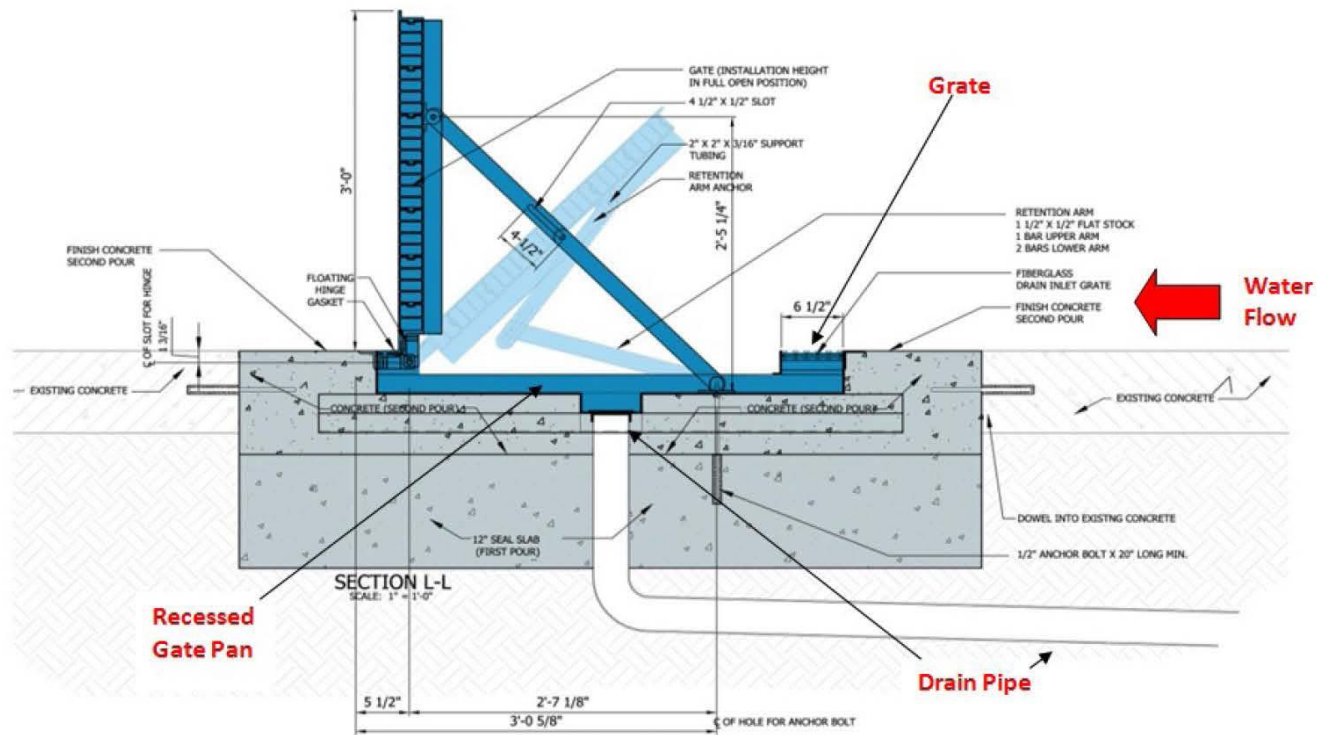


4 – Passive barriers deployed in floods





PASSIVE FLOOD BARRIERS



CENTER MALL (CONCEPTUAL)



CENTER MALL (CONCEPTUAL)



MEP PLANT (CONCEPTUAL)



MEP PLANT (CONCEPTUAL)





RECOVERY ————— TO ————— RESILIENCY

NYCHA'S HURRICANE SANDY RECOVERY PROGRAM

