



ARNO MATIS ARCHITECTURE



PHOTO CREDIT: MAXIM SHIPENKOV/EUROPEAN PRESSPHOTO AGENCY



PHOTO CREDIT: BRENDAN HOFFMAN (GETTY)



INDEPENDENCE SQUARE, KIEV

“There is no logic that can be superimposed on the city; people make it, and it is to them, not buildings, that we must fit our plans.”

-Jane Jacobs



MACRO SCALE:

BUILDING COMMUNITY

A VANCOUVER PERSPECTIVE







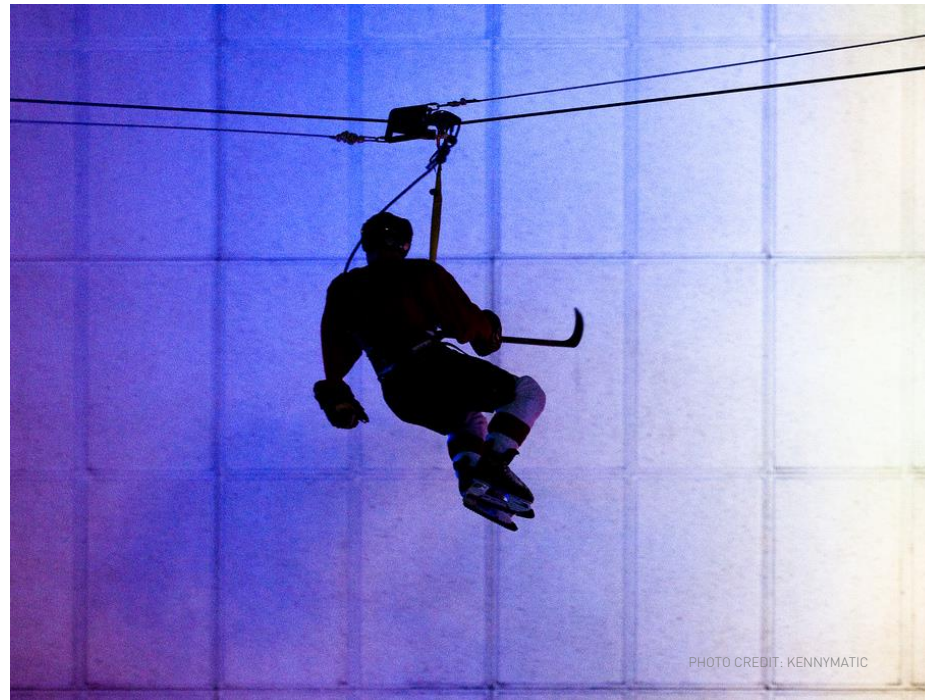
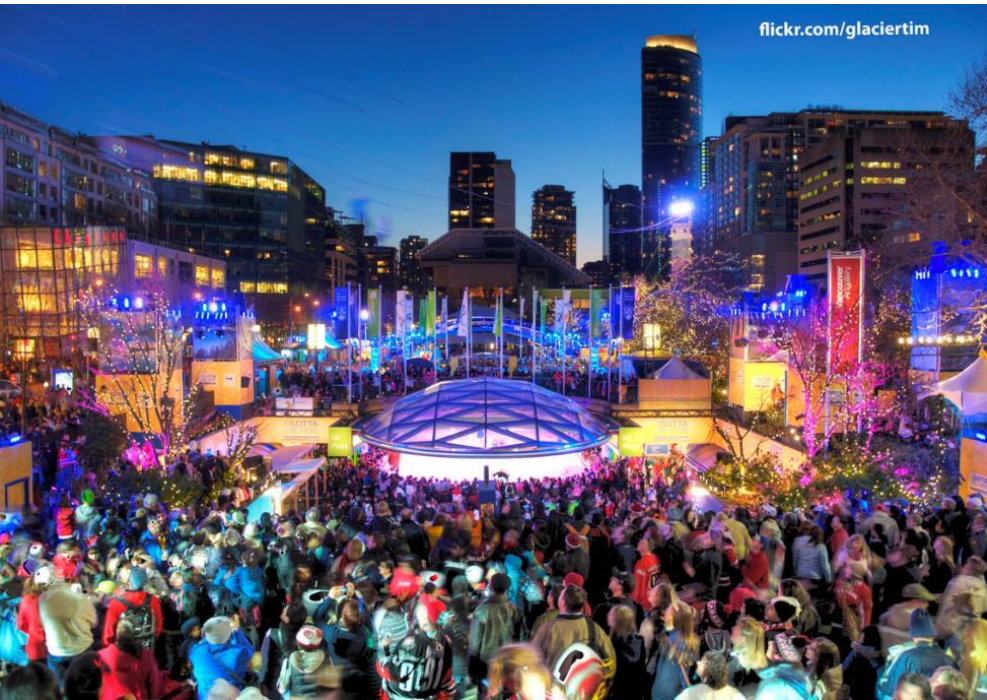
SOURCE: VANCOUVER.CA











PROJECT BY:
JAMES CHENG ARCHITECTS





Source: Surrey.ca



Courtesy of
BING THOM ARCHITECTS



Courtesy of
BING THOM ARCHITECTS



Courtesy of
BING THOM ARCHITECTS





Courtesy of BING THOM ARCHITECTS



SOURCE: SURREY.CA





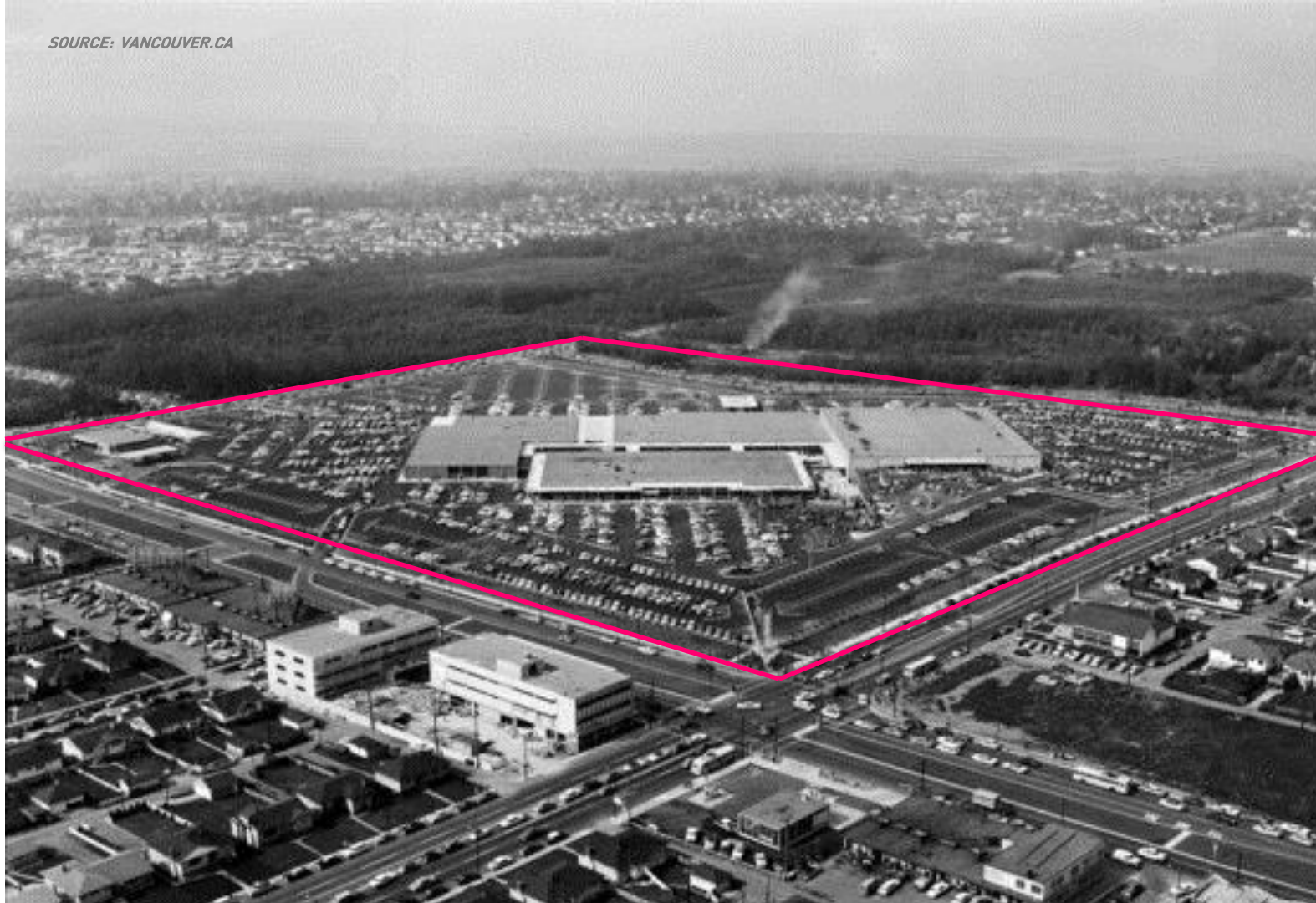
SOURCE: SURREY.CA



SOURCE: SURREY.CA



SOURCE: VANCOUVER.CA



SOURCE: VANCOUVER.CA

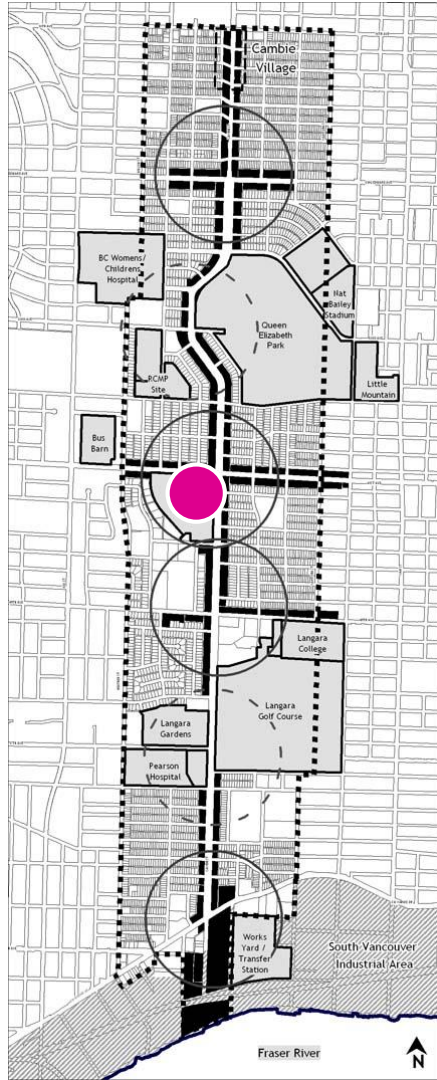
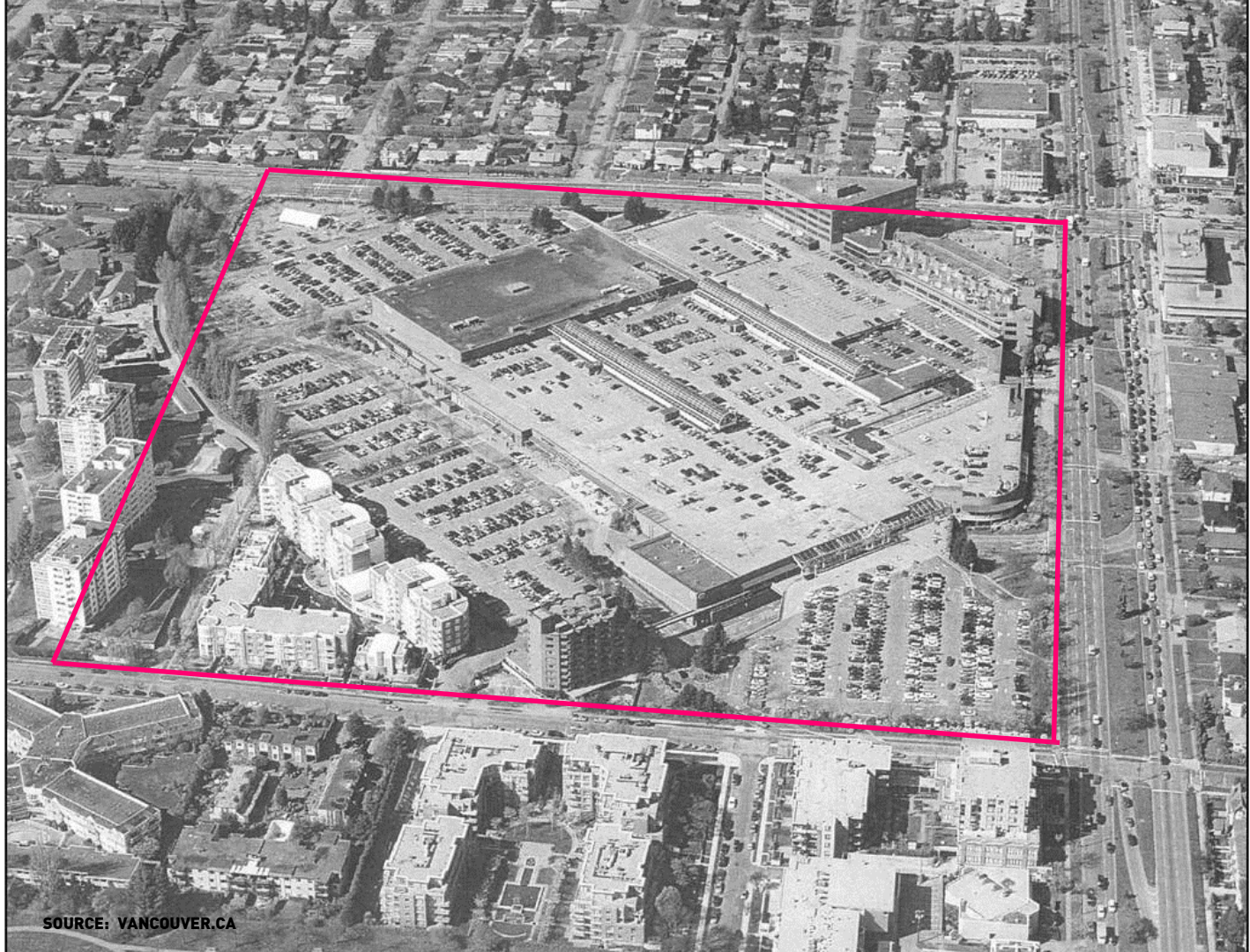


PHOTO CREDIT: TINKER SAILOR SOLDIER SPY



SOURCE: VANCOUVER.CA

Project Team:
PFS, STANTEC,
GENSLER,
WESTBANK
HENRIQUEZ
PARTNERS



Public Realm

Courtesy of
PHILLIPS
FAREVAAG
SMALLENBERG

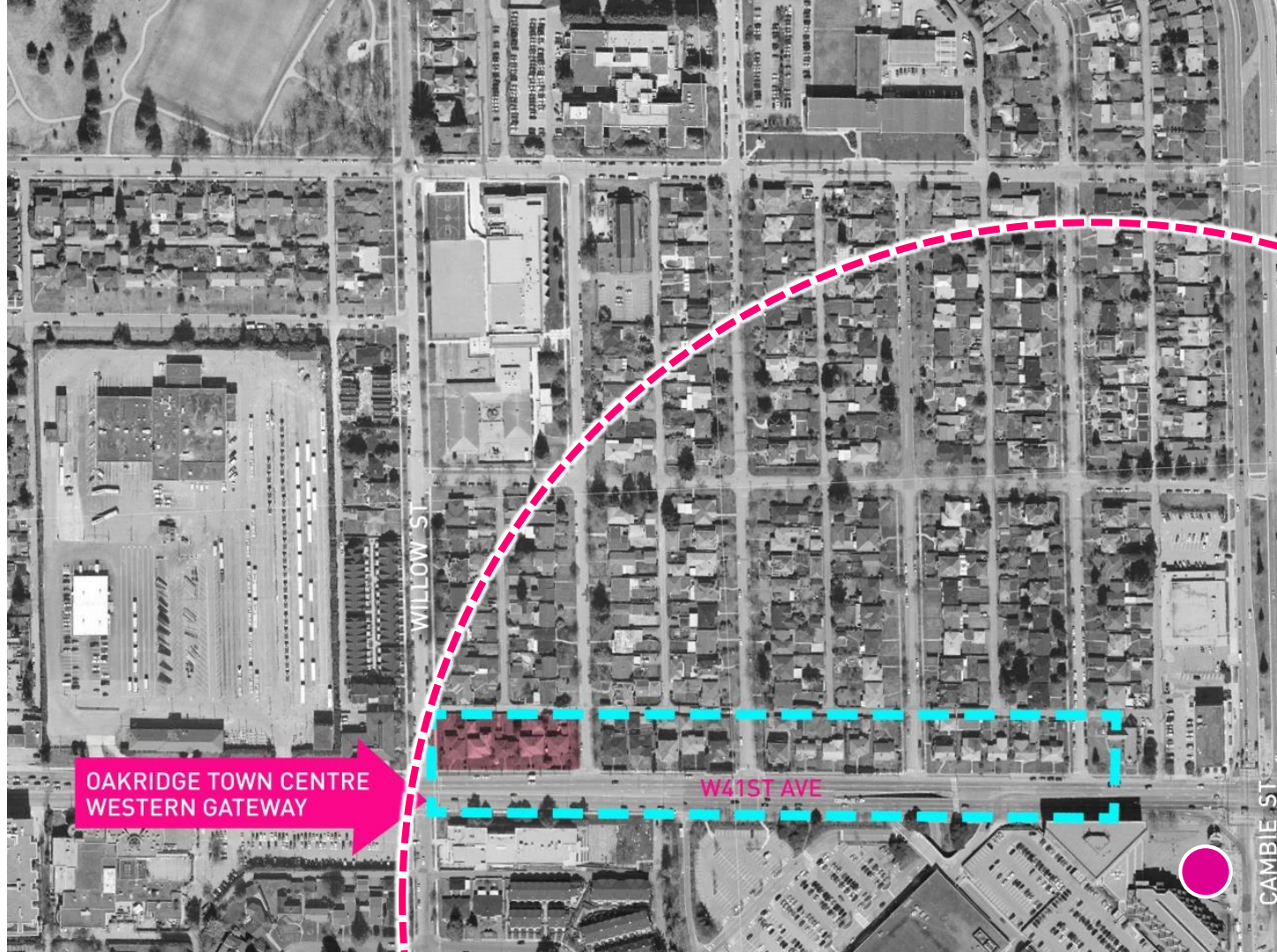
 **Elevated Community Commons**
 **Ground Level Public Space**



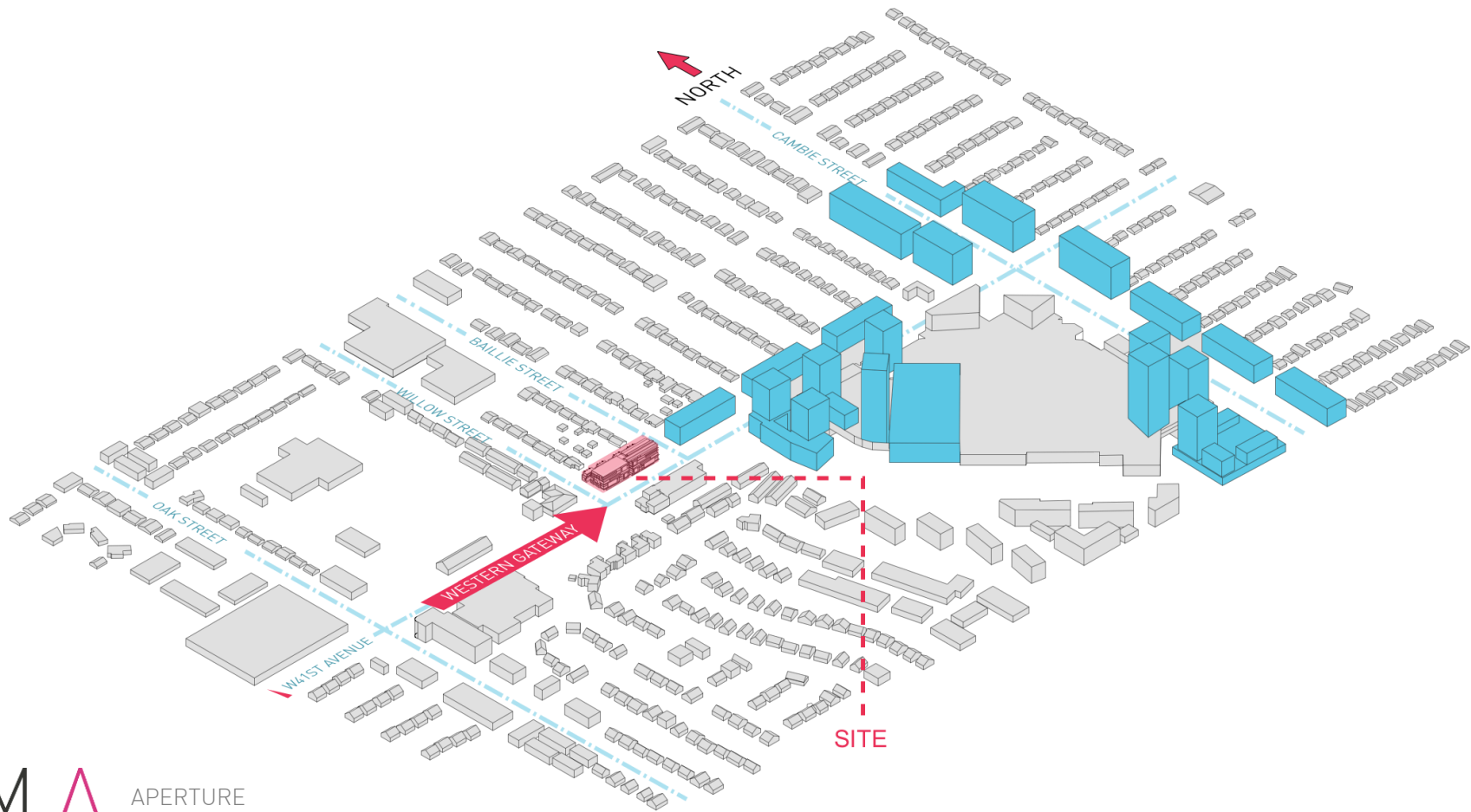
MICRO SCALE:

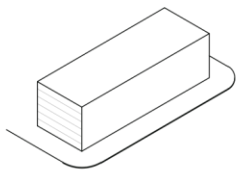
INCREASING ASSET VALUE



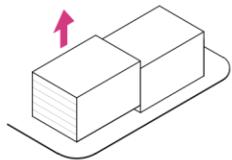




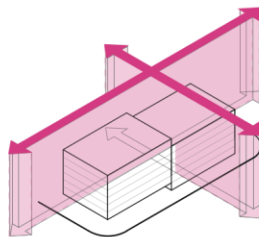




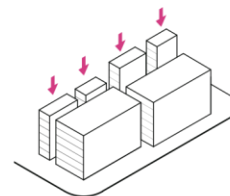
ALLOWABLE SITE MASSING



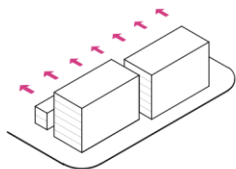
SPLIT TO ADJUST TO GRADE



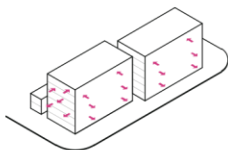
ESTABLISH COURTYARD AXES
TO ALLOW LIGHT PENITRATION



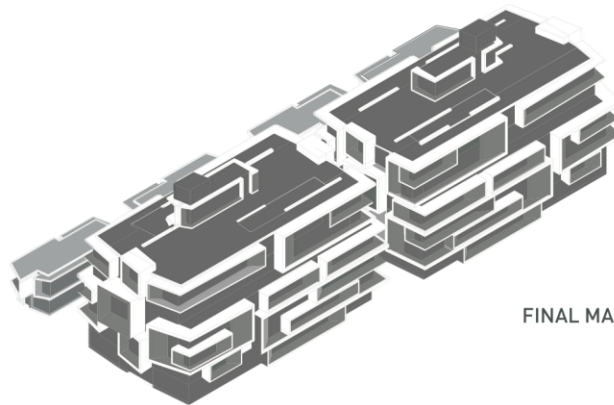
LOWER VILLA UNITS TO REDUCING SHADOWS
ON SINGLE-FAMILY HOMES TO THE NORTH



LOWERING CREATES
VIEWS OVER TO NORTH

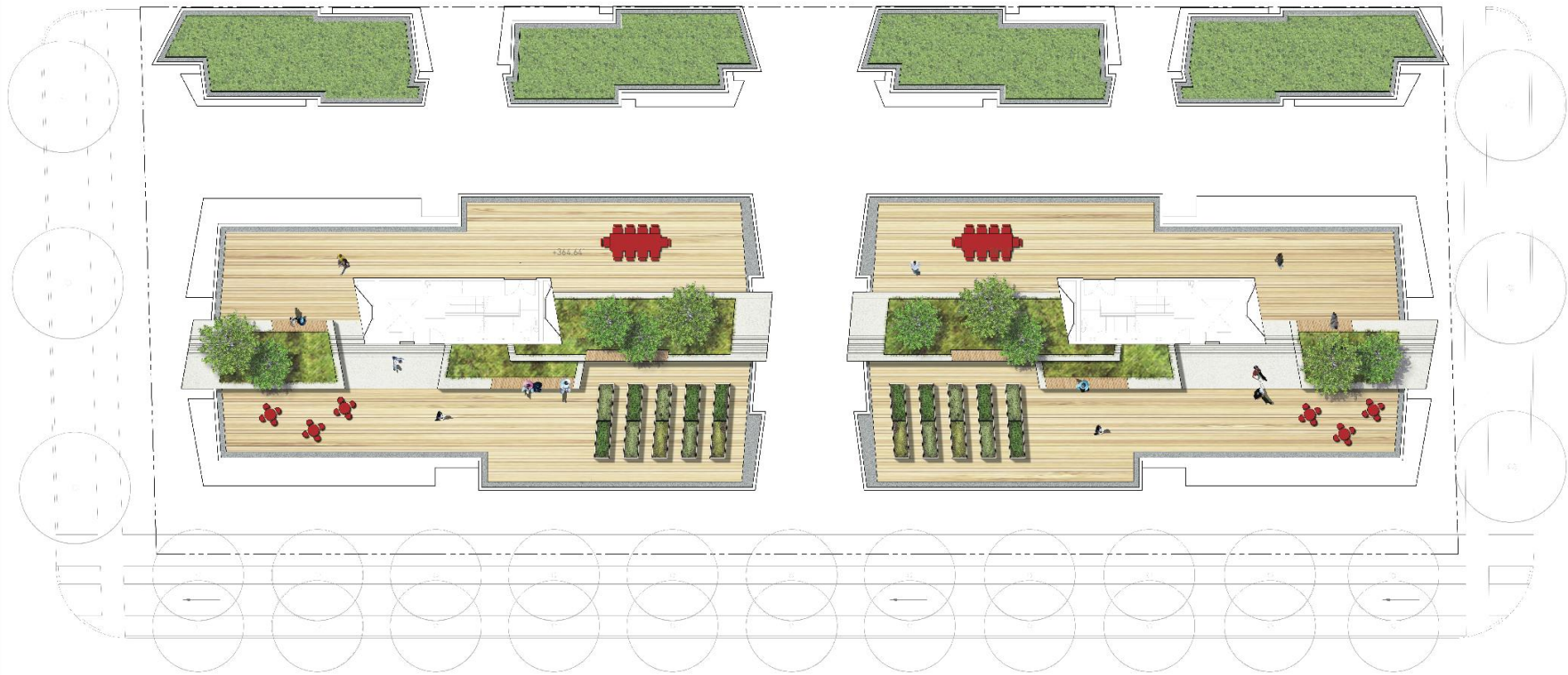


'APERTURE' FRAMES FRAGMENT
MASSING, RESPOND TO SOLAR
ORIENTATION



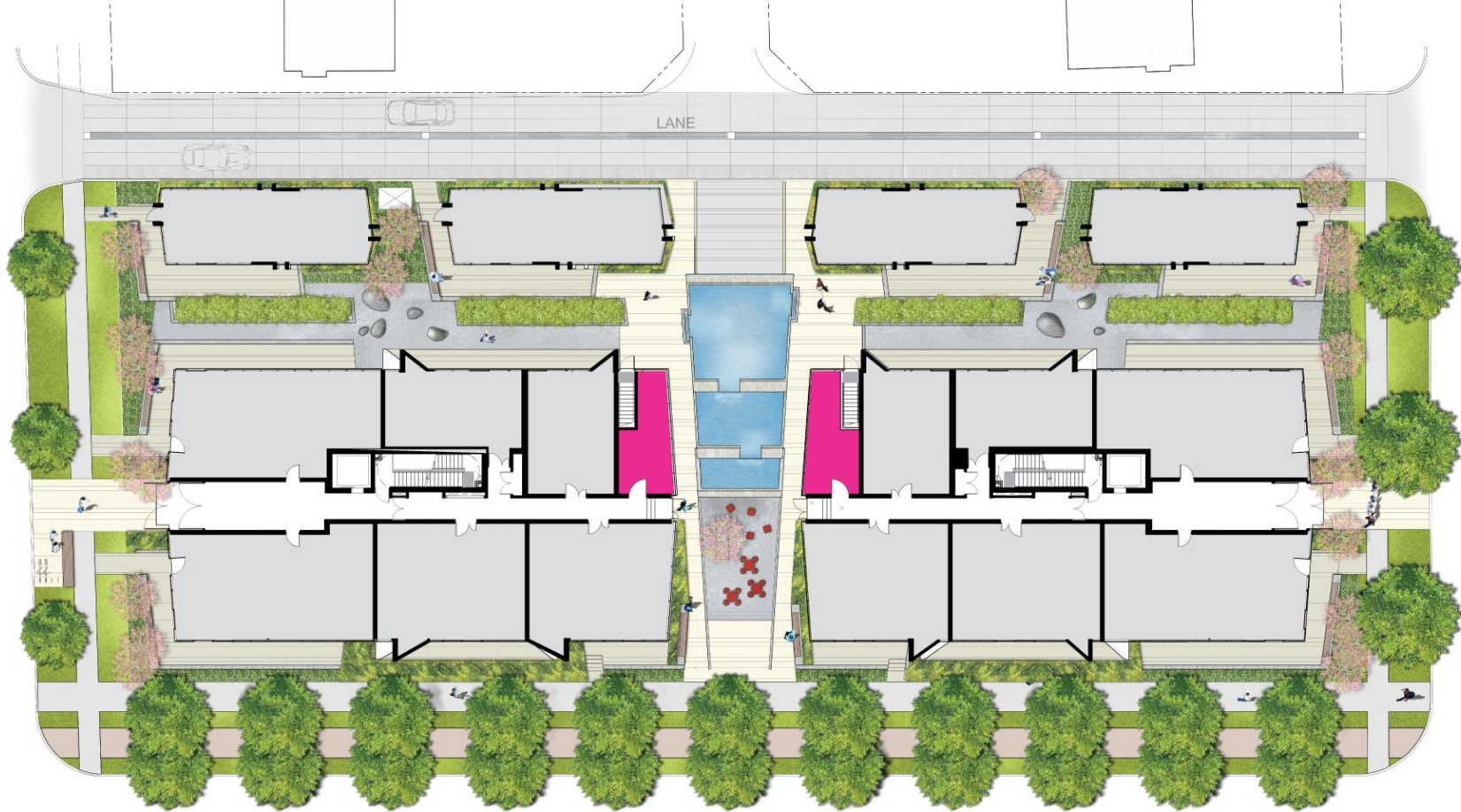
FINAL MASSING CONCEPT








SOURCE: CHICAGO CHICKEN – CRFS PROJECT





The architectural language is inspired by imagery of
stacked timbers which fragment density while providing
an **incredibly efficient floorplate**

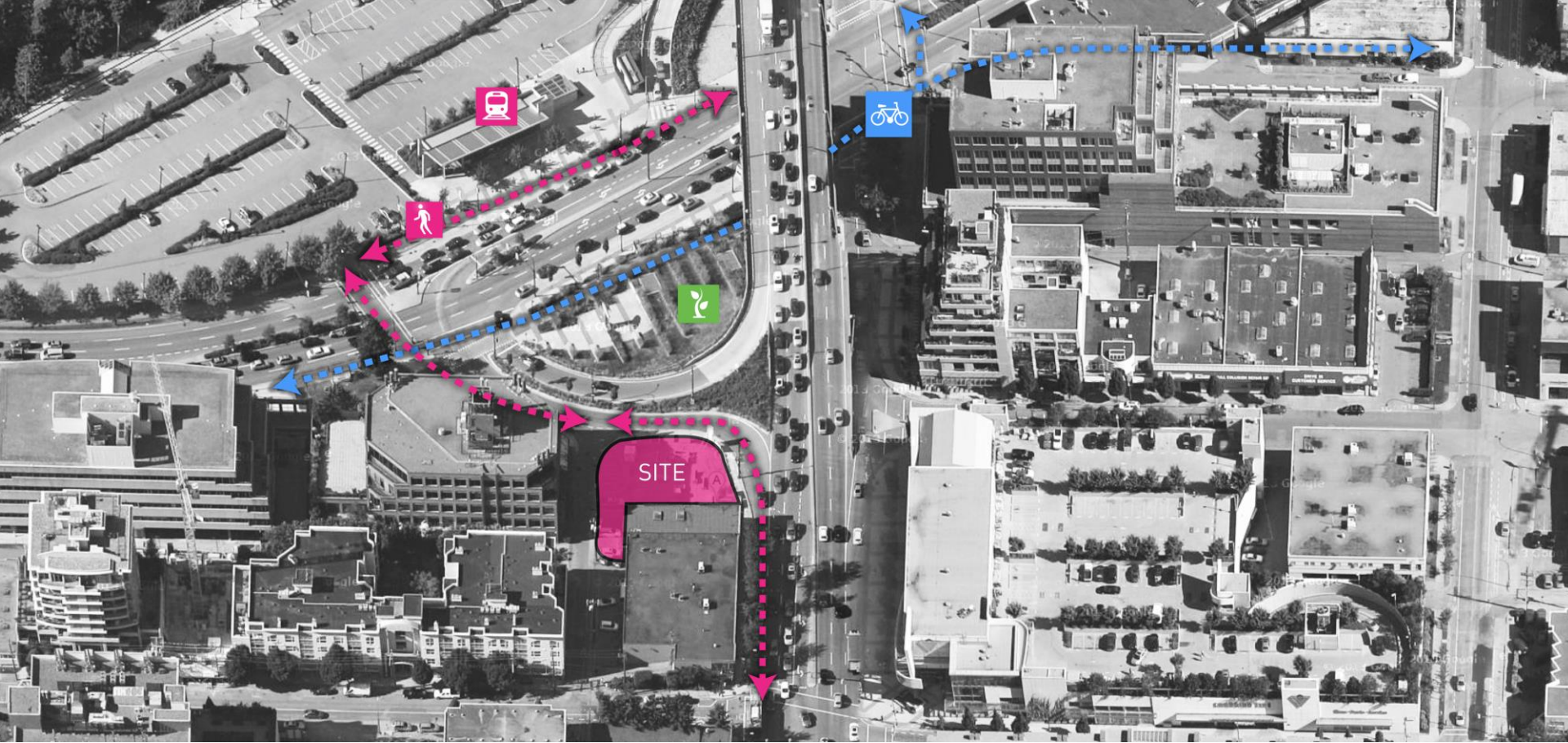


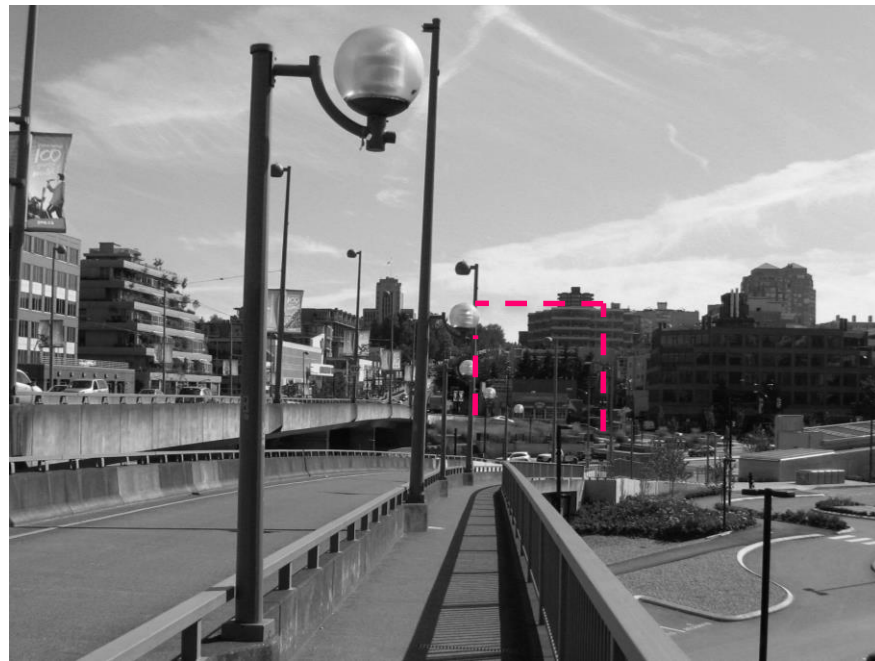


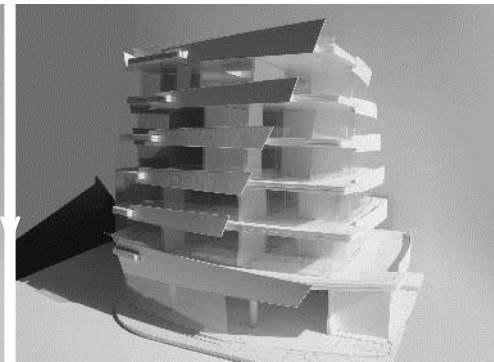
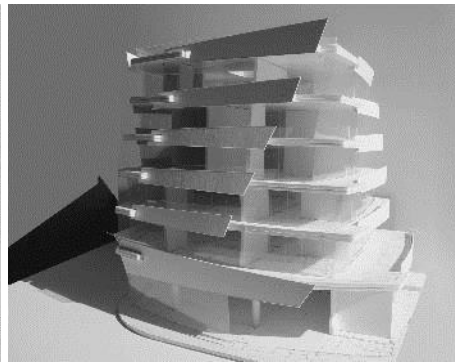
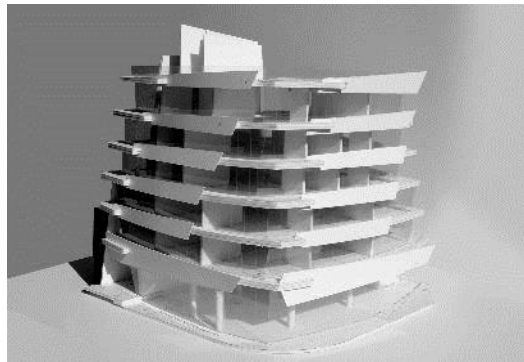
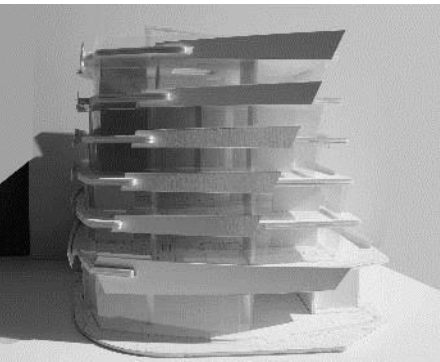




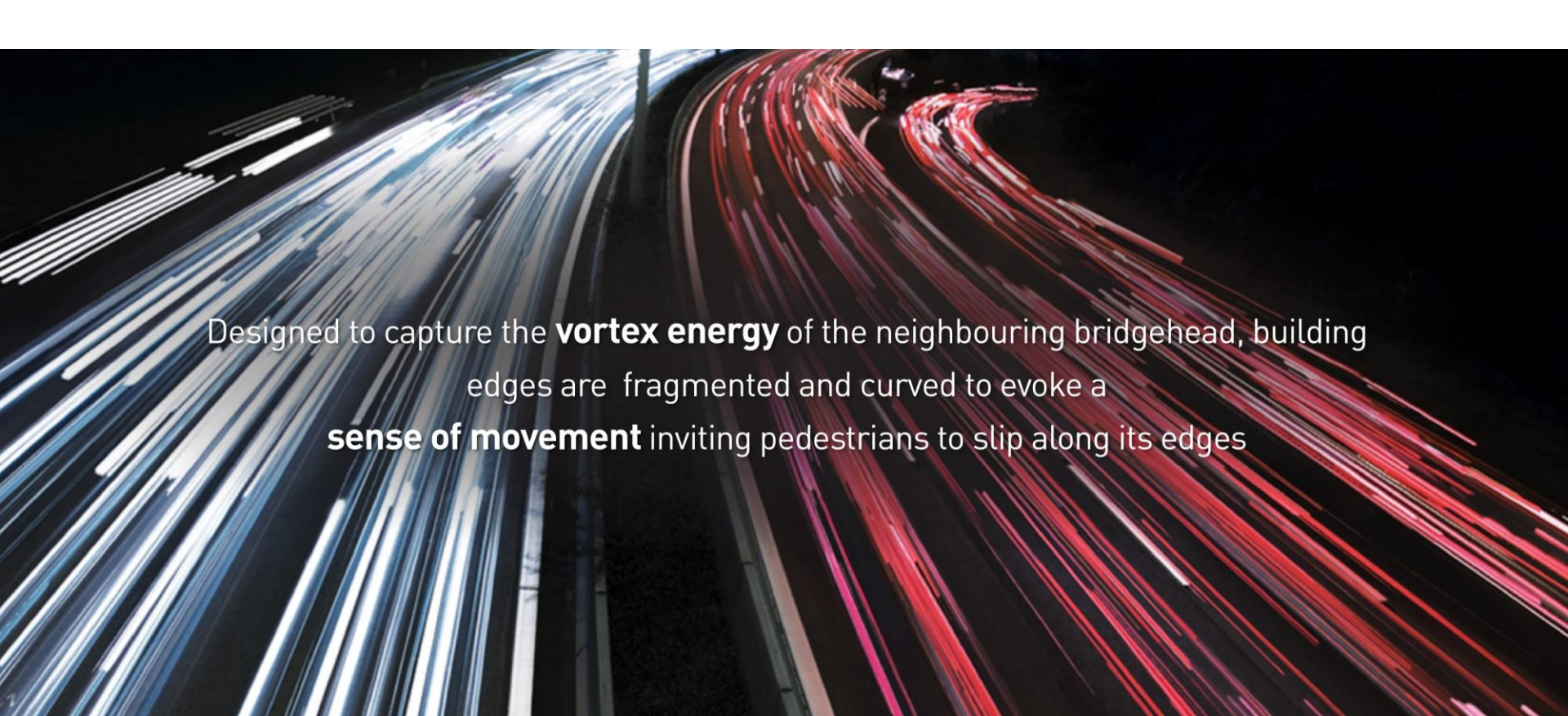












Designed to capture the **vortex energy** of the neighbouring bridgehead, building edges are fragmented and curved to evoke a **sense of movement** inviting pedestrians to slip along its edges



SOUTH CREEK LANDING





SOUTH CREEK LANDING





VERTICAL FOREST
BUILDING

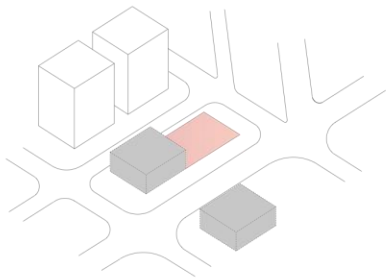


SITE - 2012

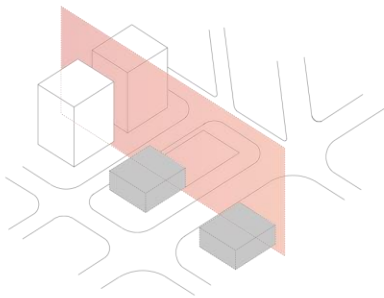


SITE - 1800's

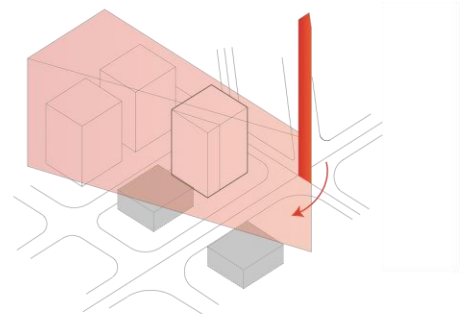




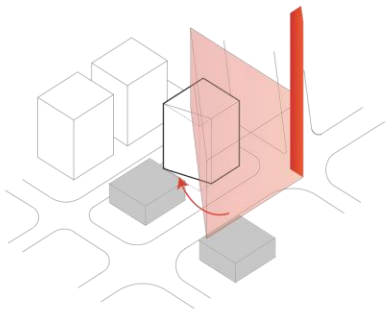
EXISTING VACANT SITE



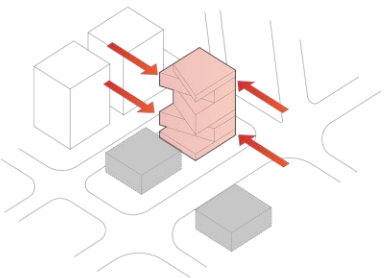
LANE ACCESS AT MIDBLOCK



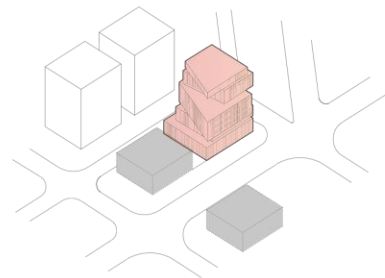
ROTATION OF BUILDING CONTOUR
FOLLOW PERPENDICULAR MAIN ST GRID



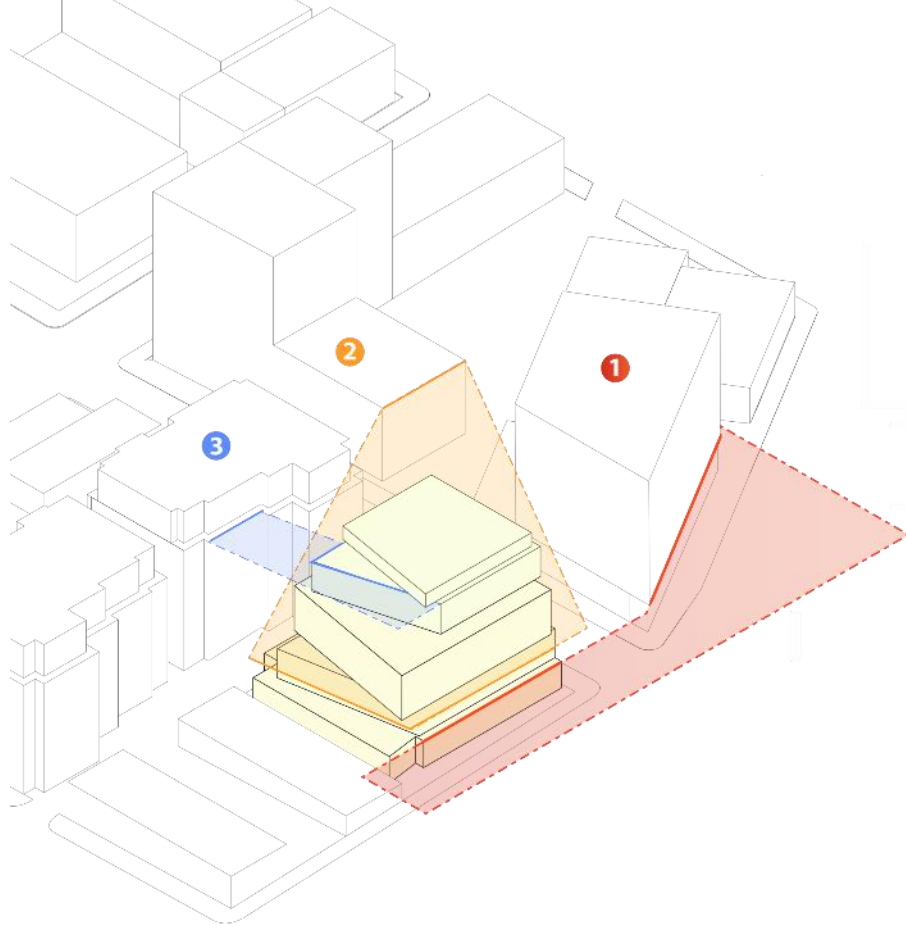
ROTATION OF BUILDING CONTOUR
TO FOLLOW KINGSWAY GRID



SETBACK MASSING ON EAST AND WEST
TO ACCOMMODATE VIEWS AND DAYLIGHT



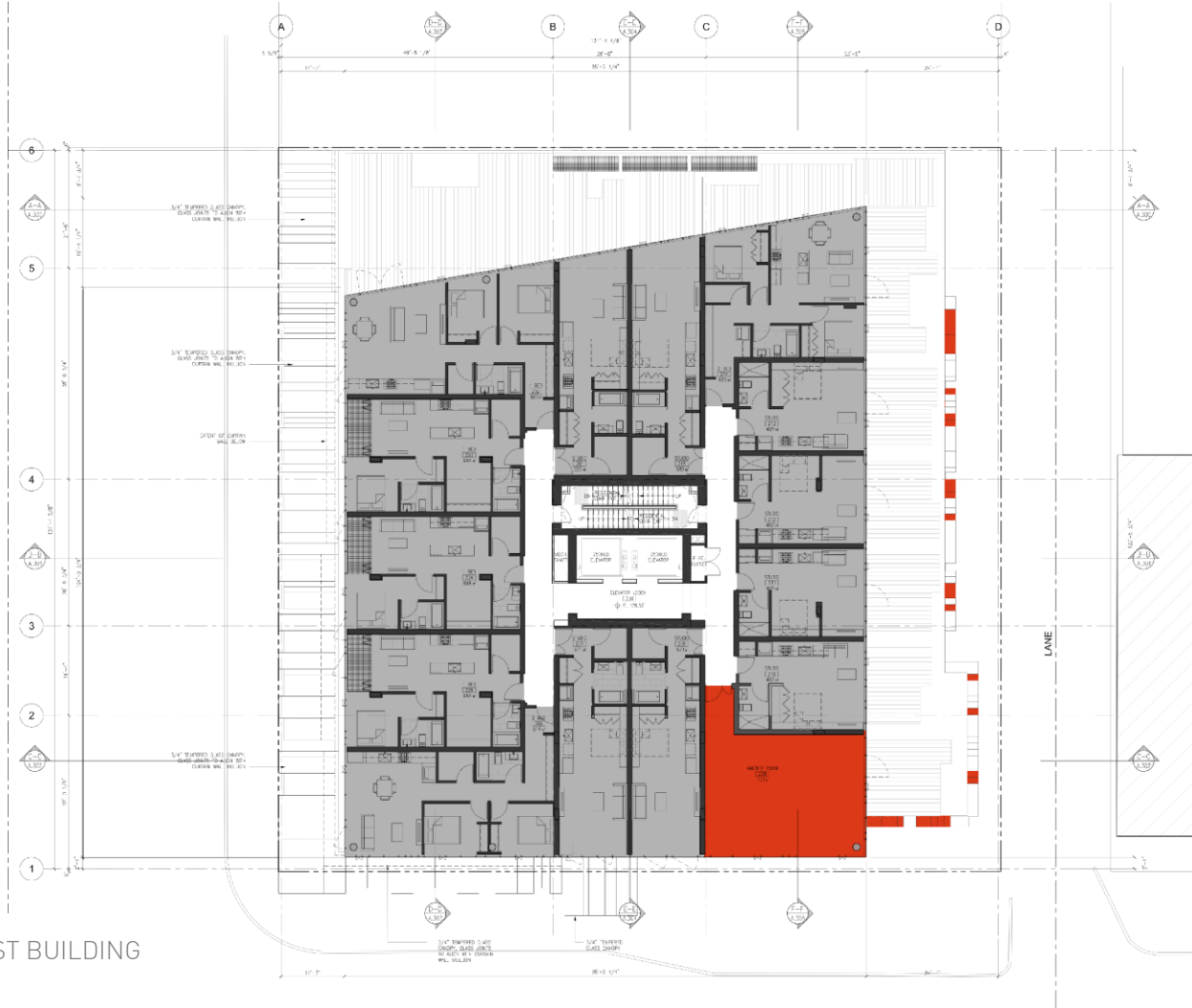
FOREST VERTICAL EXPRESSION



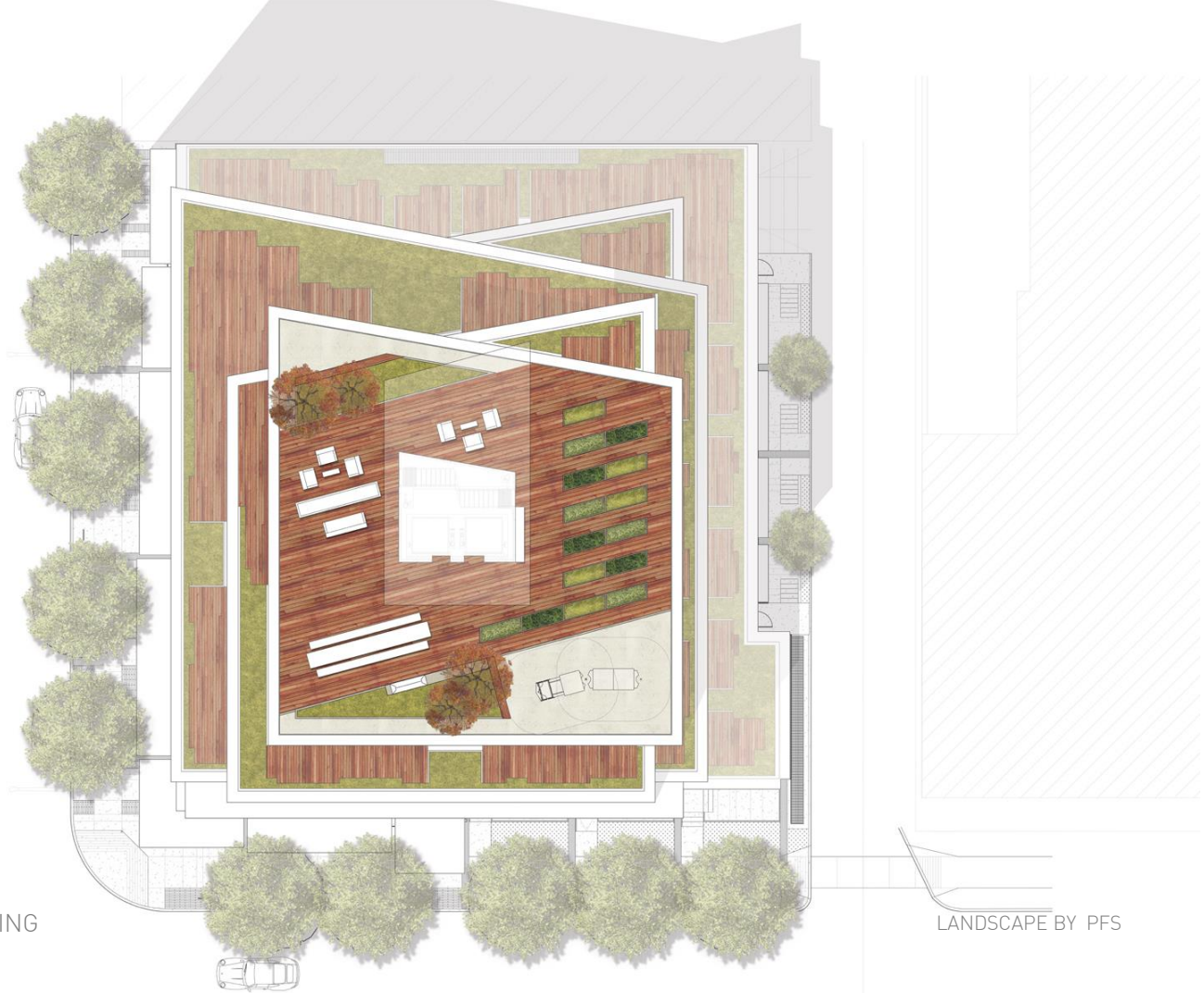


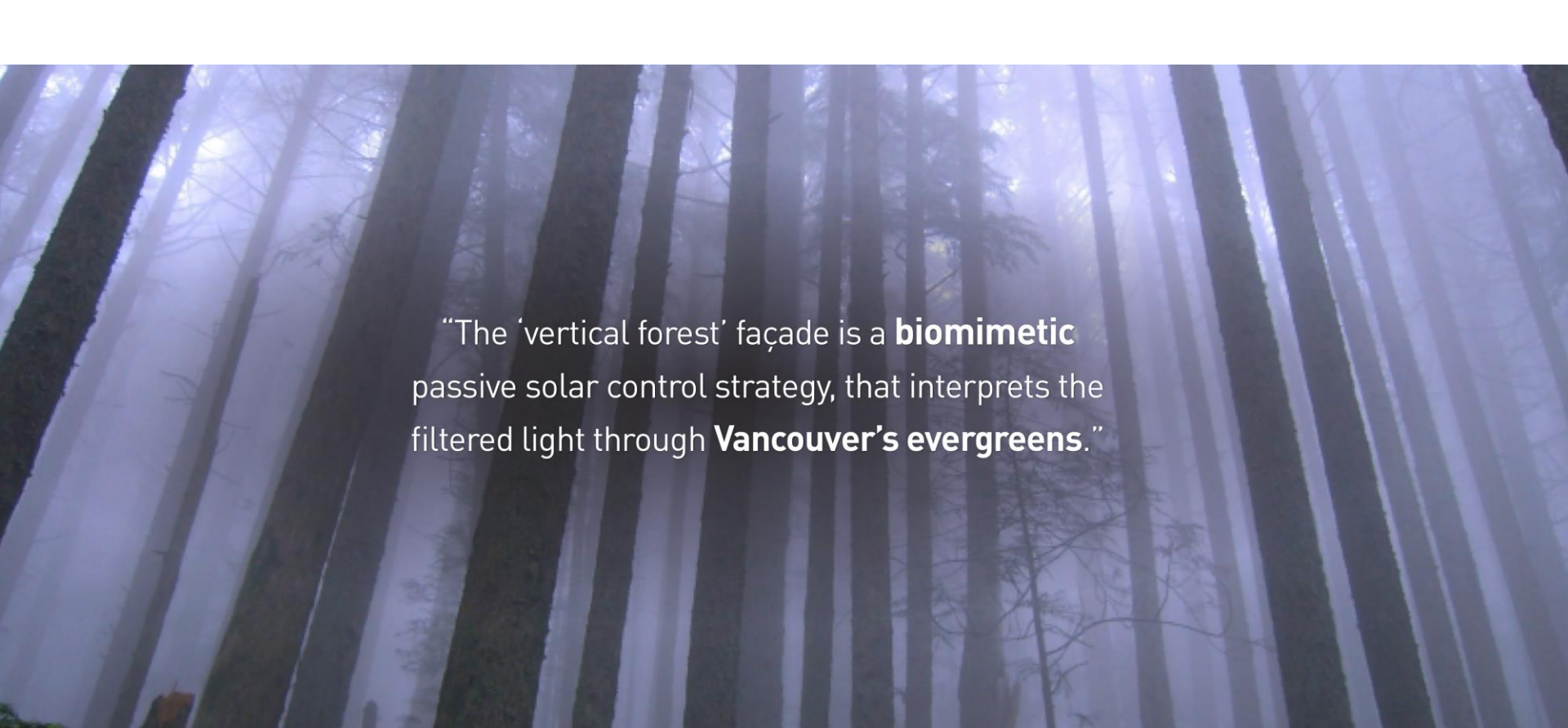
VERTICAL FOREST BUILDING

LANDSCAPE BY PFS









“The ‘vertical forest’ façade is a **biomimetic** passive solar control strategy, that interprets the filtered light through **Vancouver’s evergreens.**”



VERTICAL FOREST BUILDING







AM



VERTICAL FOREST BUILDING