



City of Los Angeles
Department of City Planning



Hollywood Central Park

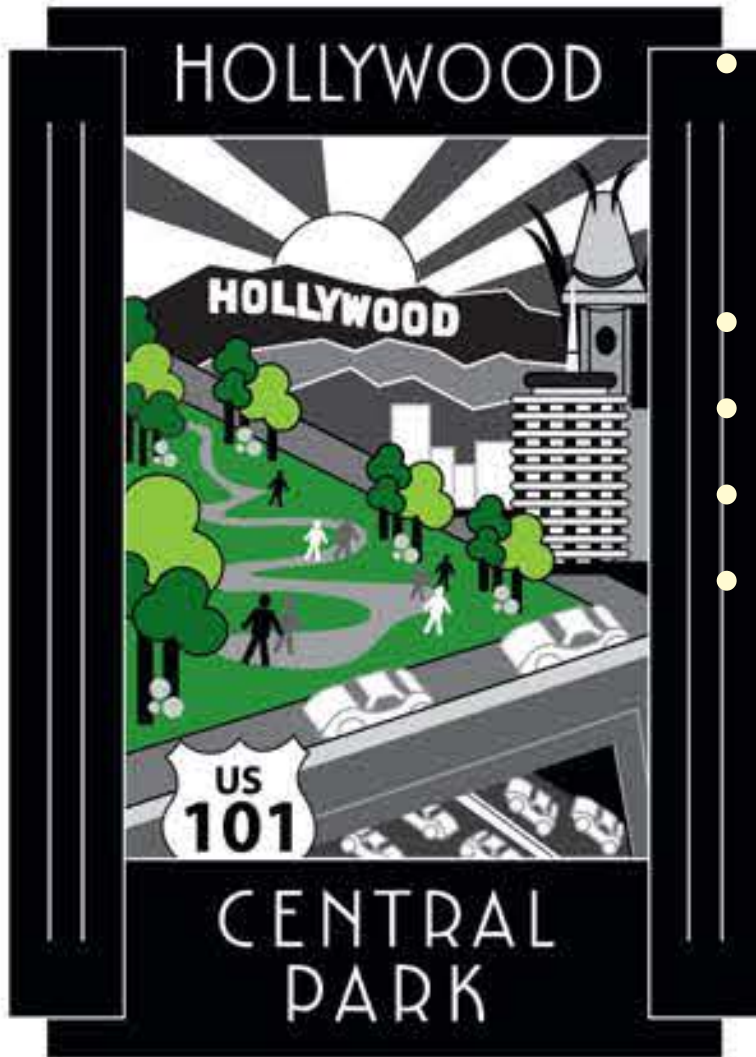


Creative Use of Aging Infrastructure

ULI, New York

October 22, 2014

Summary



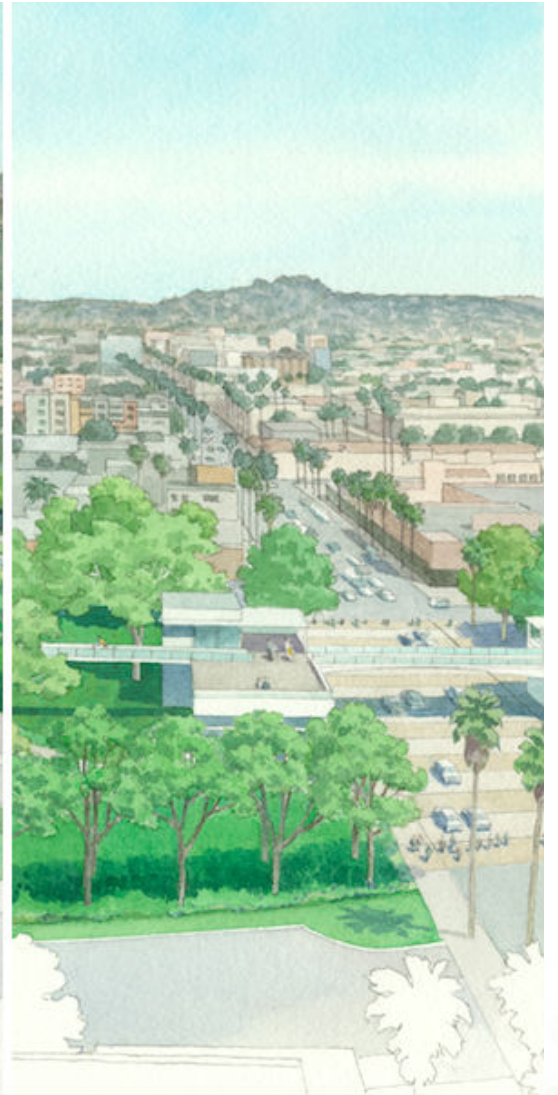
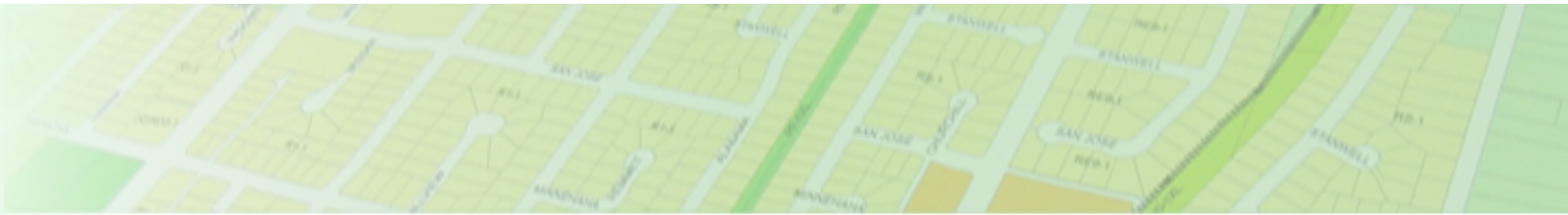
To be built over the 101 Freeway
between Hollywood Boulevard
and Santa Monica Boulevard.
A mile in length
44 acres of park space
Heart of a historic neighborhood
Hollywood's strong and diverse
community needs a grand stage
for the evolution of its local
culture.

Hollywood Freeway *Hollywood Central Park*



Hollywood Freeway Boundaries





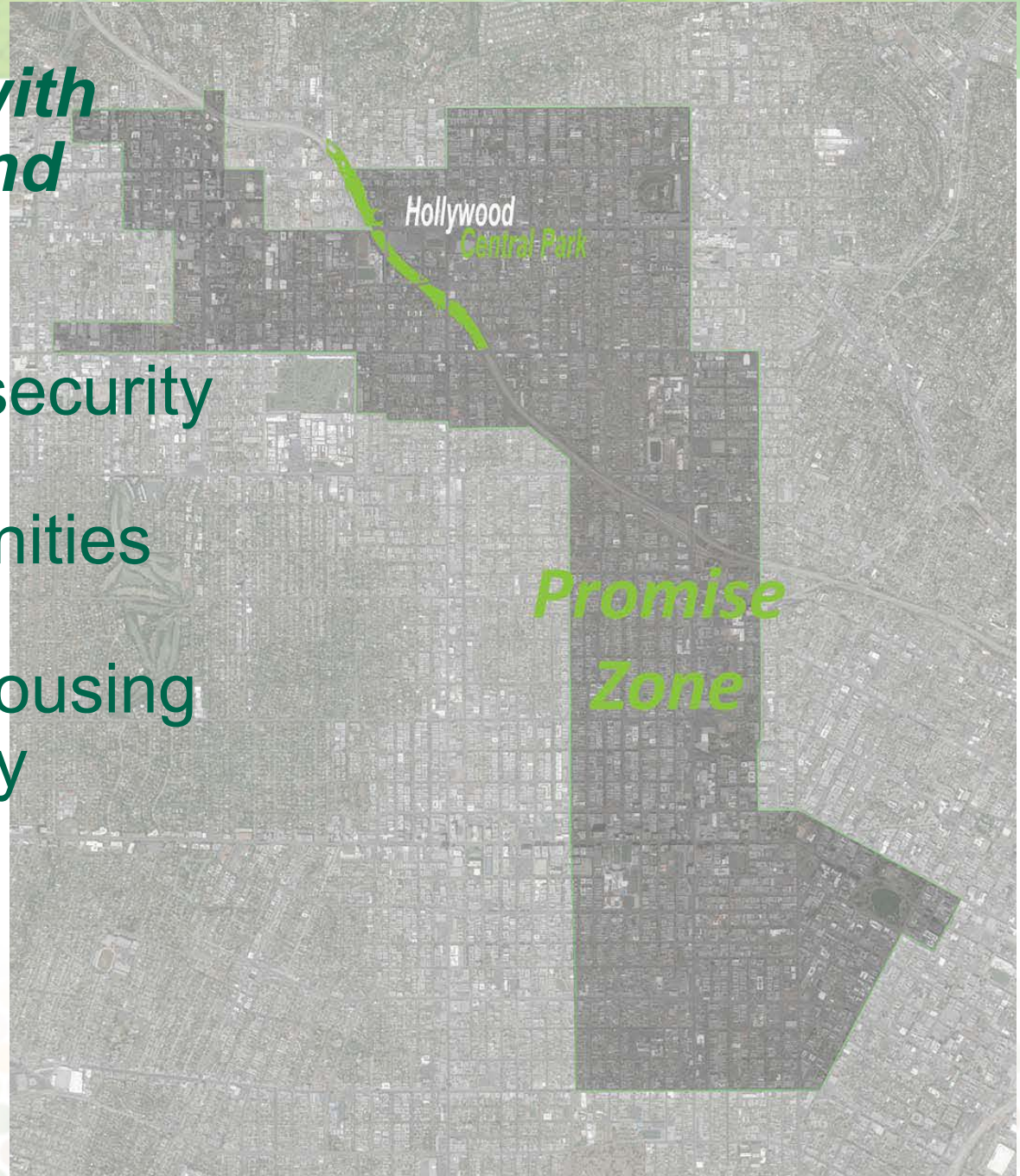
City of Los Angeles
Department of City Planning



The Promise Zone

***Initiative to partner with
local communities and
businesses***

- Create jobs
- Increase economic security
- Expand access to educational opportunities and quality
- Provide affordable housing
- Improve public safety



Green Space

Neighborhoods near and around the Park:

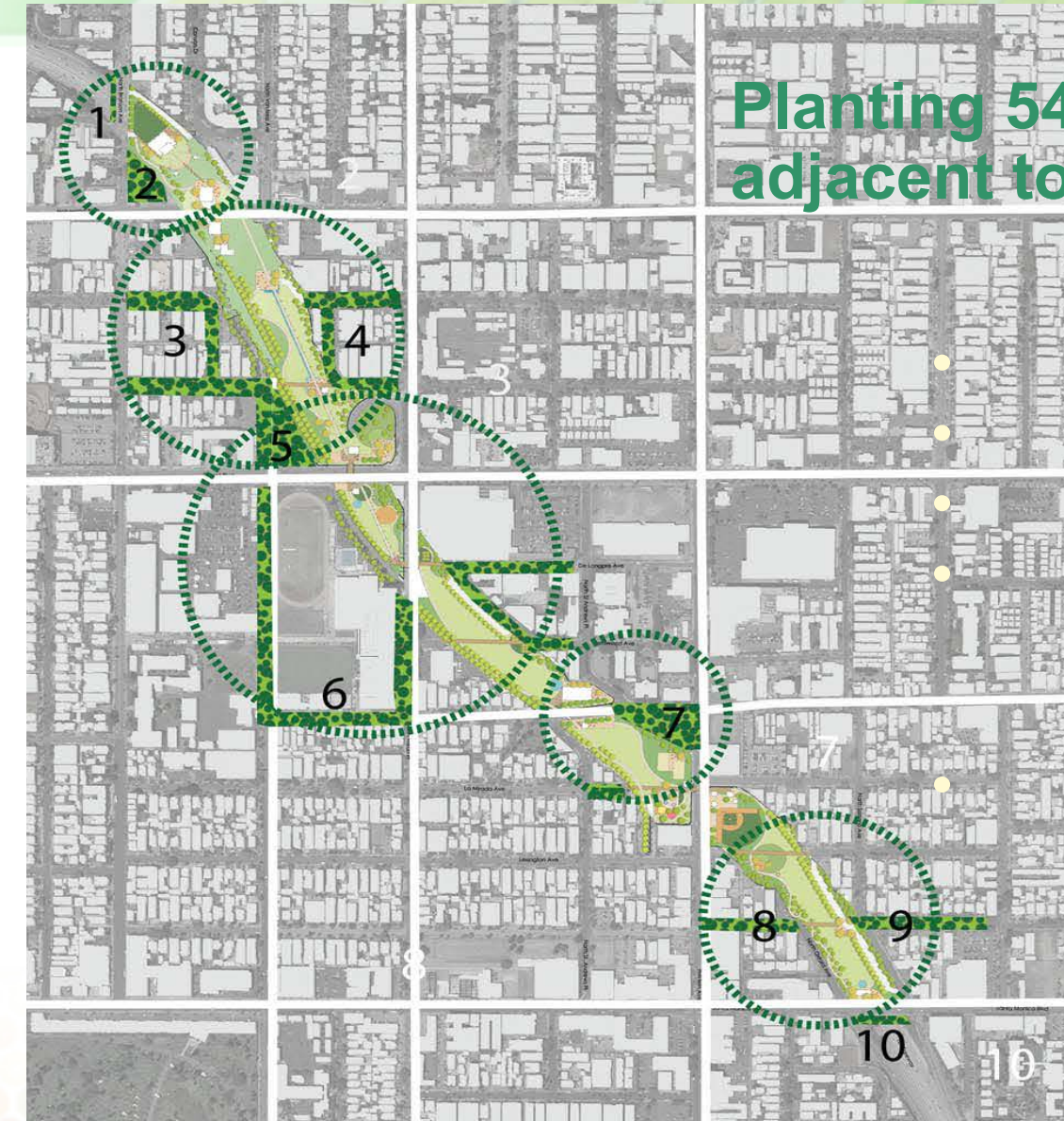
- 40,000 children live within 1 mile of the proposed Park
- 45,000 direct and indirect jobs to Hollywood Vast spanning Park to be home to playgrounds, grass and open space



10 Streets Strategy Plan

Planting 540 trees along 10 streets adjacent to the proposed Park

Filter air, water and sunlight
Shelter to animals
Recreational areas
Moderate local climate by slowing wind and storm water
Conserve energy by providing shade



Energy and Environment

The Hollywood Park will be the first and best line of defense against the harmful effects of global warming.

- Reduce automobile usage and fuel consumption
- Reduce greenhouse gas emissions
- Promote energy efficiency and conservation
- Moderate the artificially higher temperatures from the urban heat island effect
- Enhance local wind patterns through the park breeze



An aerial photograph of the Hollywood Park area in Los Angeles, showing a grid of streets and green spaces. The title 'Energy and Environment' is overlaid in a large, bold, green font.

Energy and Environment

The Hollywood Park will:

- Mitigate local precipitation anomalies amplified by the heat island effect
- Preserve essential ecological functions and protect biodiversity
- Help shape urban form and buffer incompatible uses
- Reduce public cost for stormwater management, flood control, transportation and other forms of infrastructure



Economics

The Park will bring economic vitalization to one of the most well-known and diverse, but also underserved and impoverished, areas in the City of Los Angeles.

Source: Hollywood Entertainment BID



\$49,745
Median
Household
Income
City of Los Angeles

\$24,872
Median
Household
Income
Hollywood

Construction of the Hollywood Central Park will create



● = 1,000 jobs
● = 1,000 apprenticeship and local hires

Mobility, Complete Streets and the Park

Mobility

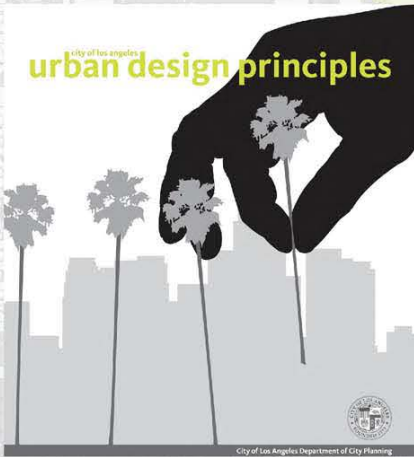
Plan

2035



Los Angeles Department of City Planning
General Plan Mobility Element

urban design principles



Mobility Plan 2035 provides a roadmap for achieving a transportation system that balances the needs of all road users. As an update to the City's General Plan Transportation Element (last adopted in 1999), Mobility Plan 2035 incorporates "Complete Streets" principles and lays the policy foundation for how future generations of Angelenos interact with their streets



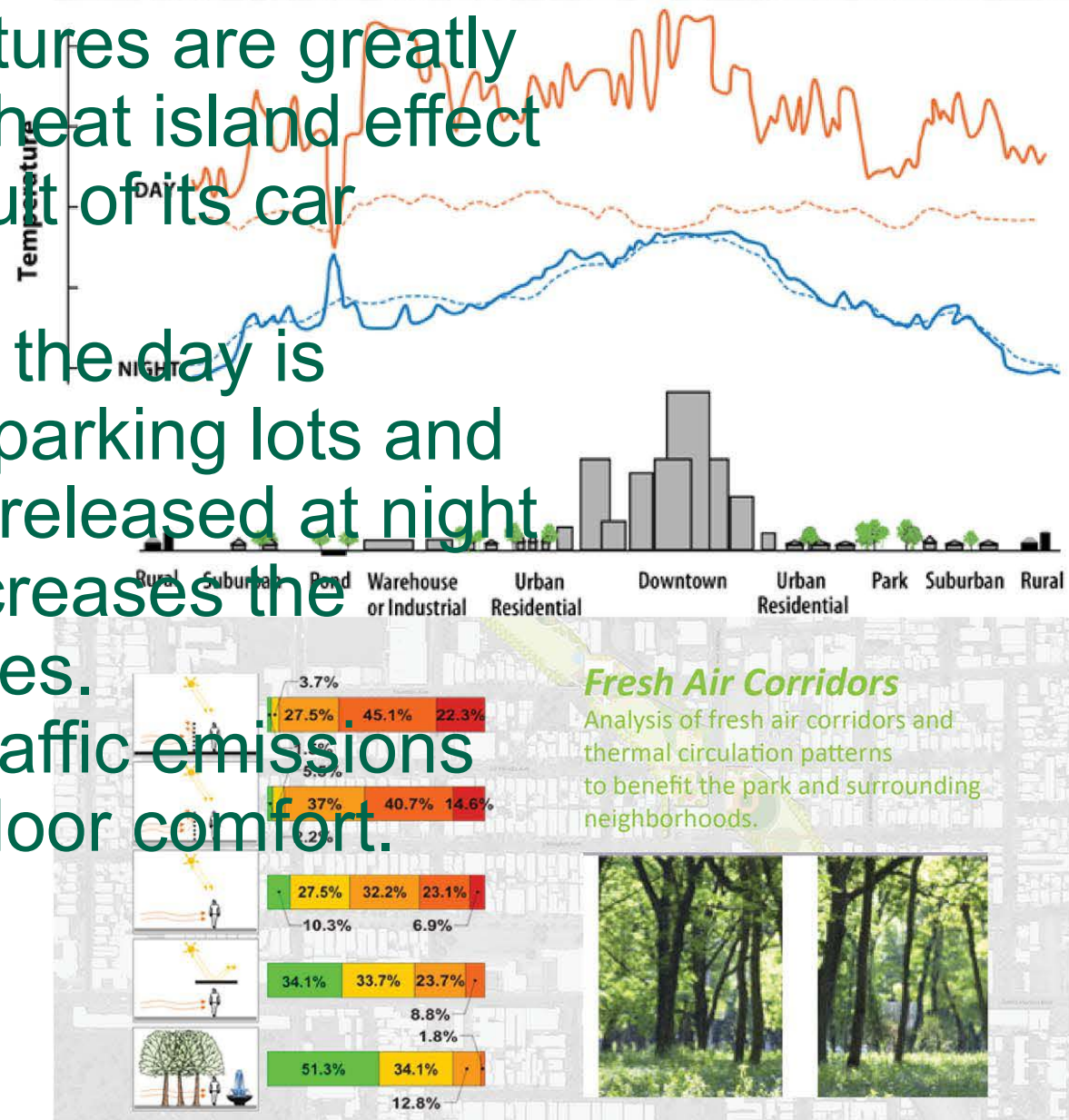
**City of Los Angeles
Department of City Planning**

Microclimate Design and the Park

Los Angeles temperatures are greatly increased due to the heat island effect which is mainly a result of its car infrastructure.

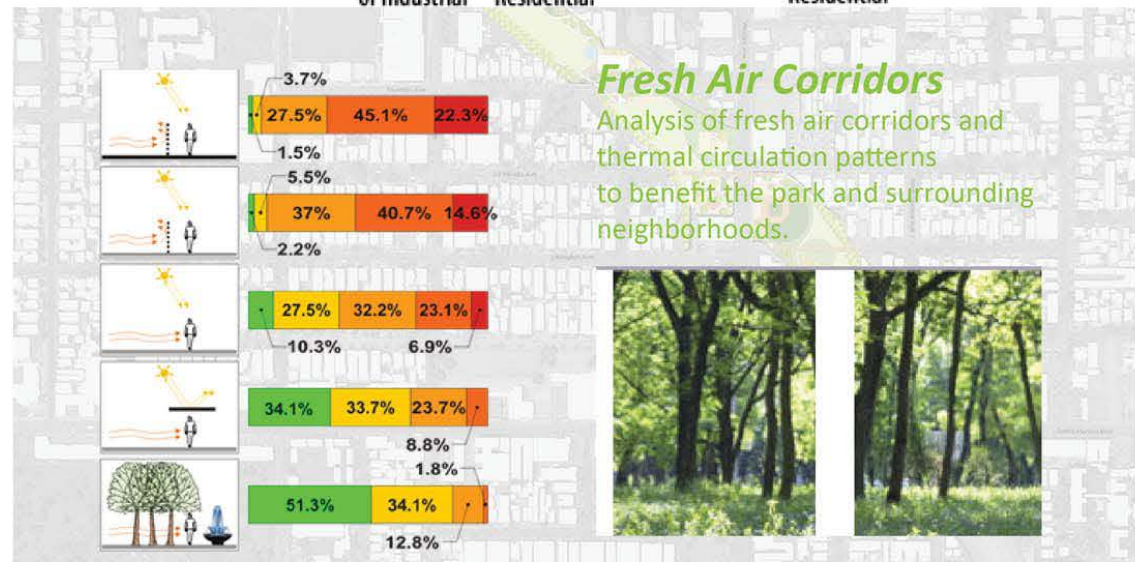
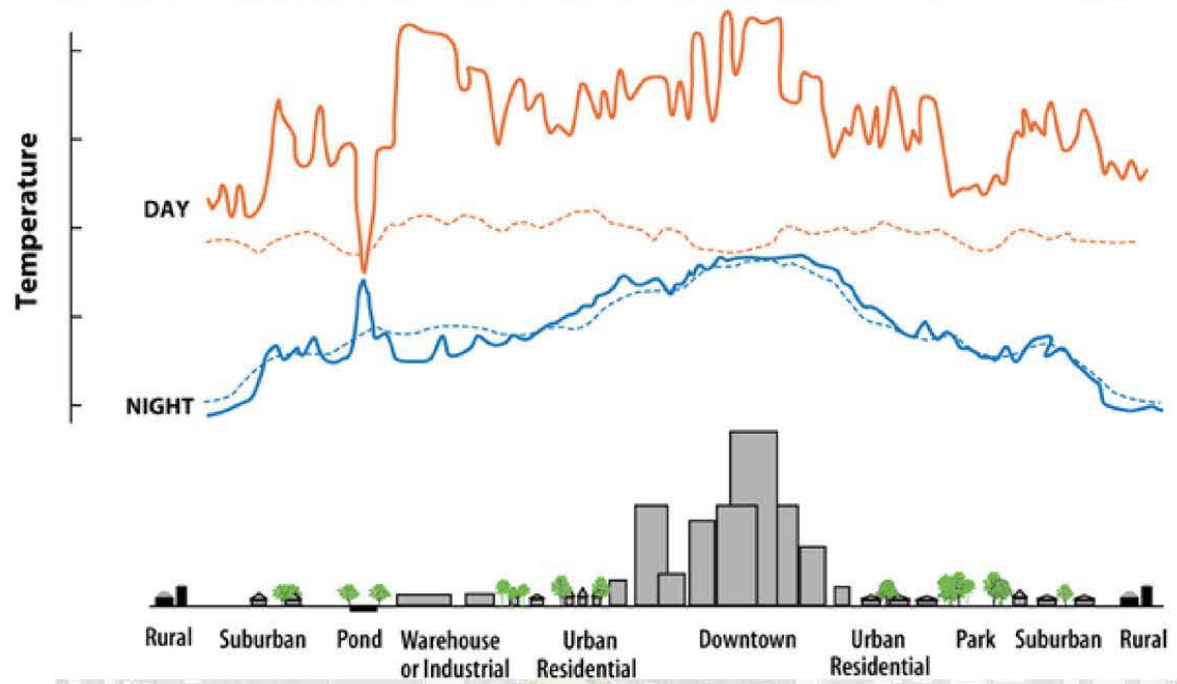
Solar radiation during the day is absorbed by streets, parking lots and building facades and released at night which significantly increases the nighttime temperatures.

Low air quality from traffic emissions also reduces the outdoor comfort.



Microclimate Design and the Park

Consequently,
designing
microclimates that
create pockets and
islands of comfort
are essential.





CASE STUDIES



Seattle Freeway Park

Deck Details:
5-acre park deck
covering I-5

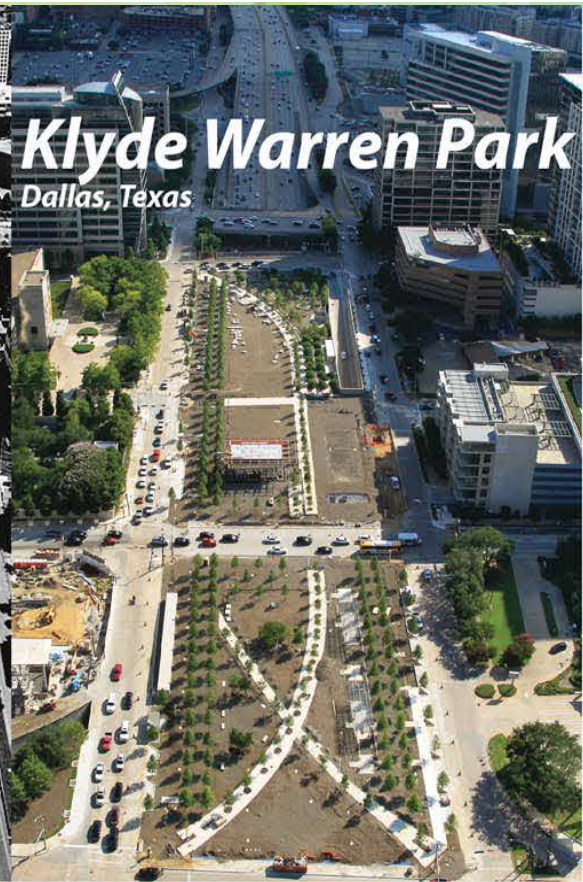


City of Los Angeles
Department of City Planning

Klyde Warren Park

Dallas, Texas

Deck Details:
5-acre park deck
covering Hwy-366



City of Los Angeles
Department of City Planning

Klyde Warren Park

Key Results/Lessons Learned:

The sustainable landscaping includes 37 native plant species and 322 trees, transforming a former freeway to a beautiful urban oasis.

The park is envisioned as a catalyst for the ongoing transformation of downtown Dallas by bringing quality of life, foot traffic to the area and increasing demand for surrounding properties.

Project Completion Status:

- Completed 2012

Project Costs:

- \$110 million



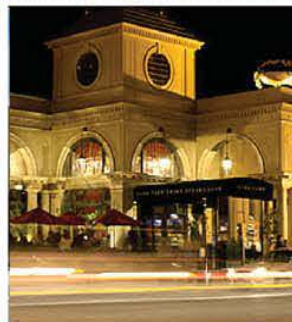
City of Los Angeles
Department of City Planning

Cap at Union Station

Columbus, Ohio

Deck Details:

- 7.72-acre deck covering 1-670

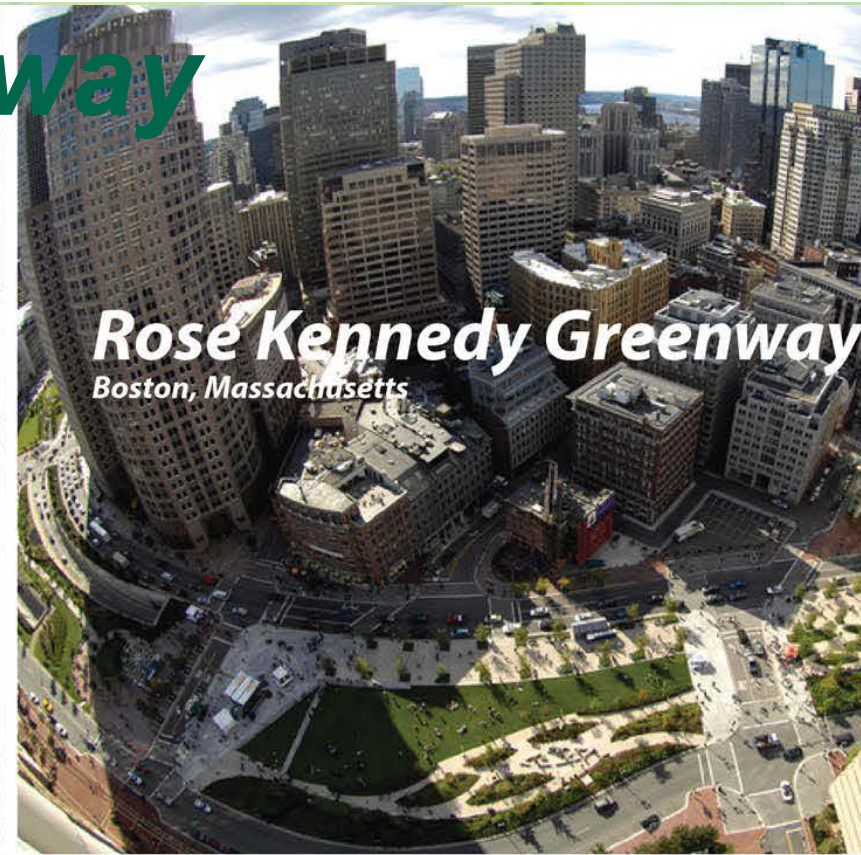


City of Los Angeles
Department of City Planning

Rose Kennedy Greenway

Columbus, Ohio

*Deck Details:
2,900 foot long
15 acre park-covered
tunnels*



City of Los Angeles
Department of City Planning



THE END

