

# Being There

Ray Gastil

Director of City Planning,  
City of Pittsburgh

# 18 Hour Neighborhoods

## Approach

- Mix of Uses/Users
- Paying Attention
- Innovation and Authenticity

## Locations: Interventions, Programming, Change

- Greater Downtown
- Allegheny Center
- East Liberty
- Uptown

# Pittsburgh



# Greater Downtown

- 33.7% increase in residents in the Golden Triangle between 2010 and 2015
- 1,685 Rental Units Have Opened Since the Beginning of 2010
- 3,416 Proposed Residential units for Greater Downtown
- 1,535 Hotel Rooms in the pipeline in the next two years, a 28% increase





**Downtown: Market Square and PPG Place Plaza**



**Market Square**





**Downtown: PPG Plaza**



## Downtown: Market Square

Photo: Open Streets PGH





**Downtown: Parking Day**



**Envision Downtown**





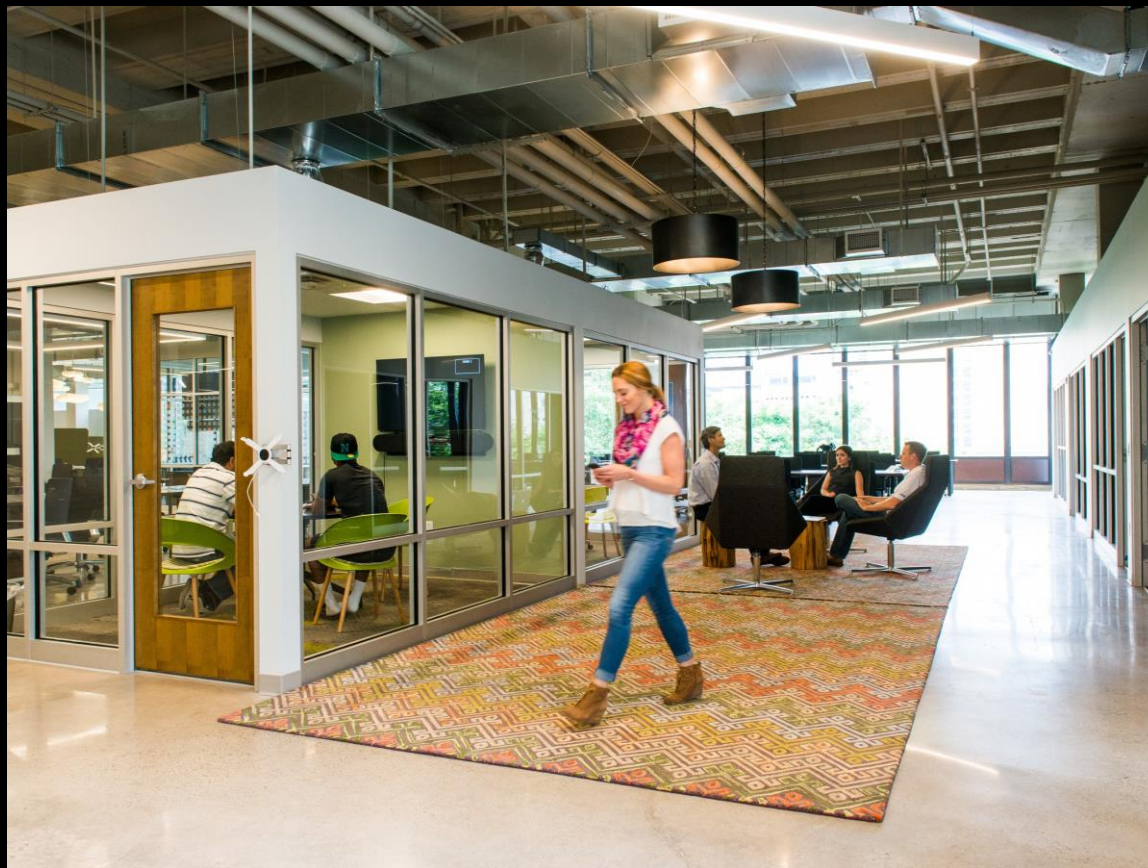
**Downtown: PNC Open Space**





## Allegheny Center

Photo: Historical Society of Western Pennsylvania



## Allegheny Center: Nova Place

Alloy 26



**Allegheny Center: Today's Context**





**Allegheny Center: Nova Place**



## **Allegheny Center: Thrival at Nova Place**

Thrival Innovation



**East Liberty: Before Urban Renewal**





**East Liberty: Urban Renewal Era**



## East Liberty: Urban Renewal

Joy of Life Sculpture



**East Liberty**





## East Liberty

Joy of Life Sculpture



## East Liberty

Beats and Eats Program

Photo: Kelly Strayhorn Theater





## Art and People

Lets Play! Family Dance Party

Photo: Kelly Strayhorn Theater



# East Liberty

- We are looking at growth scenarios for Pittsburgh, communities like East Liberty are critical for this
- Rental units under construction or in the pipeline



**Bridging the Busway**



**Bridging the Busway**

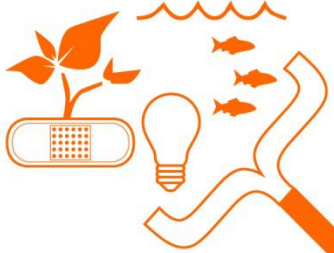




**East Liberty Public Transportation**

ECOLOGY / PUBLIC HEALTH / DISTRICT  
ENERGY / WATER / SEWER / WASTE

## ENVIRONMENTAL BENCHMARKING



LOCAL KNOWLEDGE / EXPERTISE /  
IDEAS / INSIGHTS

## PUBLIC PARTICIPATION



## LAND & INFRASTRUCTURE

REAL ESTATE / NEIGHBORHOODS /  
TRANSPORTATION / INFRASTRUCTURE



## ECONOMIC DEVELOPMENT

BUSINESS TRENDS /  
LOCAL MARKETS / WORKFORCE

LOCAL  
OPPORTUNITY

ACTION  
PLAN

IMPLEMENTATION STRATEGY /  
FUNDING SOURCES / POLICY

UPTOWN  
ECO-  
INNOVATION  
DISTRICT

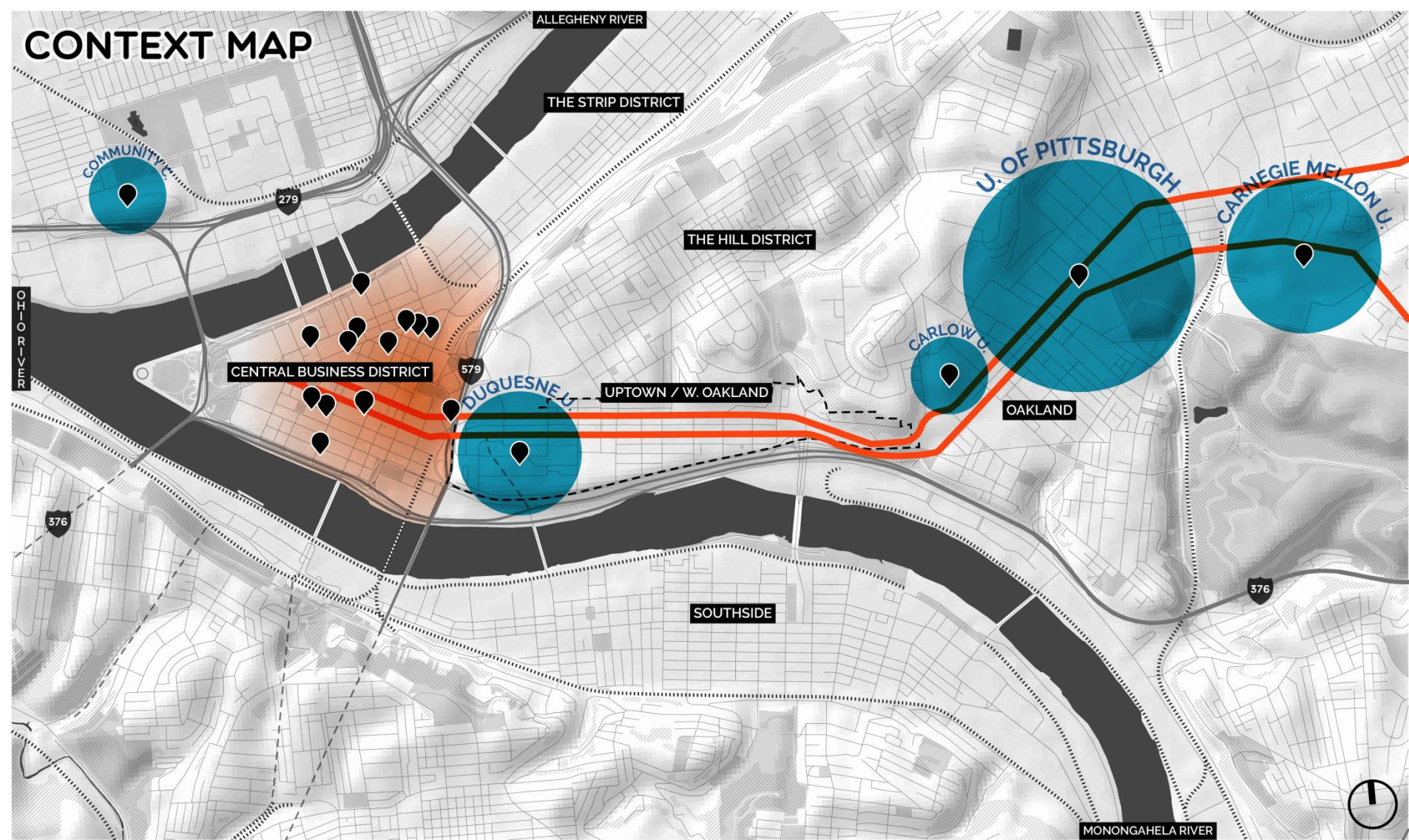
PRIORITY SITES / ENVIRONMENTAL TARGETS /  
LAND USE / DEVELOPMENT / TRANSPORTATION  
IMPROVEMENTS



**Uptown: Eco-Innovation District Open House**



# CONTEXT MAP



--- STUDY AREA    ● COLLEGE/UNIVERSITY    — 5TH - FORBES CORRIDOR

● COLLEGE/UNIVERSITY CAMPUS

● CENTRAL BUSINESS DISTRICT



