



AECOM

Built to deliver a better world

Transformative Urban Regeneration

Unlocking Potentials, Driving Growth

2016 ULI Fall Meeting

Sean Chiao

President, Asia President
AECOM

aecom.com



River of Life

Kuala Lumpur, Malaysia



Transformative Urban Regeneration
Unlocking Potentials Driving Growth
2016 ULI Fall Meeting



Calligraphy Promenade

Taichung, Taiwan



Central-Mid Levels Escalator

Hong Kong



AECOM



River of Life

Kuala Lumpur, Malaysia



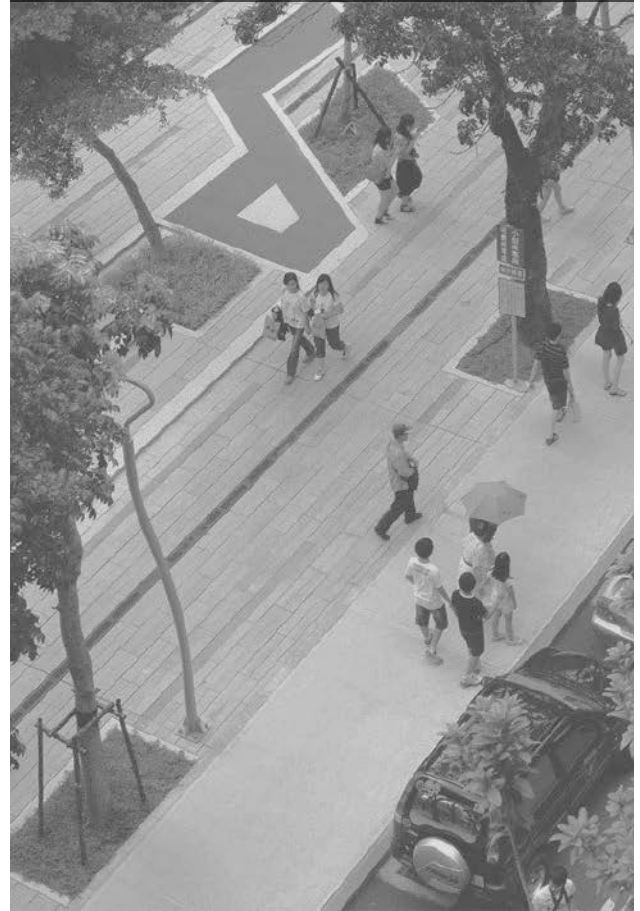
Calligraphy Promenade

Taichung, Taiwan



Central-Mid Levels Escalator

Hong Kong



Transformative Urban Regeneration
Unlocking Potentials Driving Growth
2016 ULI Fall Meeting

AECOM

River of Life

Kuala Lumpur, Malaysia

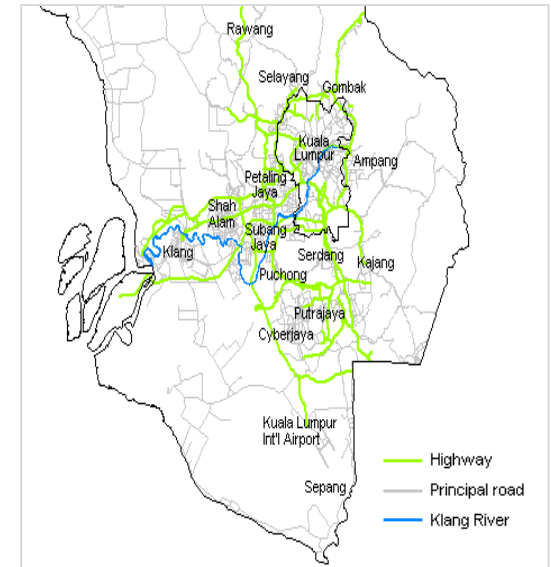
Context

Entry Point Project in Greater Kuala Lumpur-
Klang Valley National Key Economic Area under
the Economic Transformation Programme

- 4th biggest river basin in Malaysia, joined by 13 major tributaries
- Length of River: 120 km
- Catchment Area: 1,288 km²
- Project Value: 1.6 Billion USD

Goal

Transform the rivers into a vibrant & thriving waterfront by 2020
Create an Iconic waterfront development

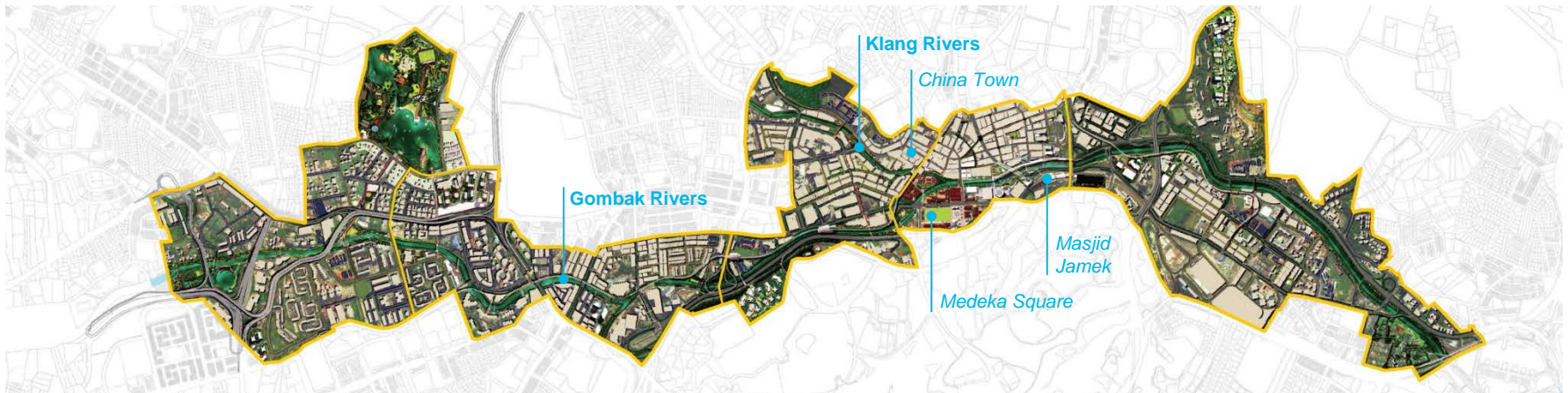


River of Life Catchment Area



Project Scope

- Provide a **strategic framework** through **Urban Design Guidelines** and **Landscape Design Guidelines** to promote cohesive future developments in the entire region
- Deliver Master Planning & Beautification component including flood mitigation strategies (Study Area: 781.5 hectares)
- Detailed design proposals including tender documentation
- Construction management across the **10.7km** site

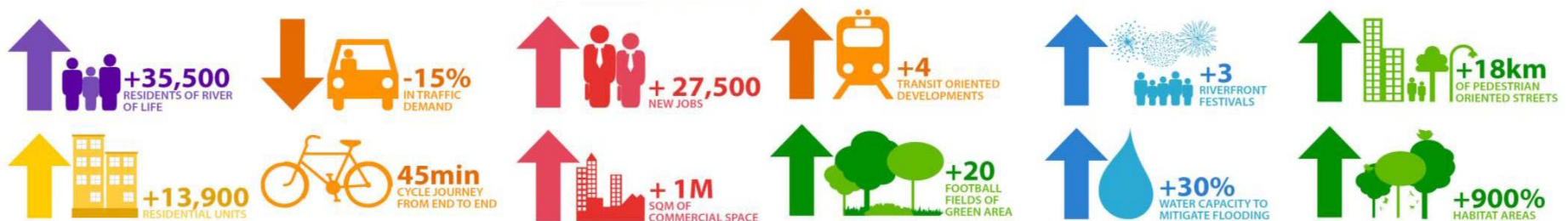


Key Issues and Challenges

- Drive community transformation and engagement with water infrastructure
- Measure value and impact to economic, natural and social environments
- Work with complex steering committees cause delays in program approval
- Knowledge transfer fundamental to building local capacity of both AECOM staff and local sub-consultants.



River of Life – Organization Structure



River of Life Future Land Development Zones

Residential Development
along DUKE Highway

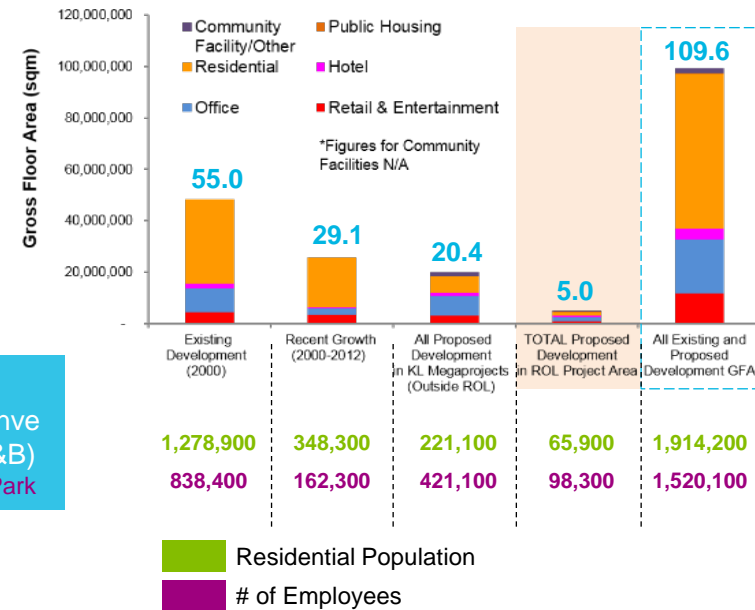
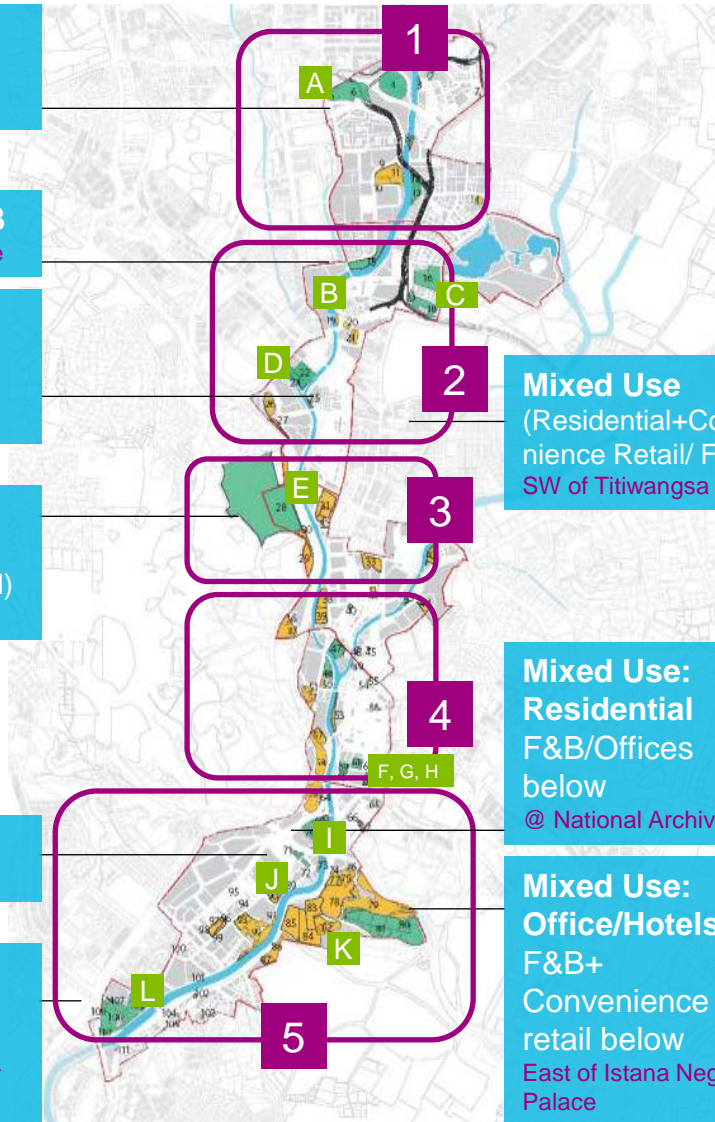
Riverside Retail/F&B
North of Tamansari Riverside

Mixed Use
(Hotel/Service Apartments + F&B)
at PWTC confluence

Mixed Use
(Hillside residential with F&B + convenience retail)
near Universiti Malaya

Office / Residential
North-End of Brickfields

Mixed Use
(residential w/ F&B + convenience retail)
South End of Brickfields near Eco-City



Parcels need to enhance:


- activation of the river corridor
- balanced mix of development types
- appropriate response to neighborhood context
- promotion of transit oriented development

Government Land Parcels: 111

Total Area of Government Parcels:
108.9ha (14% of total Project Area)

Kuala Lumpur, Malaysia



An aerial photograph of Kuala Lumpur, Malaysia, showing a mix of modern high-rise buildings and historic architecture. The city is built on a valley with hills in the background. A river flows through the center, and a large green field is visible. The sky is blue with scattered white clouds.

Masjid Jamek

Bangunan Sultan Abdul Samad

Masjid Jamek Grand Stairs



Transformative Urban Regeneration
Unlocking Potentials Driving Growth
2016 ULI Fall Meeting



AECOM

Current Works – Masjid Jamek



Phase 1 Guiding Gallery vs. Current Works on River Edges



Completed Work: China Town

- **A Bowlful of Memories** by Stephanie Kuen
- Captured fond memories of the hustle and bustle of KL streets through art
- Incorporated Chinese paper cut to create gateways to China Town



China Town Streetscapes (after)





River of Life

Kuala Lumpur, Malaysia



Transformative Urban Regeneration
Unlocking Potentials Driving Growth
2016 ULI Fall Meeting



Calligraphy Promenade

Taichung, Taiwan



Central-Mid Levels Escalator

Hong Kong



AECOM

Calligraphy Promenade

Taichung, Taiwan

Taichung is evolving into a Mega Regional Hub in Asia

- World's Best Cultural and Art City
- Top 7 Intelligent Community
- Intelligent Community of the Year



Content and Context

- Land Area: 6.5 hectares
- Total Length: 3 km
- First Phase: 1 km
- Linking National Science Museum to Civic Square, largest public space in Taichung
- Master Plan was submitted to Central Government by Taichung City to get funding from Central Government



The Reading Grove



BEFORE



Self-renewal of Adjacent Properties



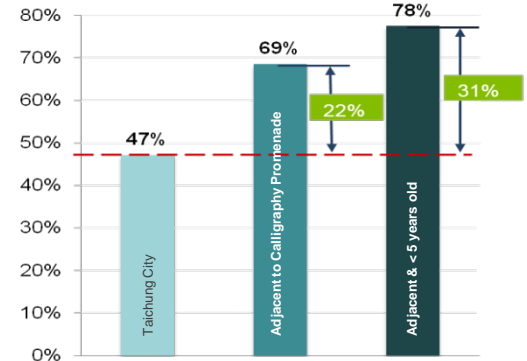
150,000 shrubs planted on vertical wall of Eslite Bookstore reduced carbon emission by 195 kg/day



Opportunities created for young entrepreneurs within the community

2009: Masterplan completed
2010: Construction began
2012: Landscape construction completed

Comparison of Property Value Increase 2009 - 2012



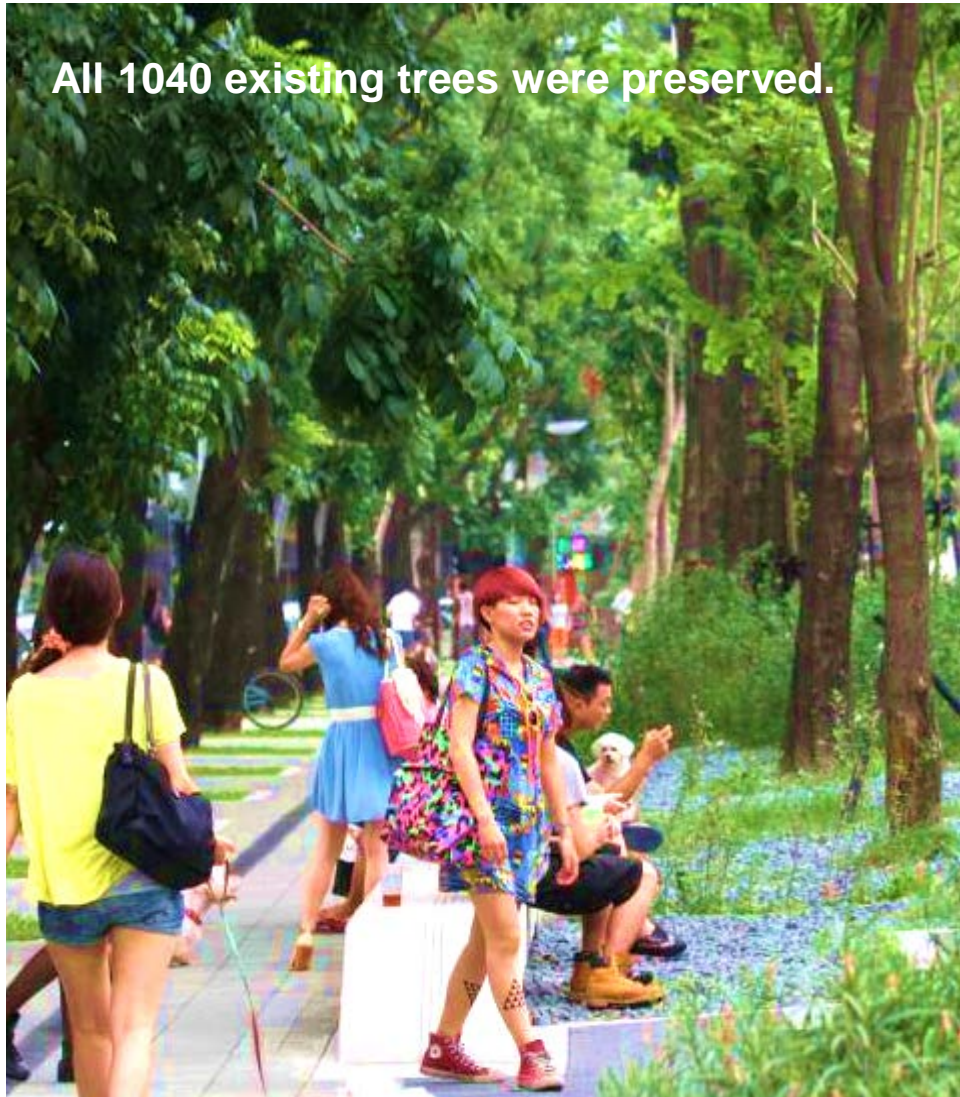
Adjacent property values increased 69%

- **22%** more than overall Taichung average
- Real estate **< 5 years** exceeded by **31%**

Integrated Existing Environment & Communities

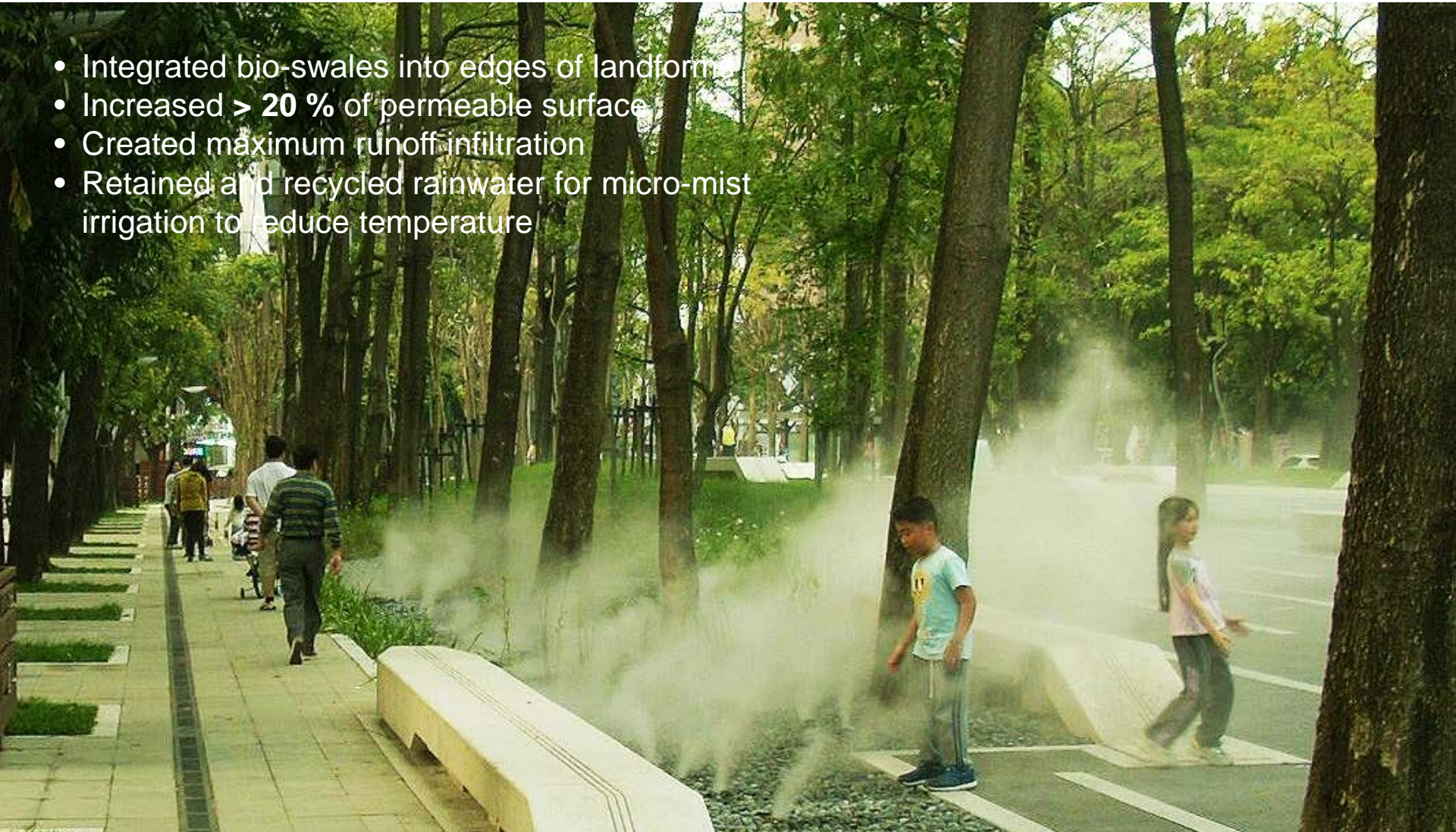


All 1040 existing trees were preserved.



Enhance Sustainability

- Integrated bio-swales into edges of landform
- Increased > 20 % of permeable surface
- Created maximum runoff infiltration
- Retained and recycled rainwater for micro-mist irrigation to reduce temperature



Created Venue for Festivities





Activated Civic Square



Activated Civic Square



Annual Taichung Jazz Festival:
over **1.2 million** audience in 2 weeks



River of Life

Kuala Lumpur, Malaysia



Transformative Urban Regeneration
Unlocking Potentials Driving Growth
2016 ULI Fall Meeting



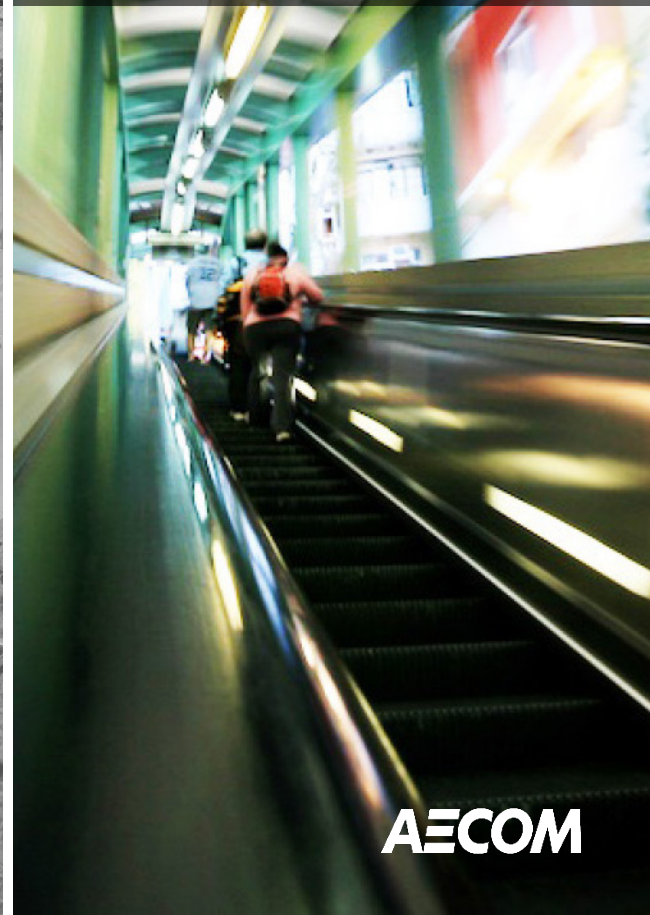
Calligraphy Promenade

Taichung, Taiwan



Central-Mid Levels Escalator

Hong Kong

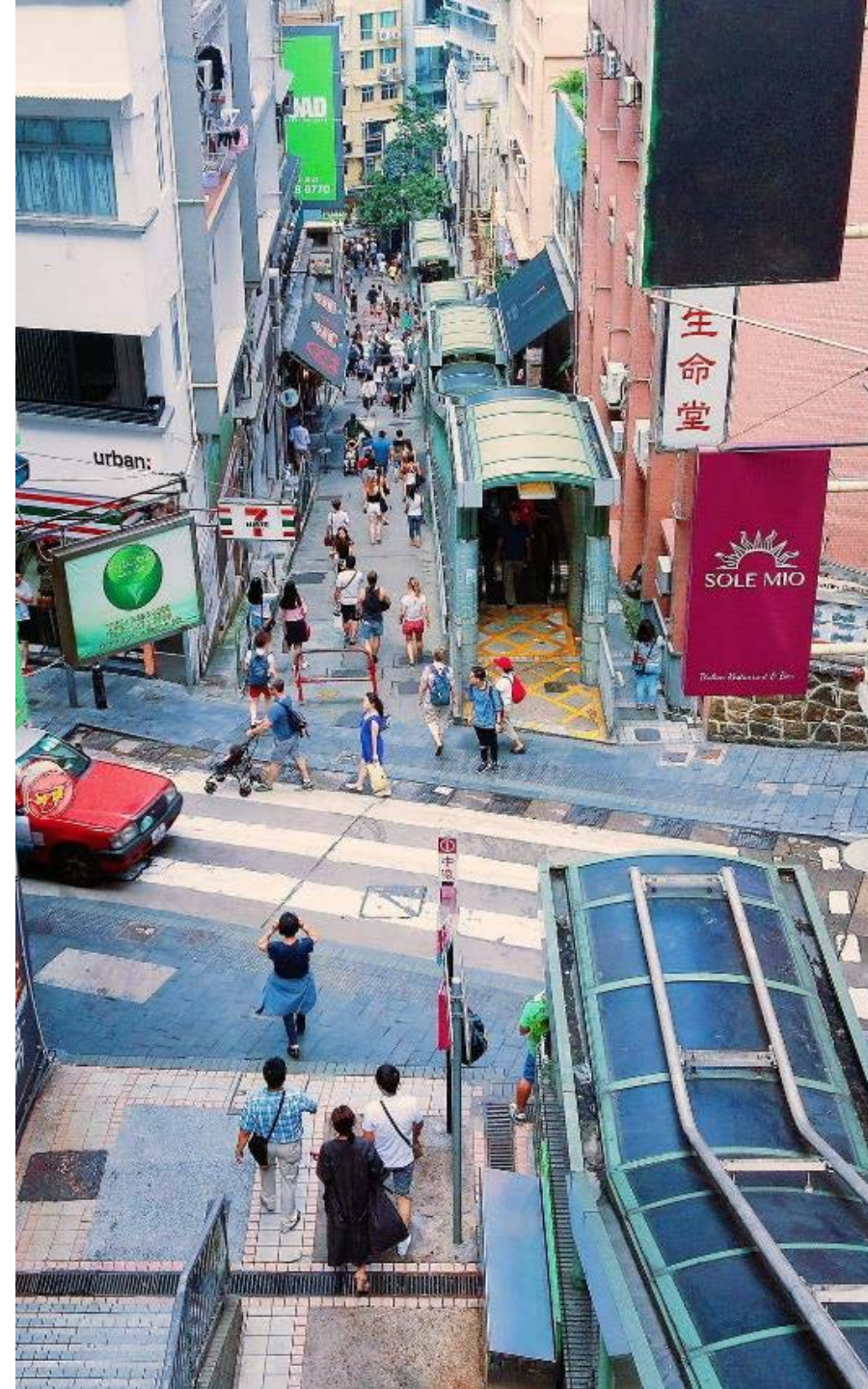


AECOM

Central-Mid Levels Escalator

Hong Kong

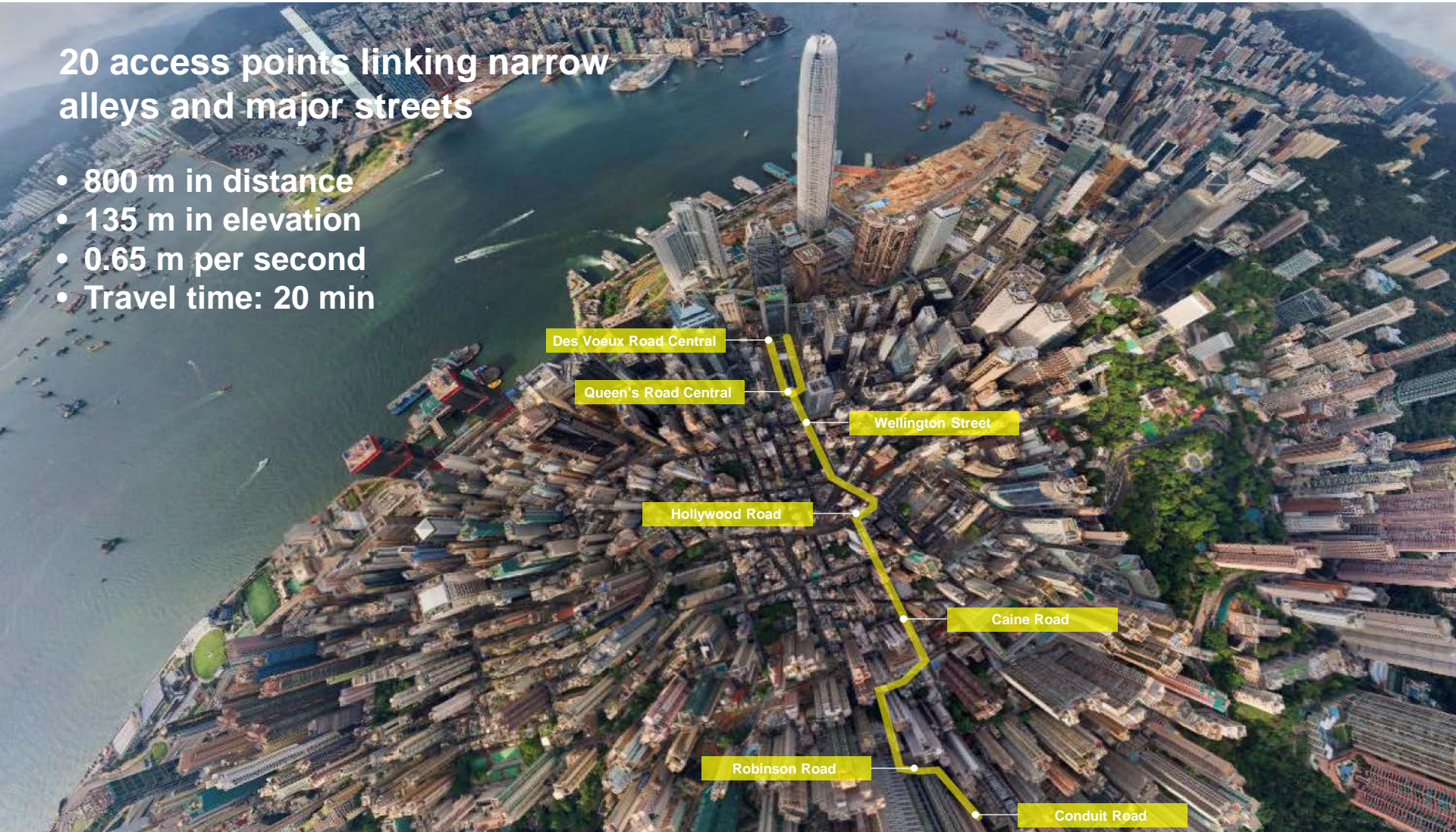
- Opened in Oct, 1993
- World's **longest** outdoor escalator system
- **First** public moving walkway system in HK
- **18** reversible one-way escalators, **3** reversible one-way travellers
- Open downhill from 6 am to 10 am, uphill from 10 am – midnight
- Cost: **HKD 240 M** (US 30M)



World's Longest Covered Escalator System

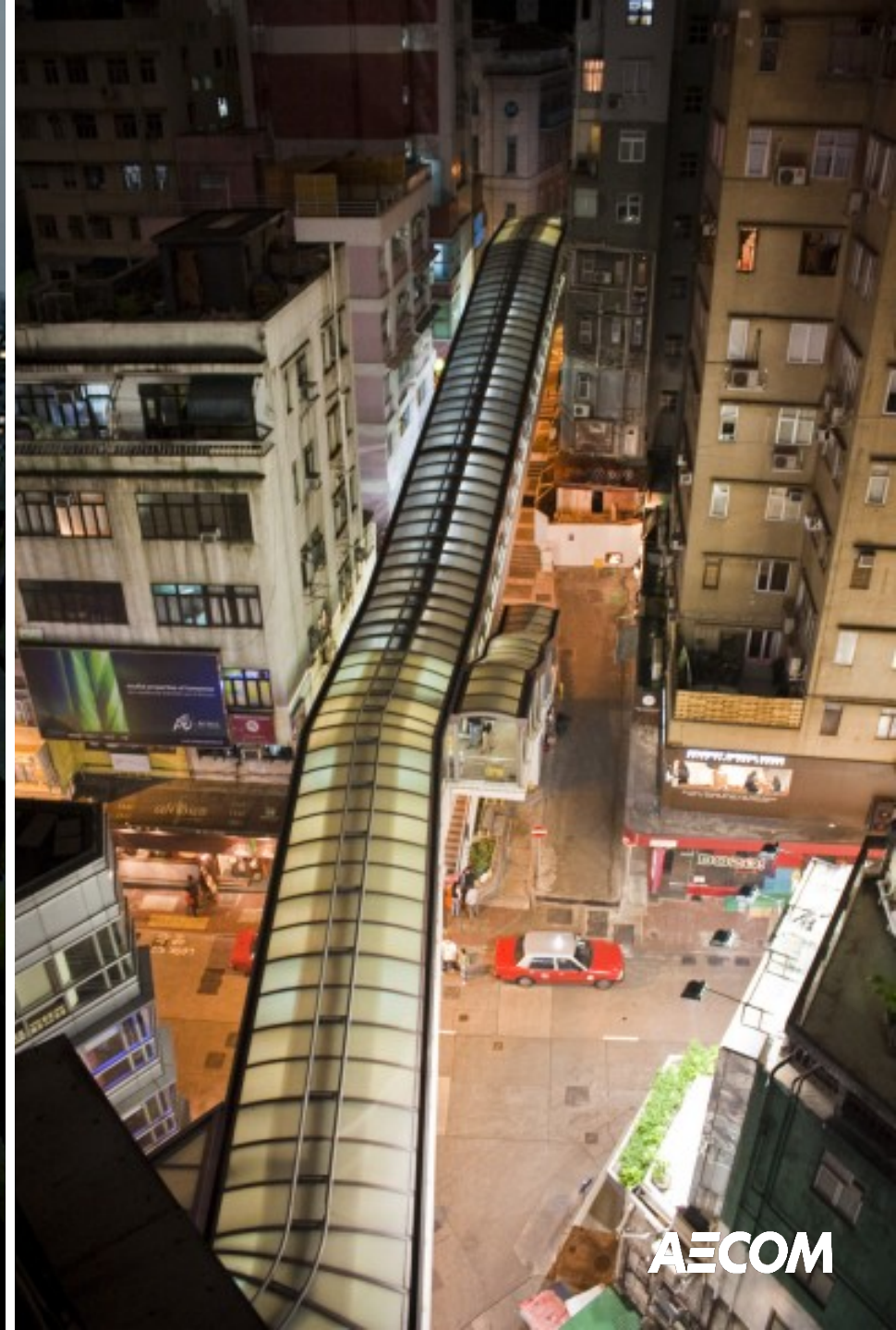
20 access points linking narrow alleys and major streets

- 800 m in distance
- 135 m in elevation
- 0.65 m per second
- Travel time: 20 min





Transformative Urban Regeneration
Unlocking Potentials Driving Growth
2016 ULI Fall Meeting



AECOM

Public Transit System



85,000
Pedestrians per day

“Coolest Commute in the World “
CNN, 2015

Created F&B and Commercial Activities on Multiple Levels



Enhanced development of Soho Area

Before and After



Created Cultural Impacts

Ma Ying Jeou
President of Taiwan, from 2008-2016



Created Cultural Impacts



Released in over 20 countries

ChungKing Express (1994)

Created Cultural Impacts



Over 1 b USD
Box Office

The Dark Knight: Batman (2008)

An aerial photograph of a dense urban skyline, likely in Asia, featuring numerous high-rise buildings. A dark, semi-transparent horizontal band is superimposed across the middle of the image, serving as a background for the main text.

Embrace the Existing



Embrace the Existing Engage the Community



Embrace the Existing
Engage the Community
Enliven the Economy and Environment



Embrace the Existing
Engage the Community
Enliven the Economy and Environment
Explore Innovative Solutions



AECOM

Built to deliver a better world

Transformative Urban Regeneration

Unlocking Potentials, Driving Growth

2016 ULI Fall Meeting

Sean Chiao

President, Asia President
AECOM

aecom.com