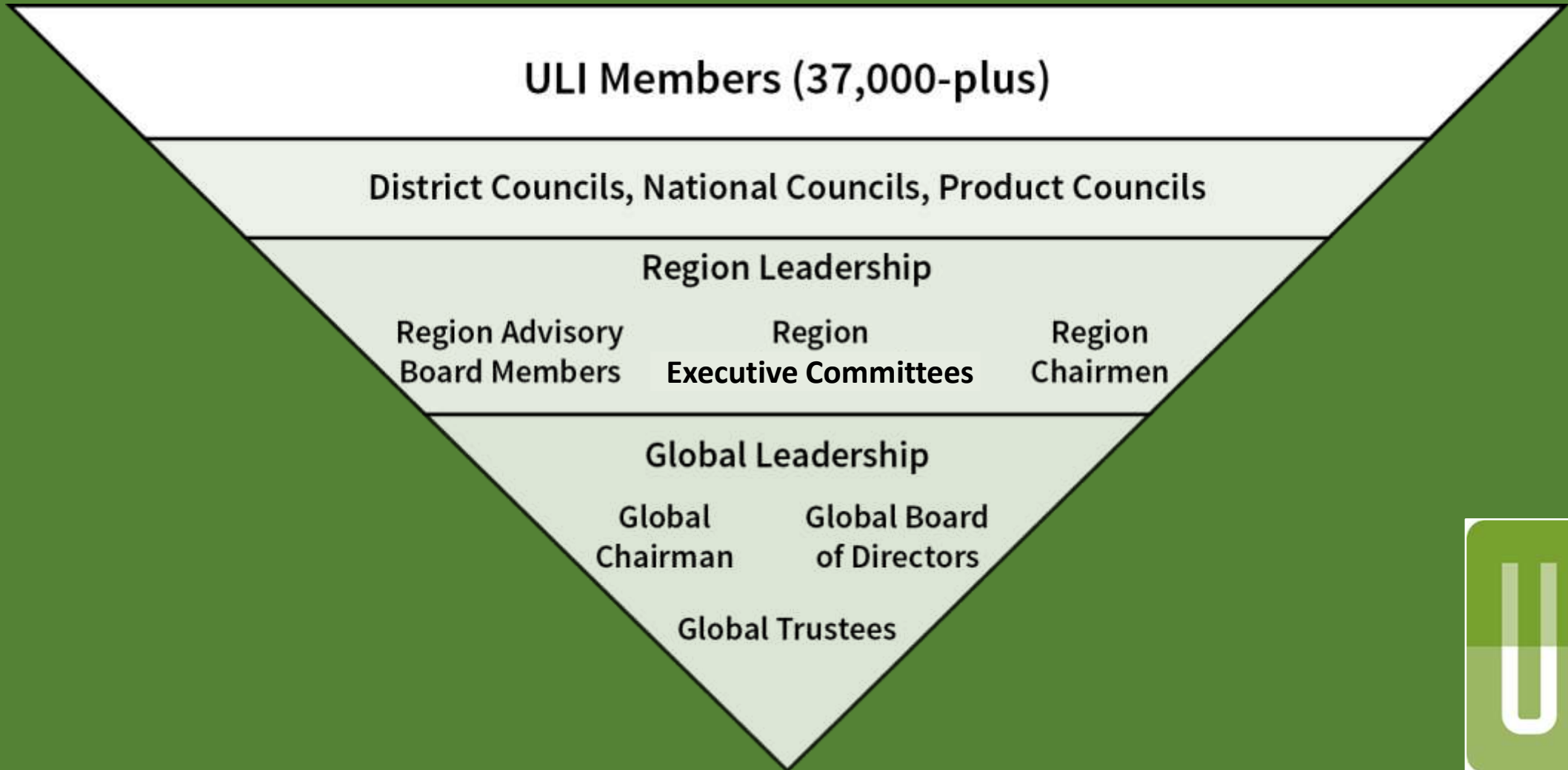


# ULI's Global Evolution Initiative

## Empowering, Engaging and Connecting Members



**ULI's Global Evolution Initiative  
Empowering, Engaging and Connecting Members**

**Global CEO Patrick Phillips**

<b>Americas Chief Executive</b>	<b>EMEA Chief Executive</b>	<b>Asia Pacific Chief Executive</b>	<b>ULIF President &amp; CEO</b>	<b>Global Governance Officer</b>	<b>Chief Financial Officer</b>	<b>Chief Marketing Officer</b>
<b>TBA</b>	<b>Lisette Van Doorn</b>	<b>John Fitzgerald</b>	<b>Kathleen Carey</b>	<b>Cheryl Cummins</b>	<b>Mike Terseck</b>	<b>Adam Smolyar</b>



**ULI's Global Evolution Initiative  
Empowering, Engaging and Connecting Members  
The Americas Executive Committee**

**Committee Chairman: Trish Healy, Co-Founding Principal, Hyde Street Holdings, LLC**

**Chief Executive, The Americas, TBA**

**Marty Burger, CEO, Silverstein Properties**

**Doug Lyons, Mng. Principal, Pearlmark Real Estate**

**Jack Chandler, Chairman, Global Real Estate, BlackRock**

**Jodi McLean, CEO, EDENS**

**Michael Covarrubias, Chairman, CEO, TMG Partners**

**Mark Noskiewicz, Partner, Goodmans, LLP**

**Lizanne Galbreath, Mng. Partner, Galbreath & Company**

**David O'Donnell, President, CEO, O'Donnell-Mexico**

**Mark Gibson, Executive Mng. Director, HFF**

**Wayne Ratkovich, President, The Ratkovich Company**

**Calvin Gladney, Mng. Partner, Mosaic Urban Partners**

**Bret Wilkerson, EVP, Hawkeye Partners, LP**

**Bill Lashbrook, SVP, PNC Real Estate**

**Margaret Wylde, CEO, ProMatura Group, LLC**

**Global Chairman and Global CEO Serve as Ex-Officio Committee Members**

**ULI's Global Evolution Initiative  
Empowering, Engaging and Connecting Members**

**We want and need your feedback!**

**Please send your ideas and questions to:**

**[globalevolutioninitiative@uli.org](mailto:globalevolutioninitiative@uli.org)**

