



November 2024 NEWSLETTER

The ULI Randall Lewis Center for Sustainability in Real Estate leads the real estate industry in creating buildings and places where people and the environment thrive.

Decarbonization

Healthy Places

Urban Resilience

Newsletter Contents

Click below to jump to a section (not working on mobile devices)

- [Spotlight on Impact](#)
 - [Upcoming ULI events \(Register now!\)](#)
 - [New ULI/Lewis Center Reports & Resources](#)
 - [Opportunities to Get Involved](#)
 - [Partner Reports and Resources](#)
 - [Partner Events](#)
 - [New in Urban Land Magazine](#)
 - [Did You Miss It?](#)
 - [News Links to Share](#)
-

Spotlight on Impact

The ULI Center for Sustainability is committed to helping members build more sustainable, thriving, and resilient communities. Together, we are continuing to make a difference.



“Connecting with others that are similarly positioned as us but have been able to achieve things (and face the same hurdles) gave us a lot of confidence and validation as to where we were in our own work.”

- Workshop participant

Our [FY24 Annual Impact Report](#) showcases the deep impact of the Center on members and communities. The Center's 37 publications reached over 37,000 readers. Over 19,000 people participated in more than 200 Center convenings, including 21 District Council programs supported by the Center. The Center convened impactful District Council Cohort programs, and helped host nine technical assistance panels. The impact report shows the high value of the Center's work for members and communities, and we are grateful for the spirit of ongoing collaboration and partnership that makes it possible.

Apply today to be the next ULI Health Leader!



Many of the lessons regarding community engagement and collaboration will be central to my approach for the rest of my professional life....The insights gleaned when connecting with Health Leaders in each meal and each break are only possible within a group of such diverse professional backgrounds and with such mutual respect; such is the magic and beauty of the Health Leaders Network."

- Health Leader Network participant

The [ULI Health Leaders Network](#) equips participants with the skills, actionable knowledge and creative collaborations for improving health, well-being, and social equity through the built environment. More than 250 people have participated in the program so far. We are now seeking participants for the 8th cohort of the program! Please apply by **Monday, November 18, 2024 at 11:59 pm ET** and find more details [here](#).

The upcoming program provides unparalleled opportunities for global engagement and collaboration. Two in-person forums will be held in the vibrant city of Miami, Florida, and the bustling metropolis of Hong Kong. Discover more about Cohort 7's recent [Fall Forum](#) in Vancouver and the application process [here](#).

Join the Lewis Center Sustainability Exchange!

Are you ready to dive deeper into the world of sustainability? Join us for the **Lewis Center Sustainability Exchange**, a series of engaging virtual sessions aimed at fostering learning and connection around the vital topics of healthy, resilient, and sustainable cities and communities. Hosted by Lewis Center staff, each 75-minute Exchange will feature expert guest speakers, Q&A, time for small group breakouts, and a larger group discussion with resource sharing.

Our first session will be on **Thursday, December 12th from 11am-12:15pm ET**: Maximizing Building Operations for Sustainability, Health, and Resilience. For full details, please visit www.uli.org/lcexchange. Register [here](#)!

Fall Meeting

It was wonderful seeing many of you at the ULI Fall Meeting in Las Vegas, and we missed those of you who weren't there. The Center organized and led 15 sessions, including the [Sustainability Forum](#) which focused on Water Smart development in Nevada. As one attendee said, "[It was] impressive to see the cooperation that can occur when so many parties agree when it is critical to do so."

Register Now!

Unlocking Decarbonization in Real Estate: From Ambition to Action

November 22, 2024 | 1:00 PM-2:00 PM ET

This webinar will explore how to reframe decarbonization as a project development opportunity rather than just a technical or financial challenge. Our industry experts will reveal how aligning the right technical strategies with comprehensive financial evaluations—maximizing incentives, tax credits, and financing—can turn decarbonization from a conceptual ambition into a reality. [Register now!](#)



CRREM North America Project Final Update

December 4, 2024 | 12:00 PM-1:00 PM ET

ULI, Lawrence Berkeley National Laboratory, and Carbon Risk Real Estate Monitor (CRREM) partnered on a project to make the North America CRREM curves more granular. This webinar will present the final set of more granular CRREM curves for the US and Canada and highlight key methodological changes, as well as discuss next steps for real estate decarbonization pathways in the region. [Register now!](#)



New ULI/Lewis Center Reports & Resources

[Insurance on the Rise: Climate Risk and Real Estate Investment Decisions](#)

This report explores why insurance costs are increasing and the effect of rising insurance costs on commercial real estate owners. It also examines strategies for securing affordable insurance coverage, investment considerations that may make a building or portfolio more attractive to insurers, and emerging trends and insurance impacts that could reshape markets.



[The Developer's Guide to Embodied Carbon: Intervention Points for Building Greener](#)

This report is an interactive resource that helps development teams identify opportunities for reducing embodied carbon at every stage of the development process from early visioning through a project's end of life.



[Fitting Out Spaces for Net-Zero: Best Practices and Examples to Engage Tenants in Sustainability](#)

This report delves into the increasing importance of fit-outs to either enable or compromise operational carbon performance, depending on factors like energy efficiency. The primer highlights how fit-outs can significantly reduce whole-life embodied carbon emissions, especially with lease cycles shortening.



Opportunities to Get Involved

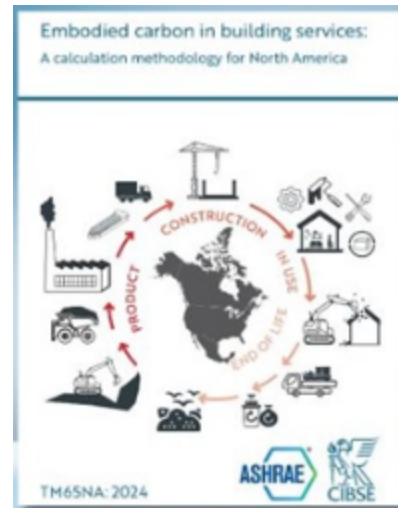
Join ULI's Water Wise Development Coalition!

ULI's [Water Wise Development Coalition](#) convenes land use and real estate professionals with public sector decisionmakers to advance water-smart real estate development and supportive policies. Those who are interested in participating can complete [this survey](#) and will be added to the invite list. It is free to participate in the coalition's quarterly virtual meetings and participants have a say in meeting topics.

Partner Reports and Resources

[Embodied Carbon in Building Services: a calculation methodology for North America](#)

The TM65 methodology outlines a critical approach to assessing embodied carbon in building services. This document complements TM65 by providing details on the embodied carbon impact of building services equipment installed in North America.



[The Time-value of Carbon](#)

"Is carbon saved today more valuable than carbon saved tomorrow?" As the built environment's transition to net zero gains traction, this new report unpacks this critical question to help inform better decision making on projects.



Partner Events

[CRE Risks and Rewards: Sweet Home Chicago and Beyond](#)

November 20, 2024 | Chicago, IL

Join the GARP Chicago Chapter for an insightful and timely discussion about current macroeconomic conditions as well as the impact of exogenous shocks such as work from home policies in the wake of COVID as well as climate change on the viability of commercial real estate.

[50% off All Island Press Print Books](#)

November 18-24, 2024

Island Press will be running an amazing sale from **Monday, 11/18/2024** until **Sunday, 11/24/2024**. The sale offers 50% off all Island Press print books and free shipping for orders over \$100. The half off price is only available at islandpress.org.

New in Urban Land Magazine

[How Las Vegas is Tackling Water Challenges: Insights from the 2024 Lewis Center Sustainability Forum](#)

Did You Miss It?

ULI Webinar: [Pumping Up Sustainability: Myth-Busting Heat Pumps in Commercial Real Estate](#) (Sep 20, 2024)

News Links to Share

- [Climate Change Is Killing Buildings in Slow Motion](#)
- [Rising Insurance Costs are another Storm Gathering over Commercial Real Estate](#)
- [The \\$20B US 'Green Bank' Program just Funded its First Project](#)

THE MISSION OF THE URBAN LAND INSTITUTE

Shape the future of the built environment for transformative impact in communities worldwide

OUR MISSION COMMITMENTS

CONNECT active, passionate, diverse members through the foremost global network of interdisciplinary professionals

INSPIRE best practices for equitable and sustainable land use through content, education, convening, mentoring, and knowledge sharing

LEAD in solving community and real estate challenges through applied collective global experience and philanthropic engagement

Urban Land Institute
2001 L St. NW, Suite 200
Washington, DC 20036
uli.org

Manage my account &
email preferences: my.uli.org

[Click here to unsubscribe](#)

Follow us:

