

An aerial architectural rendering of a school campus. The scene features several large, multi-story brick buildings with flat roofs, arranged around a central green courtyard. The courtyard contains a basketball court, a playground with colorful equipment, and a small pond. The campus is surrounded by a grid of streets with trees and sidewalks. The overall style is clean and modern, with a color palette dominated by earthy tones and greens.

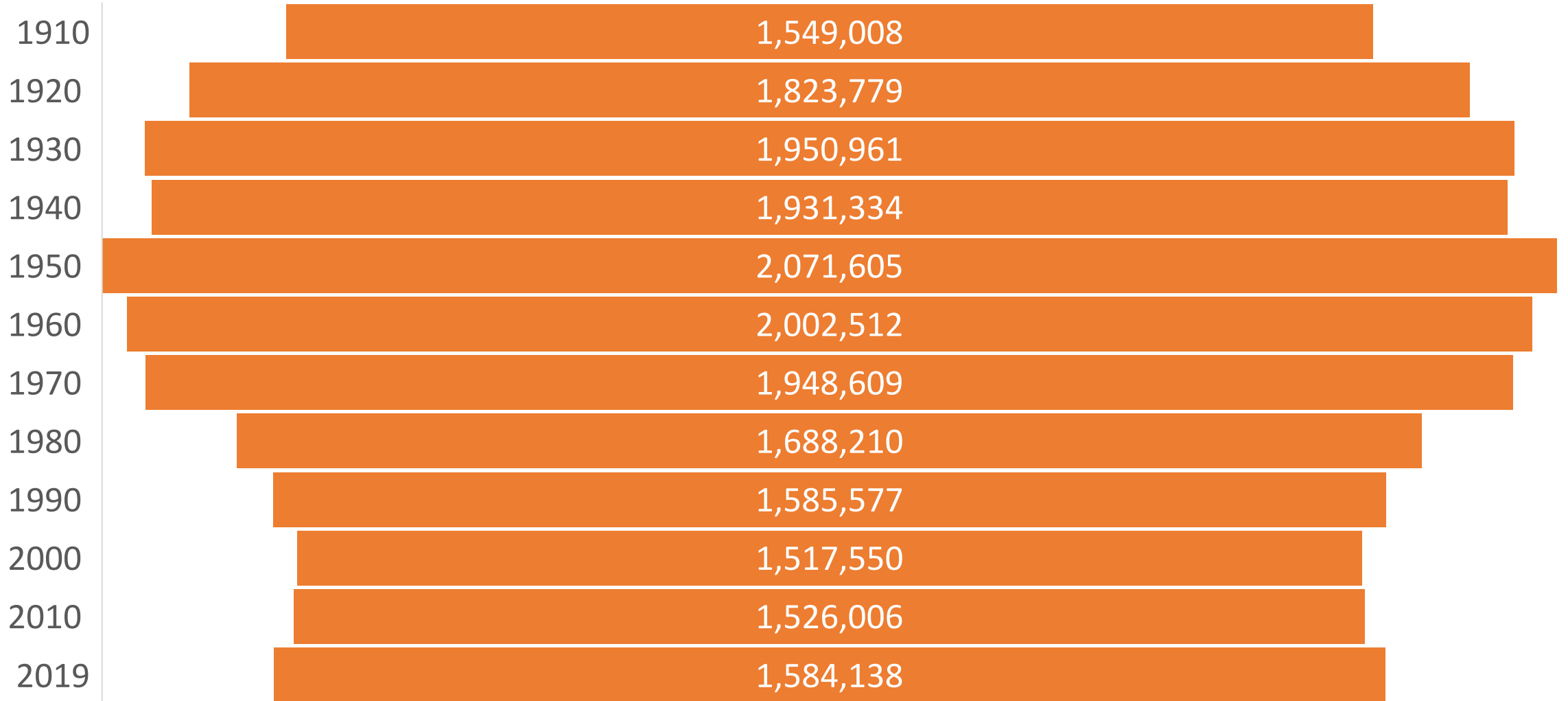
# The Toxic Trajectories of Philadelphia Public School Communities

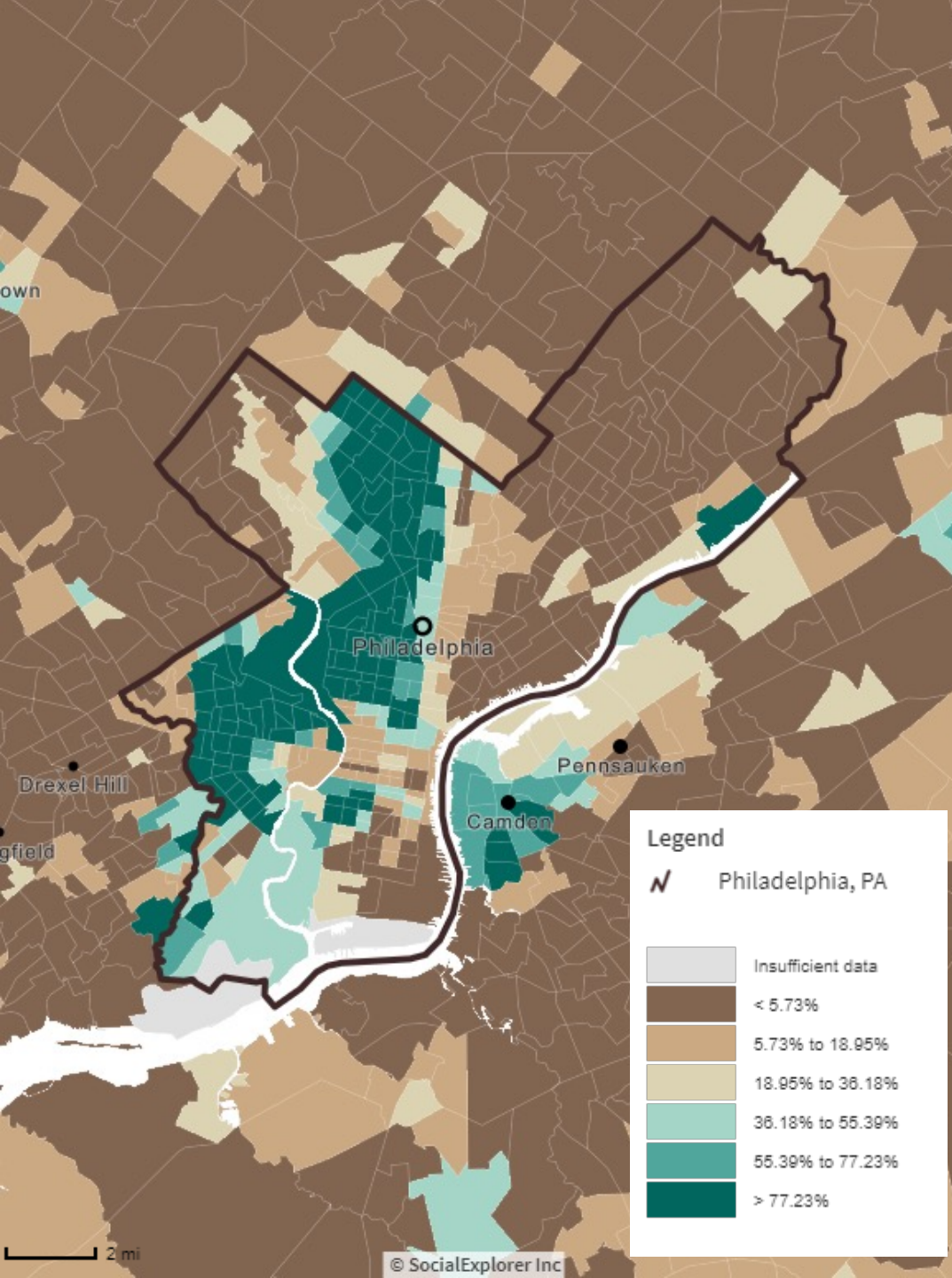
Akira Drake Rodriguez

Department of City & Regional Planning, Weitzman School of Design at the University of Pennsylvania

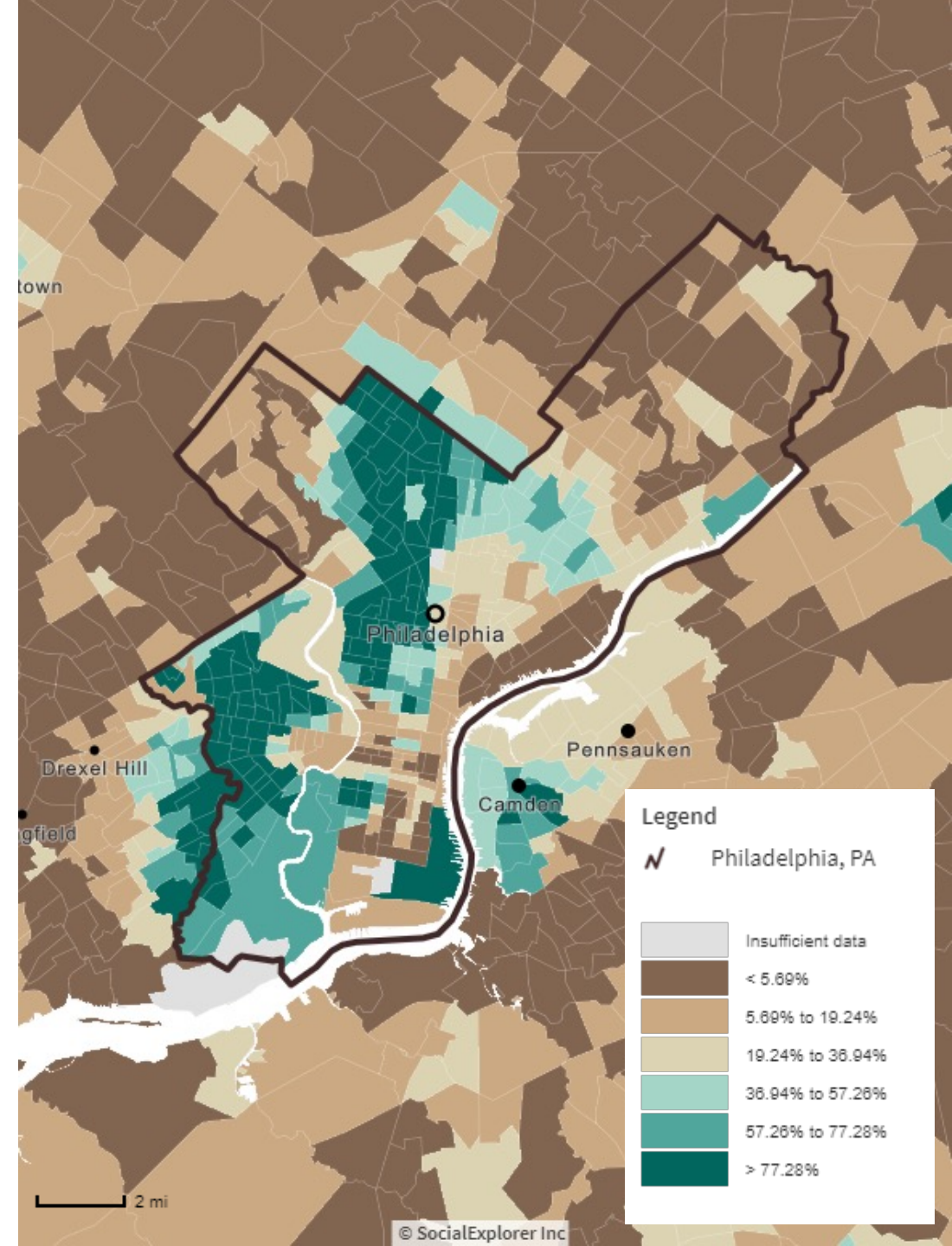
21 March 2024

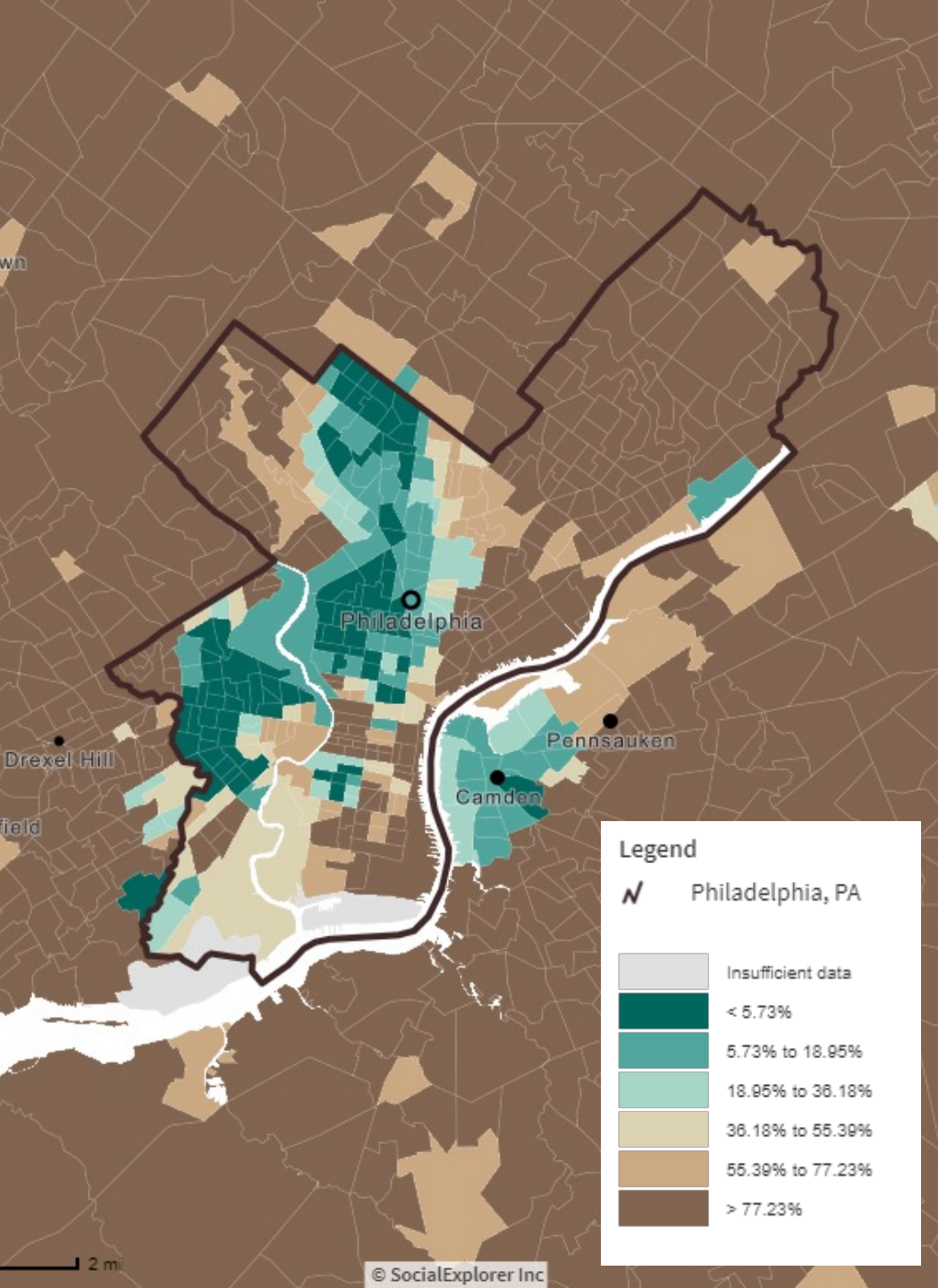
# Philadelphia Population Over Time



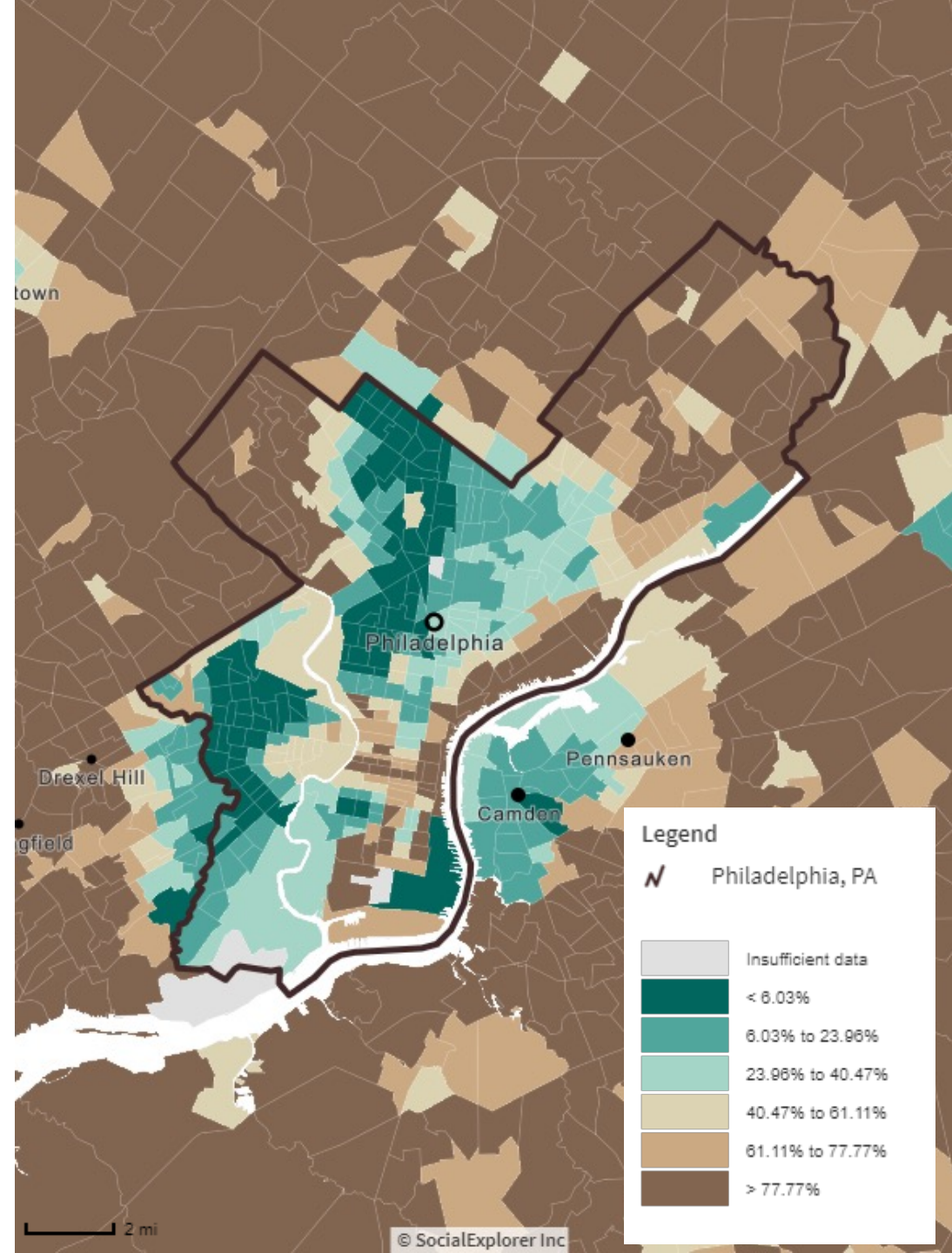


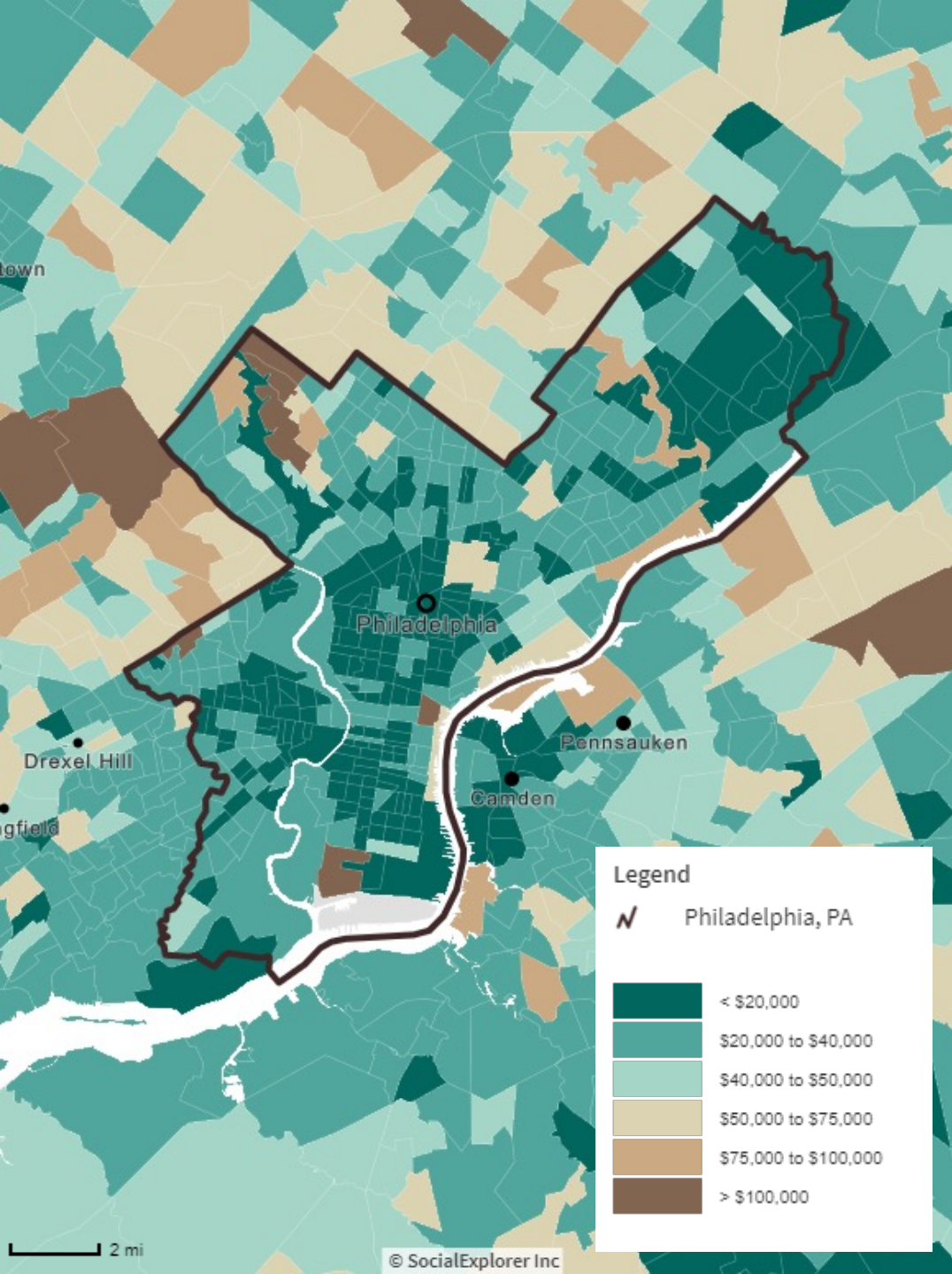
## % Black Population in Philadelphia 1990-2010



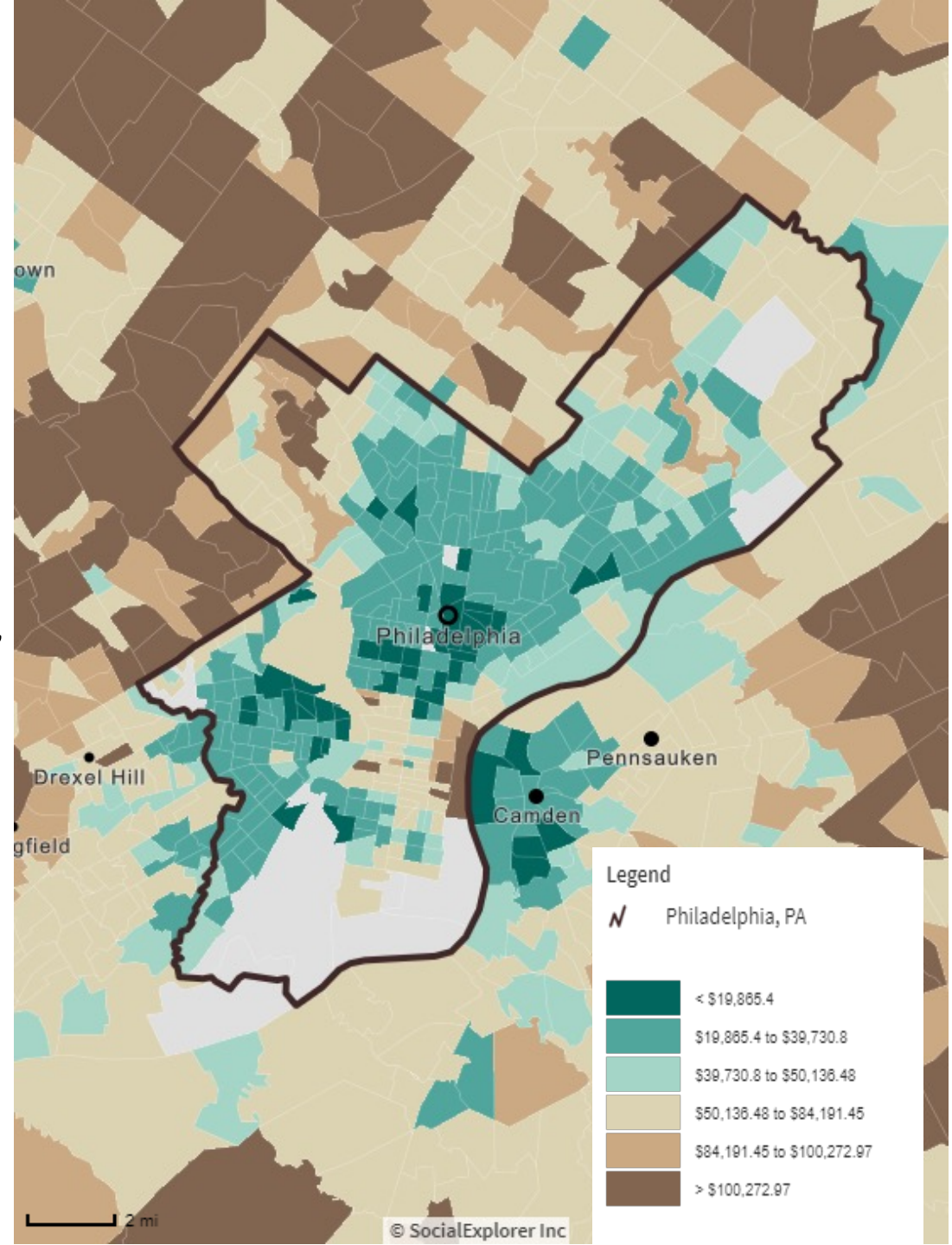


% White Population in Philadelphia 1990-2010

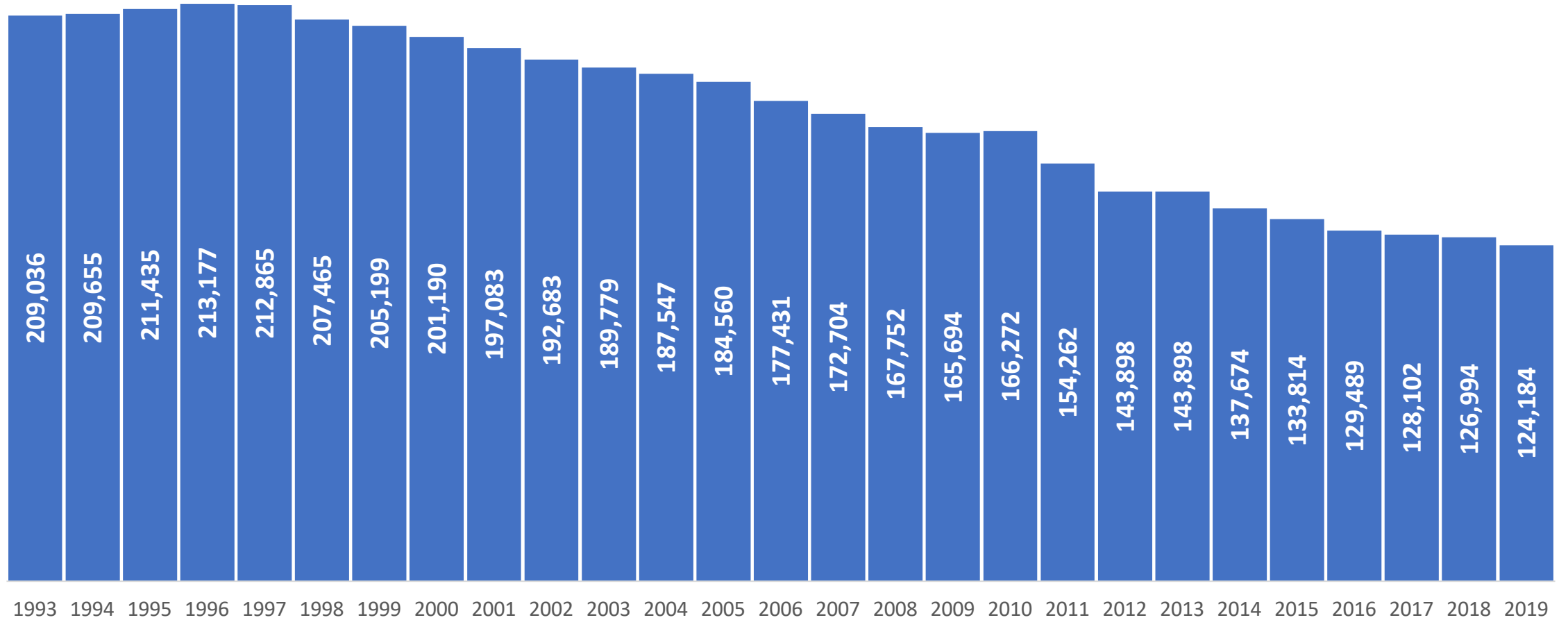


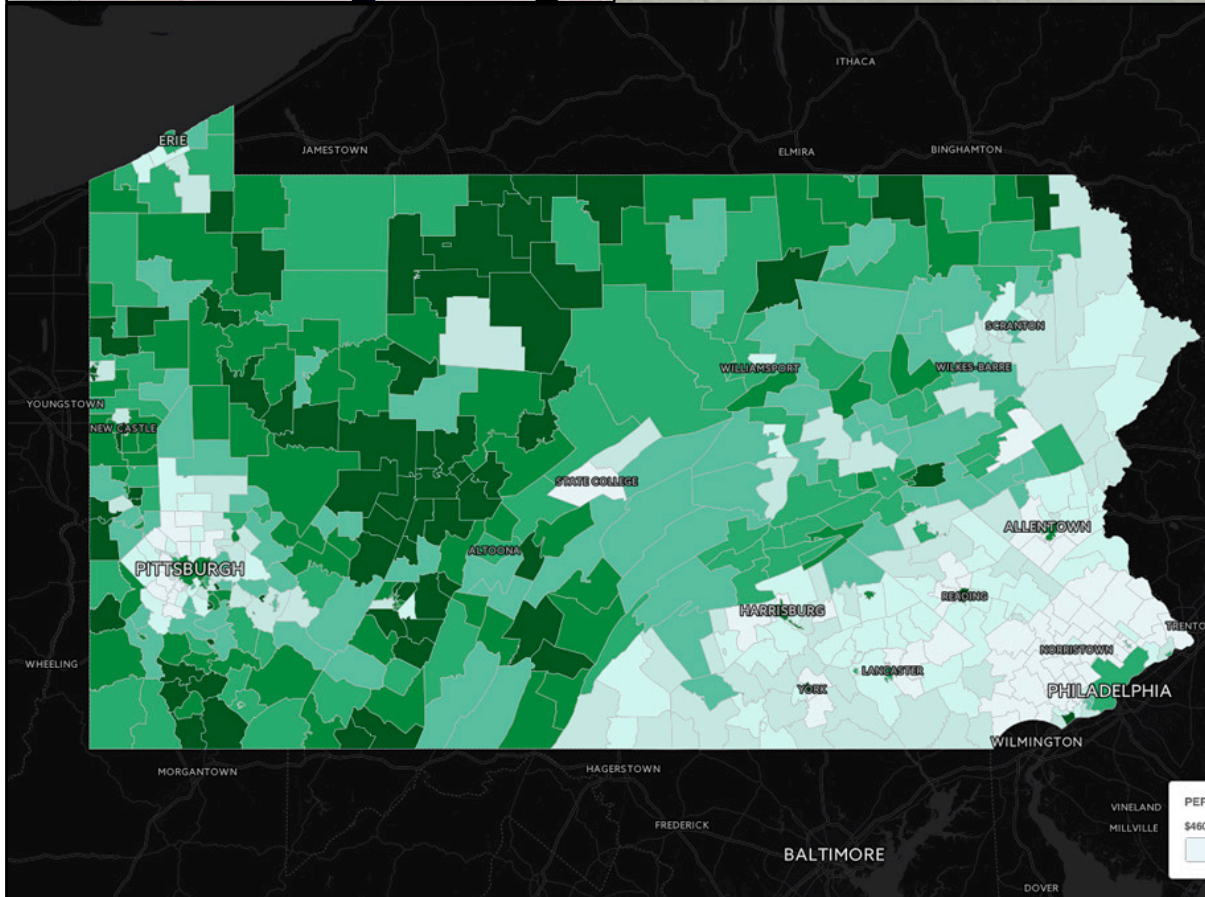


Median Household Income in Philadelphia, 1990-2015



## Philadelphia School District Enrollment (Not Including Charters) 1993-2019





Wicked  
Problems of  
K-12 Public  
Schools

# *Philadelphia Officials Vote to Close 23 Schools*



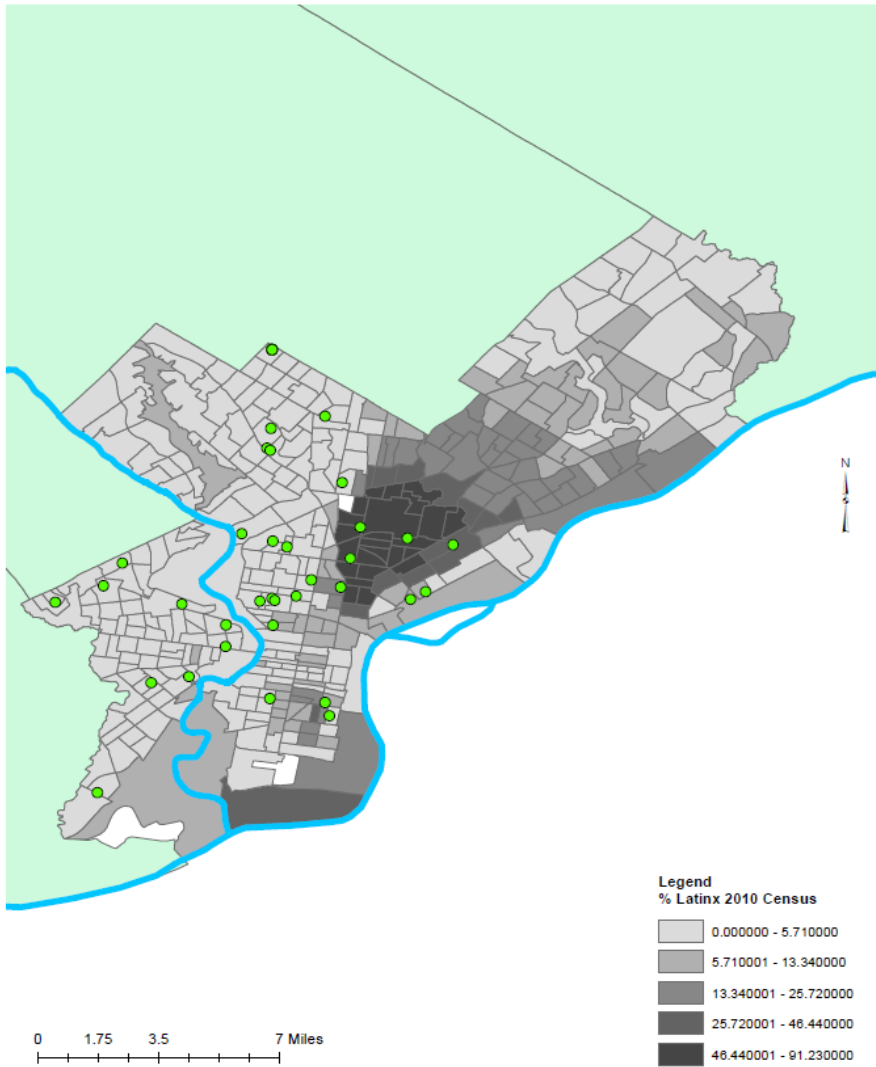
## School Closures of 2013

Students and staff from University City High School react after a vote that the school would be closed by the School Reform Commission. Tom Inquirer, via Associated Press

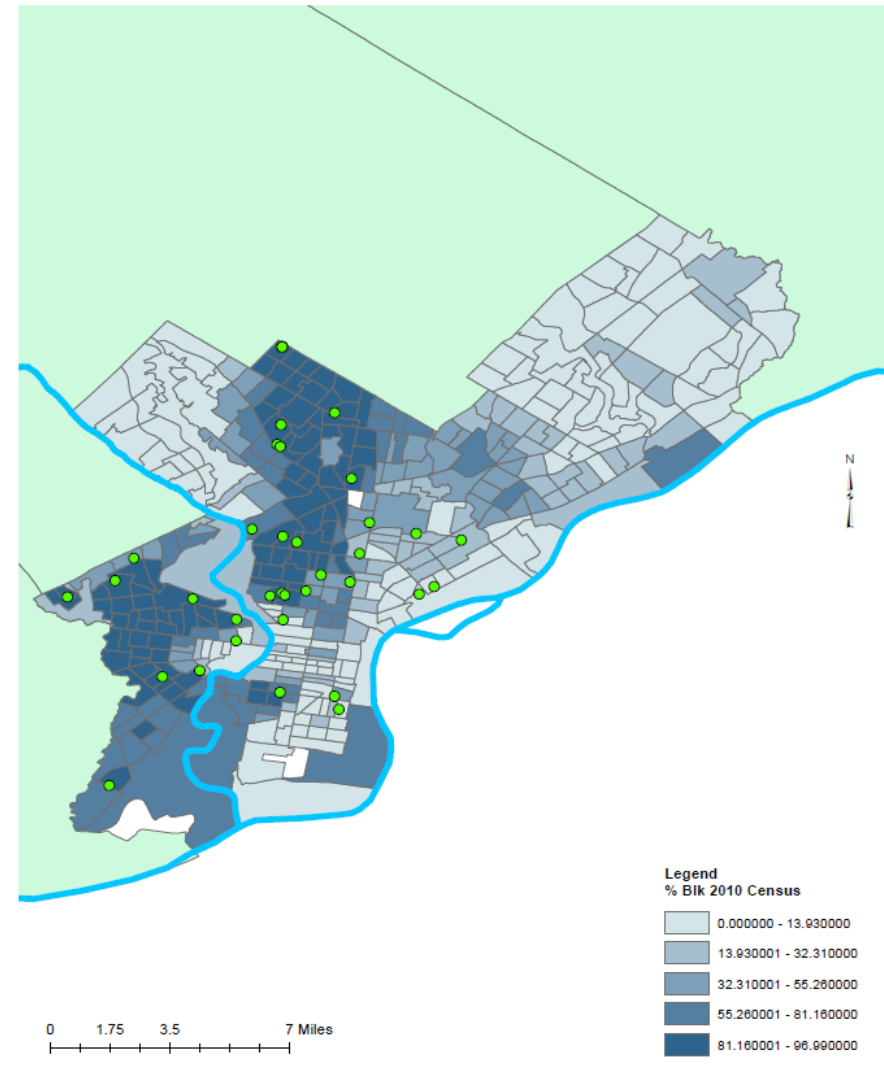
By Jon Hurdle



2013 Recommended School Closures and % Census Tract Latinx



2013 Recommended School Closures and % Census Tract Black



How can you help  
make safer learning  
environments?

Download the **Healthy  
Schools Tracker App**,  
and report unsafe  
conditions,

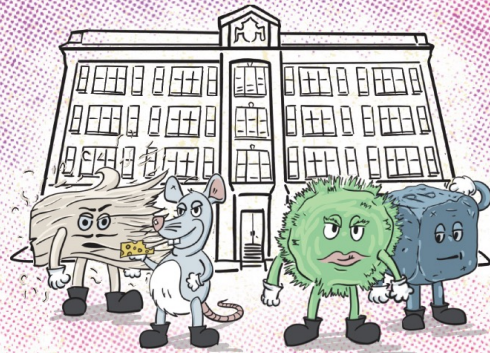


And you can follow  
**Parents United for  
Public Education** for  
more information!



This guide was produced with help from Parents United for Public Education, Our City Our Schools, and the Philadelphia Home and School Council. It was created by Akira Drake Rodriguez, Daniel Flinchbaugh, Jamaica Reese-Julien, Rebecca Yi, and Sarah Massey.

# Is your school **toxic?**



[A coloring guide to identifying  
hazards in your school]

Many of Philadelphia's public-school students are exposed to school buildings that can physically make them sick.

As school buildings age, they need major repairs and maintenance for students to be safe. Unfortunately, school administrations often put off repairs and maintenance.

**Lead and damaged asbestos pose a toxic risk to children. Mold and rodent feces are also dangerous asthma triggers.** All of these are far too commonly found in Philadelphia classrooms.

SCAN ME!



You can find  
detailed  
reports on  
**YOUR** school's  
hazards here!

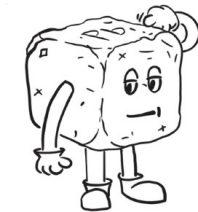
The main school toxins are...



**mold**



**asbestos**



**lead**



**rodents**



Hazel Ave

Hazel Ave

Hazel Ave

S 61st St

S 61st St

S 60th St

Cedar Ave

Cedar Ave

Cedar Ave

Cedar Ave

WC Bryant  
Promise Academy

Google

# Nine more Philadelphia school face overhauls or conversion to charter status

Three more low-performing city schools will be given to charter school operators in the fall, and six more will be overhauled under Philadelphia School District management, officials said Friday.



ADVERTISEMENT

Having a car shouldn't sink your budget.

**Save by  
booking  
on demand.**



# 'School nurse cuts killed my daughter": Laporshia Massey died because our priorities are wrong

Philly sixth-grader's death from asthma could have been prevented. Why do we cut nurses and add armed guards?

**JEFF BRYANT** PUBLISHED OCTOBER 18, 2013 11:43AM (EDT)

---



### Building/System FCI Tiers

Facility Condition Index (FCI) = $\frac{\text{Cost of Assessed Deficiencies}}{\text{Replacement Value}}$				
< 15%	15 to 25%	25 to 45%	45 to 60%	> 60%
Buildings				
Minimal Current Capital Funding Required	Refurbish Systems in building	Replace Systems in building.	Building should be considered for major renovation.	Building should be considered for closing/replacement.
Systems				
Perform routine maintenance on system	System requires minor repairs	System should be studied to determine repair vs. replacement.	System is nearing end of its life expectancy and should be considered for replacement	System should be replaced as part of the Capital Program

### Building and Grounds

	FCI	Repair Costs	Replacement Cost
<b>Overall</b>	<b>39.15%</b>	<b>\$19,187,219</b>	<b>\$49,015,121</b>
Building	39.73 %	\$18,796,497	\$47,304,730
Grounds	22.84 %	\$390,722	\$1,710,391

### Major Building Systems

Building System	System FCI	Repair Costs	Replacement Cost
<b>Roof</b> (Shows physical condition of roof)	43.82 %	\$515,848	\$1,177,237
<b>Exterior Walls</b> (Shows condition of the structural condition of the exterior facade)	00.00 %	\$0	\$3,478,214
<b>Windows</b> (Shows functionality of exterior windows)	53.52 %	\$908,306	\$1,697,172
<b>Exterior Doors</b> (Shows condition of exterior doors)	10.23 %	\$13,975	\$136,641
<b>Interior Doors</b> (Classroom doors)	90.06 %	\$297,878	\$330,765
<b>Interior Walls</b> (Paint and Finishes)	14.42 %	\$143,070	\$992,295
<b>Plumbing Fixtures</b>	12.86 %	\$163,835	\$1,274,057
<b>Boilers</b>	00.00 %	\$0	\$1,759,367
<b>Chillers/Cooling Towers</b>	40.73 %	\$939,475	\$2,306,873
<b>Radiators/Unit Ventilators/HVAC</b>	54.85 %	\$2,222,243	\$4,051,163
<b>Heating/Cooling Controls</b>	158.51 %	\$2,016,494	\$1,272,173
<b>Electrical Service and Distribution</b>	87.28 %	\$797,786	\$914,080
<b>Lighting</b>	07.19 %	\$233,117	\$5,268,070
<b>Communications and Security</b> (Cameras, Pa System and Fire Alarm)	32.51 %	\$397,964	\$1,224,113



Pine St

Pine St

Pine St

Osage Ave

Osage Ave

Osage Ave

401

403

405

407

409

411

415

417

419

421

423

6254

6250

6248

6246

6242

6240

6238

6236

6234

6232

6230

6228

6226

6224

6222

6220

6216

6212

6245

6243

6241

6239

6237

6235

6233

6231

6229

6227

6225

6223

6221

6219

6215

6213

400

402

404

406

408

410

412

414

416

6221 6219

6217

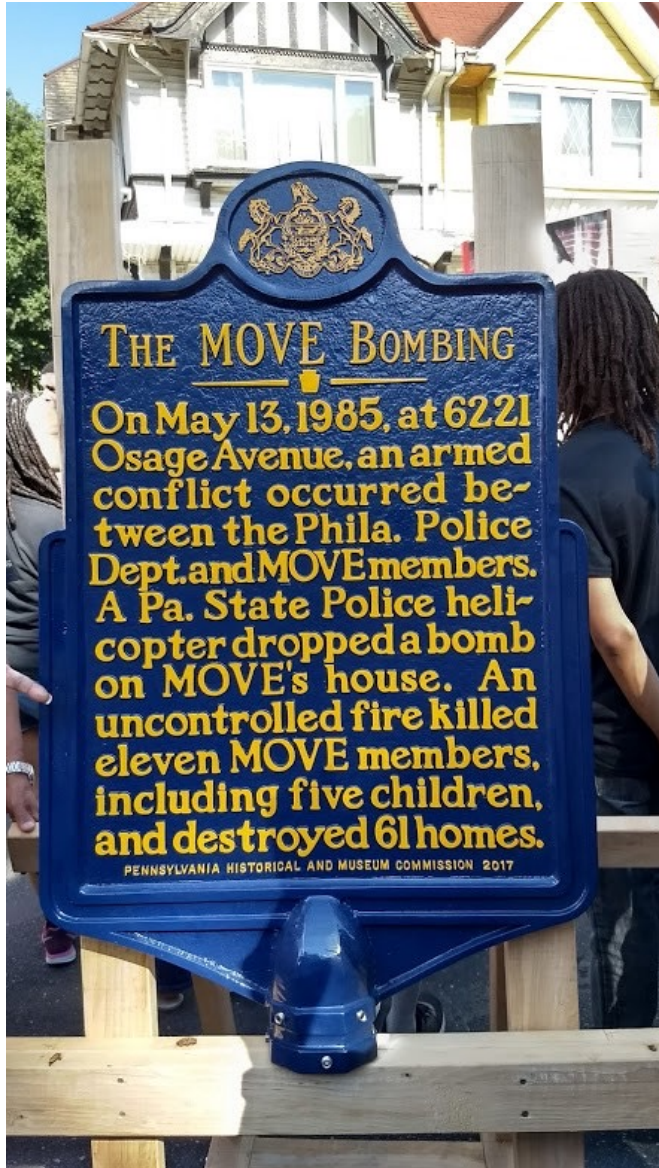
6215

6213

6211

6209


6207



The New York Times

## 35 Years After MOVE Bombing That Killed 11, Philadelphia Apologizes

A police helicopter dropped an explosive charge onto the roof of a rowhouse during an armed standoff in 1985. The resultant fire destroyed 61 homes in a West Philadelphia neighborhood.

 Give this article







CHOP Primary Care, Cobbs Creek

Cobbs Creek Recreation Center

S 63rd

Cobbs Creek Pkwy

Locust St

Locust St

S 63rd St

S Felton St

S Hirst St

Ve

# Clear-cutting woods for Philadelphia's Cobbs Creek Golf Course project angers local group and birders

The Cobbs Creek Foundation said about one-quarter of trees had to come down to restore the course to its original 1916 design and help control flooding and erosion.



ADVERTISEMENT

**SPRING  
SALE**

**RATES INCLUDE  
MEALS & MOST  
ACTIVITIES**

COMMUNITY

# Residents rally for safer options after neighborhood recreation center closes

The city says the Cobbs Creek Recreation Center has a broken sanitation line.



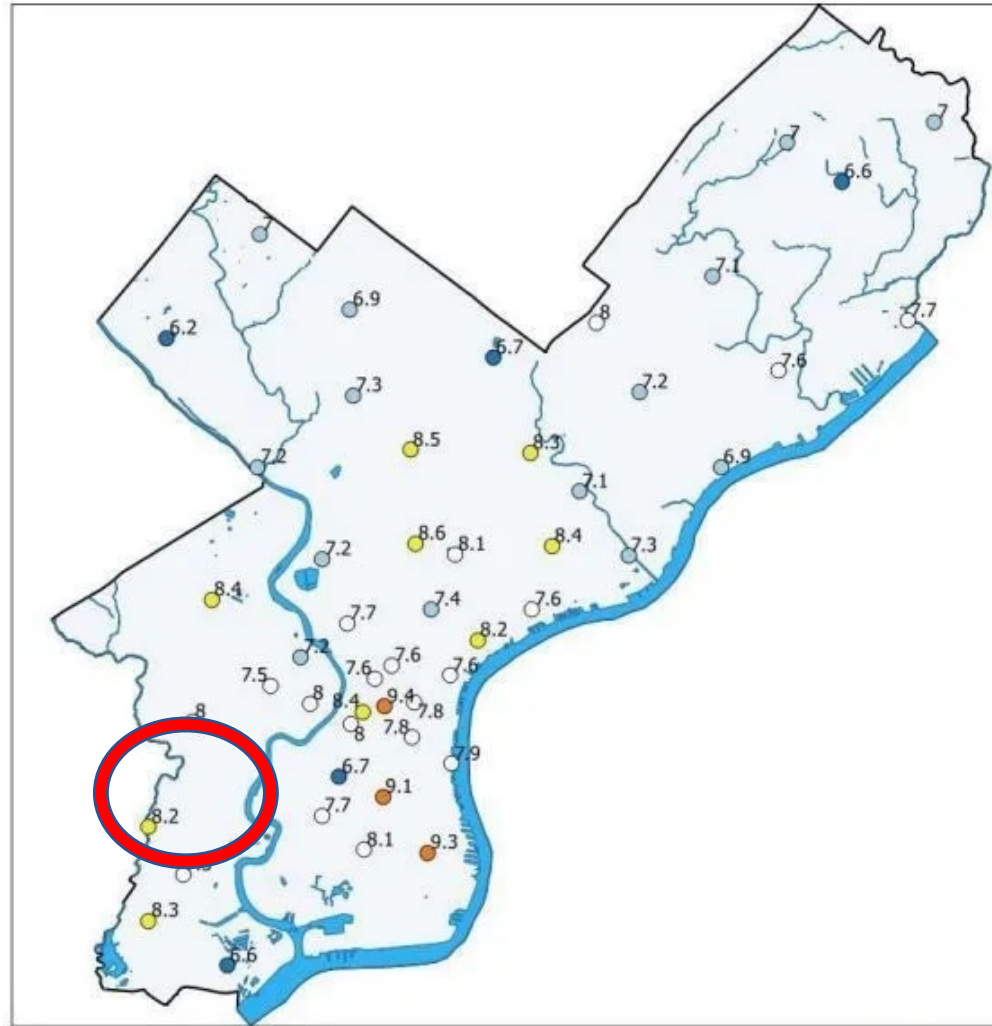
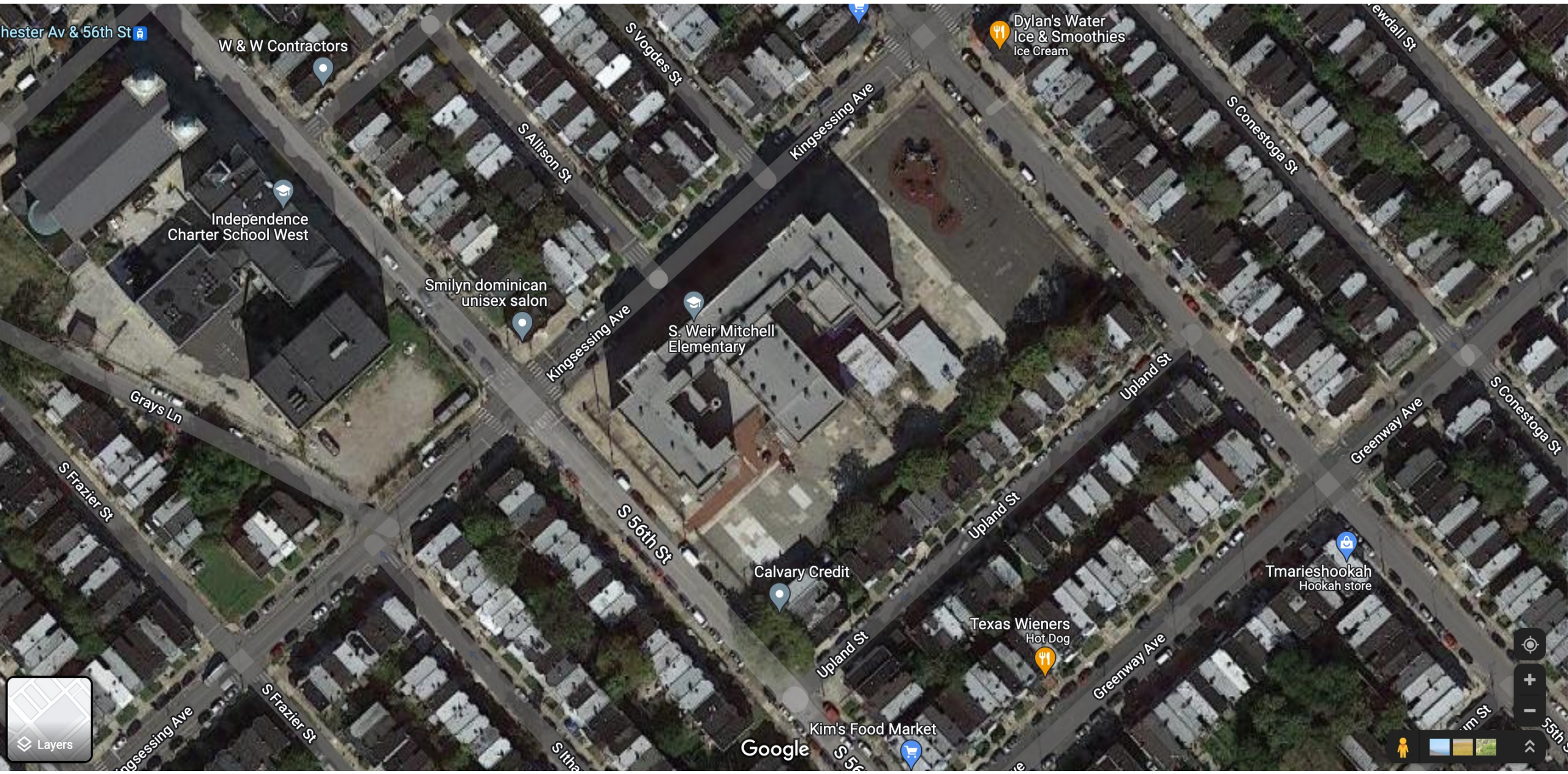


Figure 6. 12-month average PM<sub>2.5</sub> concentrations ( $\mu\text{g}/\text{m}^3$ ) at 50 sites (June 2019 – May 2020)



W & W Contractors

Independence  
Charter School West

Smilyn dominican  
unisex salon

S. Weir Mitchell  
Elementary

Dylan's Water  
Ice & Smoothies  
Ice Cream

Grays Ln

Kingsessing Ave

Upland St

Greenway Ave

S Conestoga St

S Frazier St

S 56th St

Upland St

Tmarieshookah  
Hookah store

Calvary Credit

Texas Wieners  
Hot Dog

Upland St

Greenway Ave

Kim's Food Market

Google

S 56th St

im St

55th St

Layers

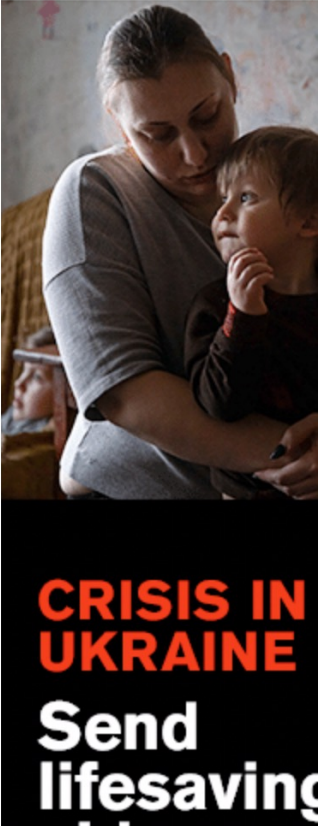
# Gun violence is growing. One Philly school community says enough is enough.

“At the end of the day, if we can’t keep people alive, I don’t know what else matters,” Councilmember Jamir said at a rally against gun violence in Southwest Philadelphia.



Kids from Mitchell Elementary enjoy water ice while families and community members gathered for a rally against gun violence in Southwest Philadelphia. A shooting happened in broad daylight ... [Read more](#)  
HEATHER KHALIFA / Staff Photographer

ADVERTISEMENT



FIRST DAY OF SUMMER VACATION!

A FEW DRAWINGS.

CAR'S ENGINE.

GAME.

JUMPS ROPE.

CLIMBS MOUNTAIN.

WALKS FENCE.

HITCHES RIDE.

PLAYS VIDEO GAMES WITH JEFFY.

CLIMBS TREE.

WRESTLES BARFY.

RIDES SKATEBOARD.

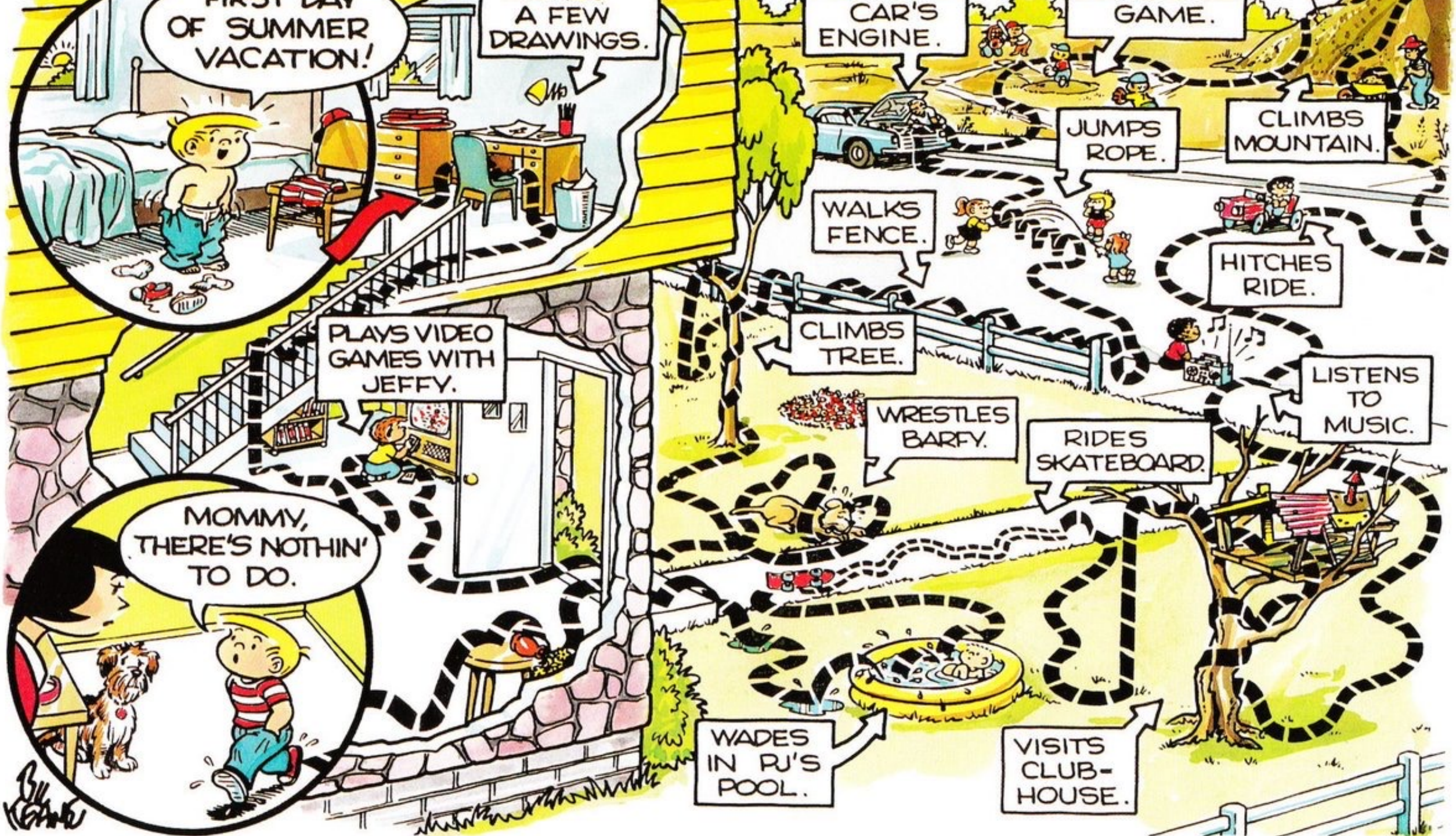
LISTENS TO MUSIC.

MOMMY, THERE'S NOTHIN' TO DO.

WADES IN PJ'S POOL.

VISITS CLUB-HOUSE.

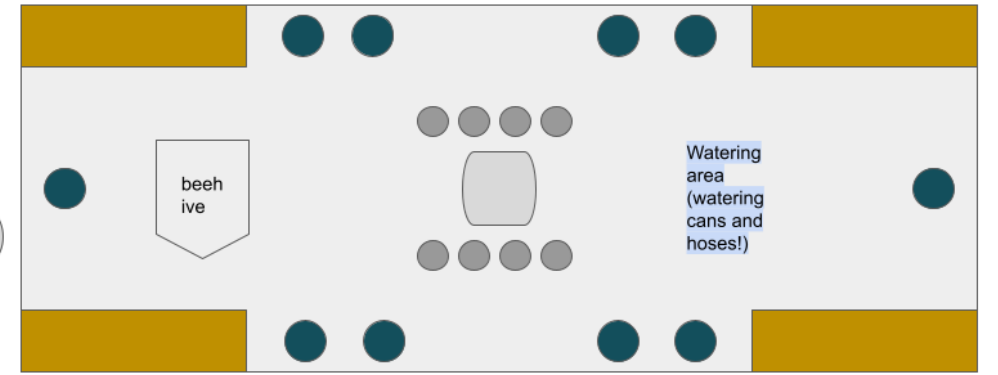
Bill Kropfle



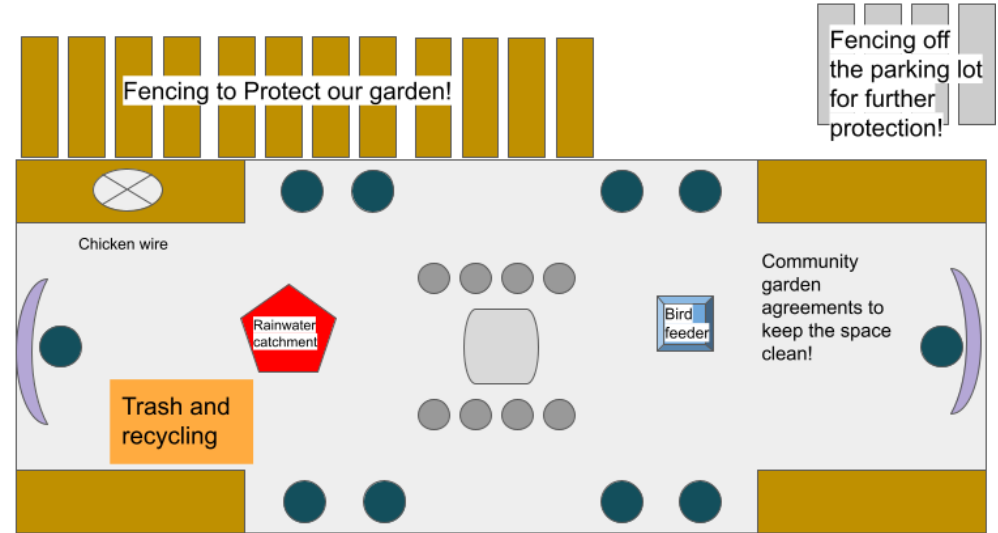


This space should start off fenced for protection! To only be unlocked during specific programming and so the students can enjoy it primarily first!

- Wooden Garden Beds
- Grow Bag
- Metal Garden Bed
- Moveable Seating



- Wooden Garden Beds
- Grow Bag
- Metal Garden Bed
- Moveable Seating



- Composting should start with just the garden scraps! In the cafeteria, there would be a learning curve (with recycling AND composting)
- How do we organize and welcome volunteers?







I've learned that the Penn students are trying to make a garden. They are trying to make a garden for our school. It is to make sure that our school gets healthy fruits and veggies. It will also help our community get healthy veggies.

have learned that it is cheaper to buy seed packets. It is cheaper and you get more in the packets or cheap. If you go to a grocery store you will pay more for one vegetable. If you just buy seeds and grow your own garden you can pay less and be healthy.

I learned that there are people who are making their gardens for their communities. They are making a garden and selling the vegetables for cheap. They are even letting more people help make the garden bigger. A lot of people are helping people by making gardens.

**You should get in the program because you will have fresh veggies. You could even help your community. You will save more money if you do join the program.**



September 2019

Vol 1 Issue 21

NEWSLETTER

# FLOATING FARMS

Made by Jada Griffin



By Torri Mckin

## SCHOOL NEWSLETTER

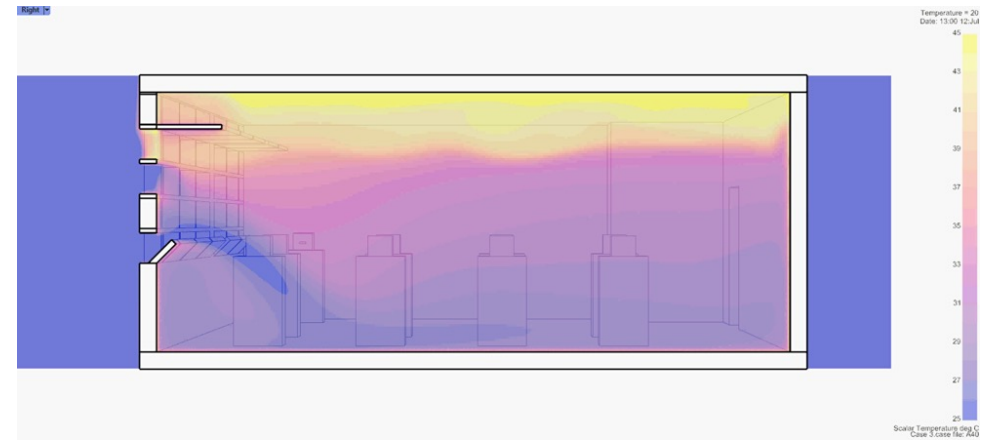
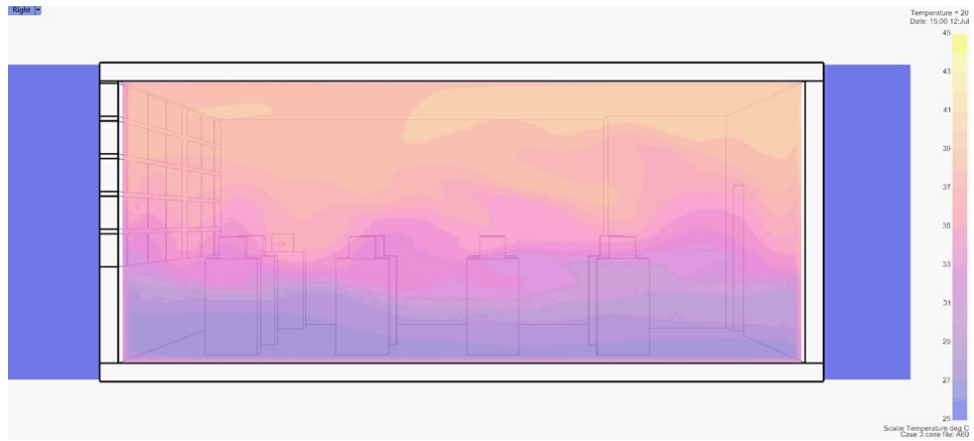
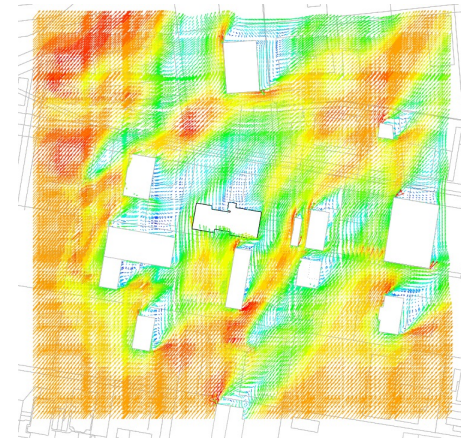
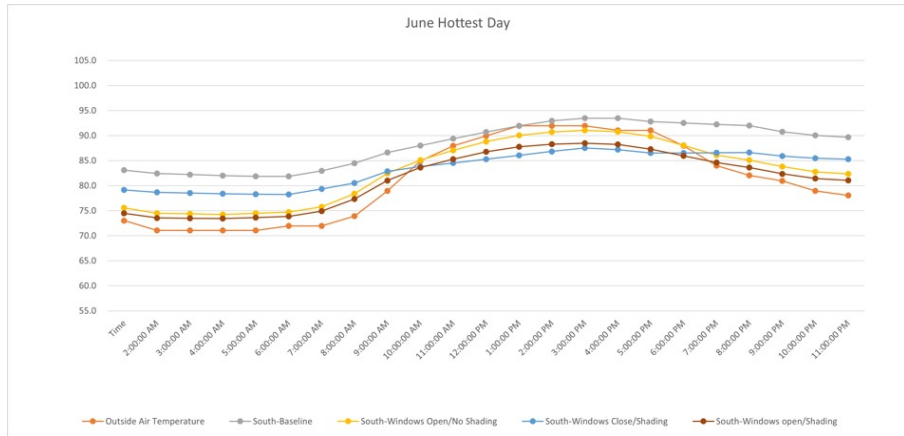
Global warming is destroying people and animals' homes. The reason is that there are houses near the sea that are flooding right now because of global warming. As a result, families are being forced to leave their own homes. There are even big cities that will be flooded by the end of the century. If the sea level keeps rising, so will the number of people who will be displaced. Companies in the future if this keeps happening will have lost their homes since global warming started but animals have too. Some of their habitats near the sea have been destroyed because of sea-level rise. People and animals are going to lose their houses sooner or later if we don't stop global warming.

Global warming is when the earth's atmosphere gets warmer than it should be. Livescience.com says that this rise in heat is caused by humans. Global warming is something people have known about since the 1980's. People made greenhouses that used toxic gas to go into the air. Global warming is caused by the burning of fossil fuels that release greenhouse gases into the atmosphere, which trap warmth from the sun and increase surface and air temperatures." Fossil fuels are making the earth's atmosphere warmer than it should be. The greenhouse effect is a natural interaction between the radiation from the sun and the earth's atmosphere, so it makes the atmosphere heat up.

However, you can stop global warming. You can stop global warming by planting trees. By planting trees they remove a lot of carbon dioxide from the atmosphere. Northwestern.edu states "Simply turning off your television, DVD player, stereo, and computer when you're not using them, will save you thousands of pounds of carbon dioxide a year." Turning off electronics can also help stop global warming.

Not to mention, but if you stop driving you can reduce the amount of carbon dioxide in the atmosphere. The gases from your car enter the atmosphere causing global warming. Northwestern.edu claims "You'll save one pound of carbon dioxide for every mile you don't drive. So just take a bike or walk! You will need to check your tires and make sure they are inflated properly before you decide to drive. Gas from the tires can stay in the atmosphere if it is under-flattened or over-flattened. Northwestern.edu claims "Keeping your tires properly inflated can improve your gas mileage by up to 3 percent."

By all means we should start and try to live our lives to help put an end to global warming. We should try to plant more trees and take breaks off our cars and use cars then it will decrease the carbon dioxide in our atmosphere. Then we won't need to worry about global warming causing sea levels to rise. Everyone won't have to worry about Global Warming if we just sacrifice a little time off our day for our planet.





## Vulnerability Index

This vulnerability index can help public school stakeholders identify areas where improvements are needed by prioritizing risks to individual schools and the district as a whole. This assessment identifies factors that impact a school's condition (e.g., facility condition, school enrollment and closure risk, and neighborhood demographics) and weighs them based on their importance. Specific considerations that impact school vulnerability include school utilization, capacity, building age, recent closures, student enrollment, and neighborhood demographics such as race and income. An analysis model is then used to assess which schools are most vulnerable.

The data is supplemented by an explanatory data dictionary, which describes all relevant data points used for the calculation of the index, along with the sources. A majority of the data has been sourced from the Philadelphia Healthy Schools data, the Philadelphia School Districts website, and American Community Survey data from 2020.

Based on the findings of the vulnerability assessment, a prioritized action plan was created. Specialty schools were screened out as they receive preferential consideration for serving special populations from across the city and not specific neighborhoods. Predictably, it was found that many minority and low-income neighborhoods were at risk of school closures. The school vulnerability map can be used to identify at-risk schools in a timely manner and mitigate closures and the reuse of school buildings.



**FIGHT KIT**  
Public Schools as Infrastructure



# PEOPLE'S FACILITIES PLAN WORKBOOK





## The Urban Climate Finance Network

We are an open international network of more than 50 scholars from institutions in 22 countries around the world

