

# About PHMC

Founded in 1972

## VISION

PHMC envisions a healthy community for all.

## MISSION

PHMC is a nonprofit public health institute that creates and sustains healthier communities.

## APPROACH

PHMC uses best practices and evidence-based guidelines to improve community health through direct service, partnership, innovation, policy, research, technical assistance and a prepared workforce.

*PHMC is the public health institute for Pennsylvania and Delaware and the Pennsylvania Public Health Association.*



# PHMC Approach

**We provide therapeutic, holistic and culturally sensitive programs and services.**

**We operate in specific districts, while providing access to vulnerable communities citywide.**

**We serve neighborhoods and communities across the city and region.**

PHMC operates more than **120 programs**,  
**125 research studies** and  
a network of subsidiary organizations.



**NATIONAL  
NURSE-LED CARE  
CONSORTIUM**  
a PHMC affiliate



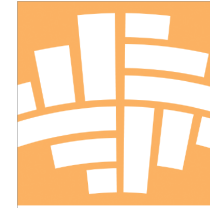
**INTERIM  
HOUSE INC.**  
a PHMC affiliate



**JOSEPH J.  
PETERS  
INSTITUTE**  
a PHMC affiliate



**HEALTH  
PROMOTION  
COUNCIL**  
a PHMC affiliate



**PUBLIC  
HEALTH FUND**  
a PHMC affiliate



**TURNING  
POINTS FOR  
CHILDREN**  
a PHMC affiliate



**THE BRIDGE**  
a PHMC affiliate



**THE CENTER  
FOR  
AUTISM**  
a PHMC affiliate



**CARSON VALLEY  
CHILDREN'S AID**  
a PHMC affiliate



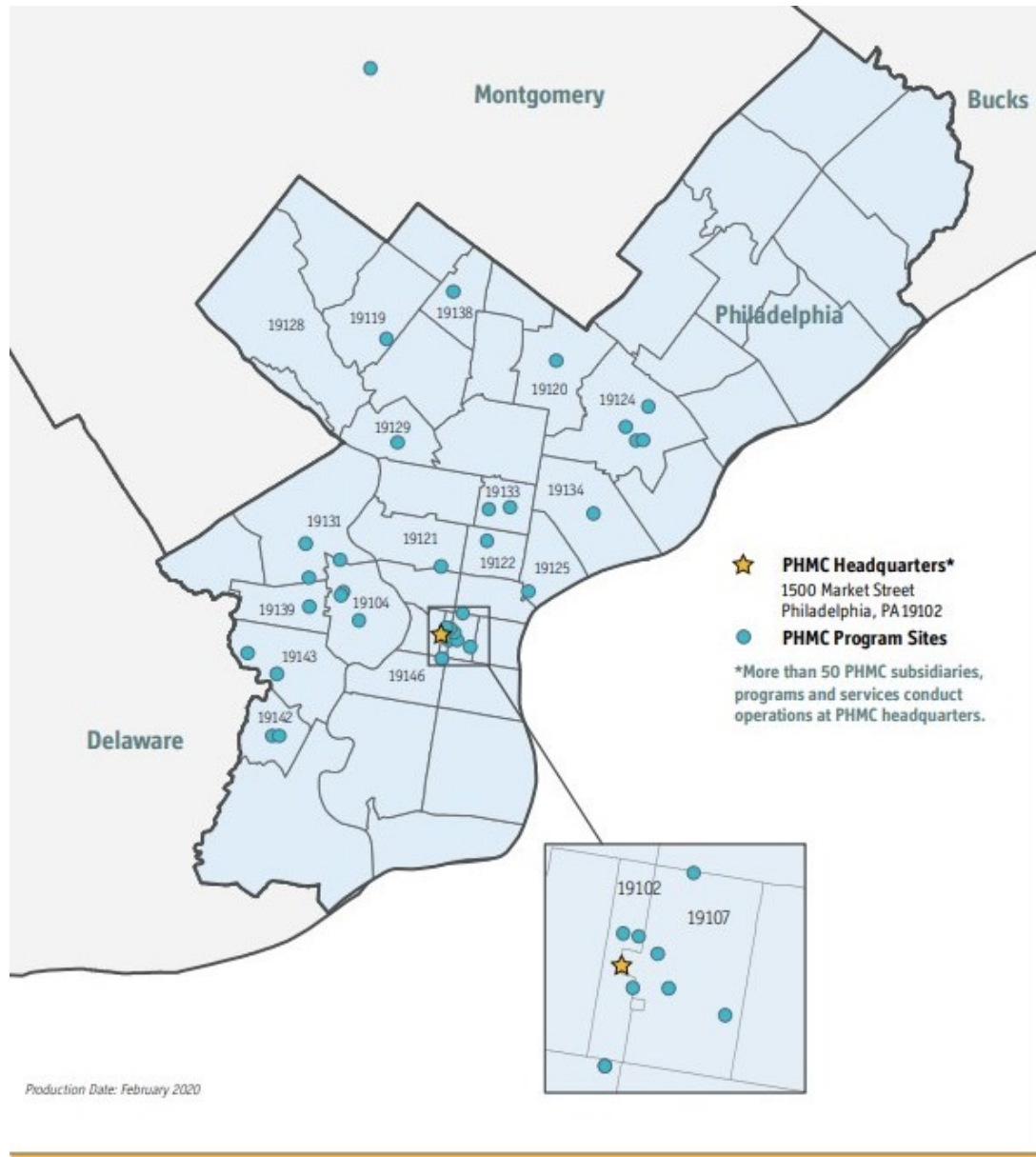
**VNA  
PHILADELPHIA**  
a PHMC subsidiary



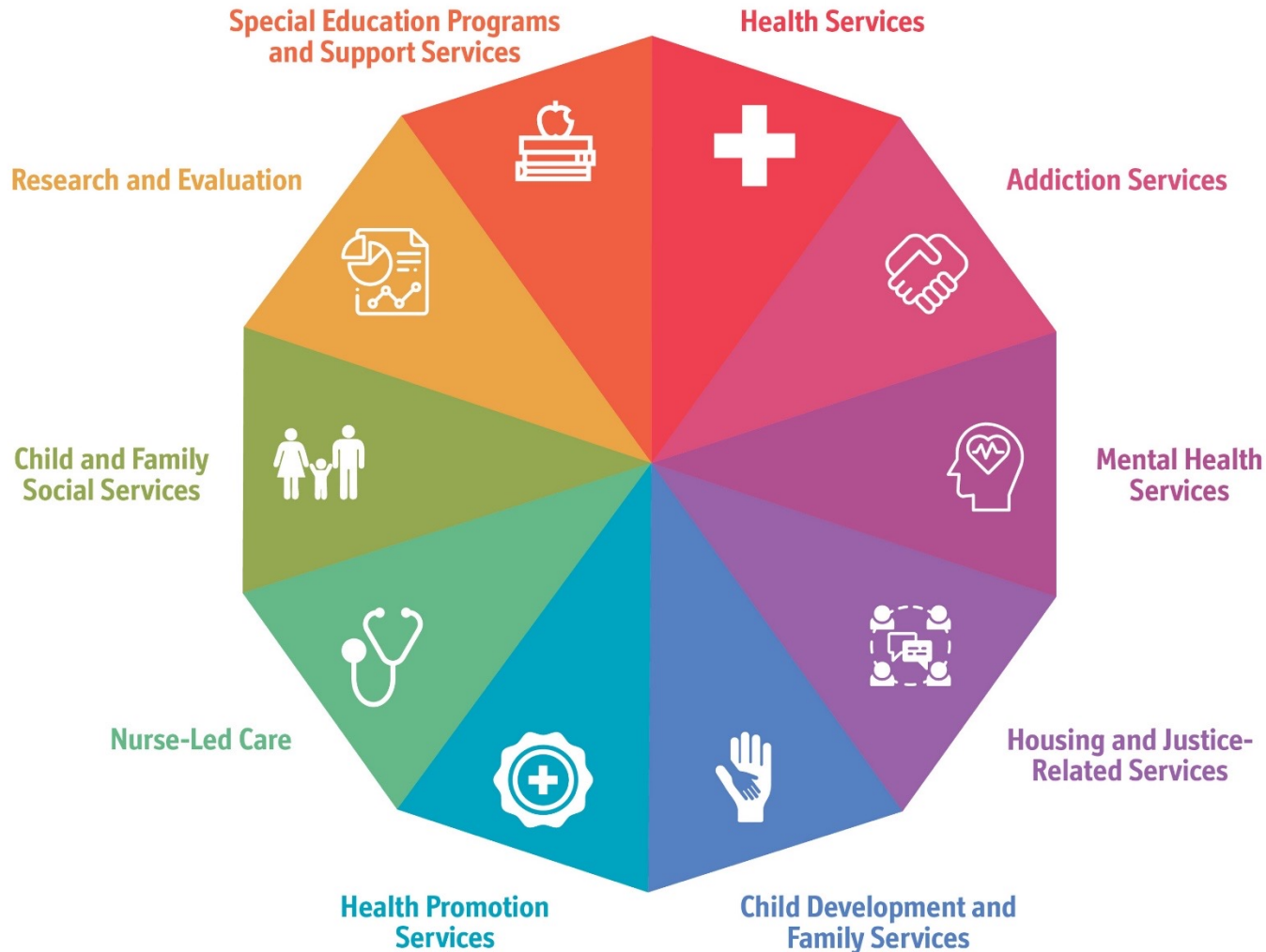
**FAIRWOLD  
ACADEMY** at PHMC



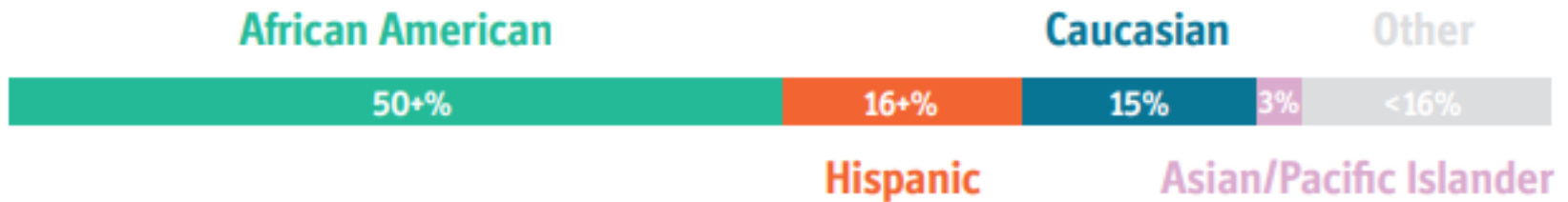
**PENNSYLVANIA PUBLIC  
HEALTH ASSOCIATION**



# PHMC Continuum of Care



# PHMC: Who We Serve



90% of the people PHMC serves are at risk.



On average, each client is served by at least 2 PHMC services.

# PHMC: Who We Are

## Staff Demographics

- **70%** of PHMC employees are **BIPOC**.
- **76%** of PHMC employees are **women**.
- **64%** of PHMC employees are **Philadelphia residents**.

## Senior Team

- **40%** of PHMC Senior Staff are **BIPOC**.
- **64%** of PHMC Senior Staff are **women**.
- **52%** of PHMC Senior Staff are **Philadelphia residents**.

## Board Demographics

- **67%** of PHMC board members are **BIPOC**.
- **33%** of PHMC board members are **women**.
- **67%** of PHMC board members are **Philadelphia residents**.

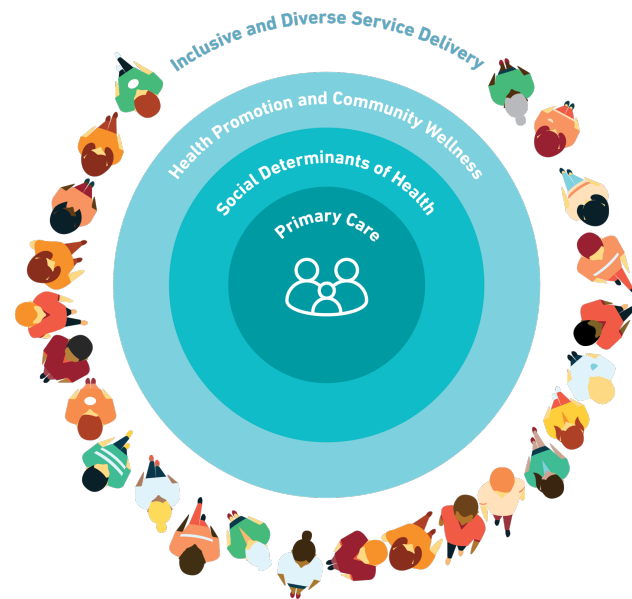
## Executive Committee

- **67%** of PHMC executive committee are **BIPOC**.
- **50%** of PHMC executive committee are **women**.
- **67%** of PHMC executive committee are **Philadelphia residents**.



# PHMC Public Health Campus on Cedar Overview

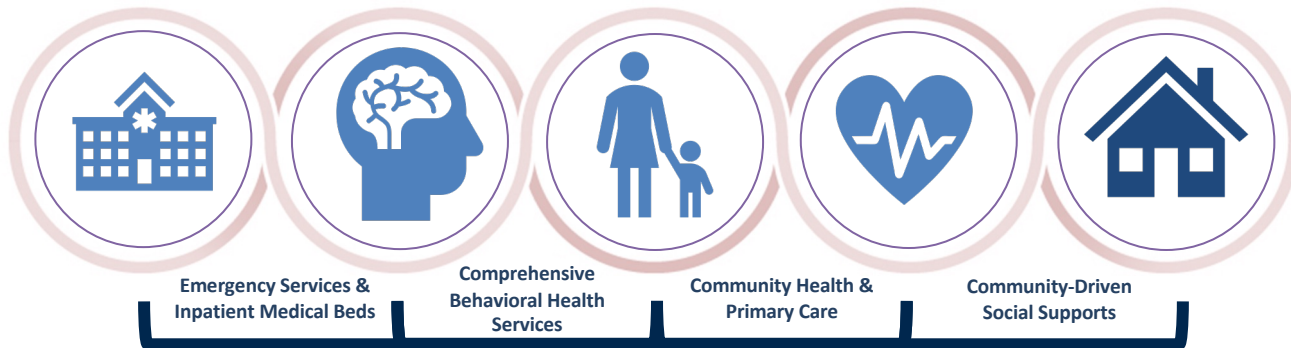
- Owned and operated by PHMC
- Convening partners, stakeholders and funders
  - Penn Medicine
  - Independence Blue Cross Foundation
  - Children's Hospital of Philadelphia (CHOP)
- Development and delivery of high-quality programs and services
- Ongoing community engagement to facilitate communication and ensure trust
- Job retention and expansion
- Focus on supplier diversity, equity and inclusion





# PHMC Public Health Campus on Cedar

PHMC, Penn Medicine and Independence Blue Cross Foundation are partnering with community stakeholders to transform the former Mercy Philadelphia Hospital into a *re-imagined campus focused on the needs of its West and Southwest Philadelphia neighbors.*



**Integrated community health and wellness hub**

# PHMC Public Health Campus on Cedar

## PHMC Programs in place currently...

- PHMC Health Center on Cedar in collaboration with Penn Medicine
- PHMC Dental, in collaboration with Penn Medicine
- Inpatient Hospice
- Medical Respite
- Community and Wellness Hub

# PHMC Public Health Campus on Cedar















# PHMC Public Health Campus on Cedar



COVER STORY

## Not another Hahnemann

Spared from closure, the former Mercy Philadelphia Hospital is reinventing itself under new ownership

JOHN GEORGE, 12-16

### FORTUNE 500 Local companies slide in rankings

A look at this year's list of the largest publicly traded corporations in the region.  
RYAN SHARROW, 2

### RETAIL Insomnia taps site for new HQ

The cookie chain is taking over a Center City spot and offering a retail experience.  
LAURA SMYTHE, 3



### LEADERSHIP Chamber change

Chelle Cameron is leaving PHL to take the top job at the Chamber of Commerce for Greater Philadelphia.  
LAURA SMYTHE, 10



Pennsylvania's most valuable exports 18

PHILADELPHIA  
BUSINESS JOURNAL  
May 27-June 2, 2022  
Vol. 41, No. 17  
400 Market St.  
Suite 1200  
Philadelphia, PA 19106



Breaking news online  
PBJ.com



Follow us on Twitter  
@PHLBizJournal



Daily email updates  
PBJ.com/newsletters





 **PHMC**

# Public Health Campus on Cedar

ULI Health Leaders Talk and Tour  
March 20, 2024

 **Children's Hospital  
of Philadelphia®**

 **Penn Medicine**

INDEPENDENCE BLUE CROSS  
FOUNDATION

**Independence** 

 **PUBLIC  
HEALTH**  
management  
corporation

 **BDP** **FIFTEEN**   
IMPACT REAL ESTATE ARCHITECTURE + DESIGN

# PROJECT SNAPSHOT

Seamless care and community hospital sustainability with Trinity Health transition

450,000 sf | +\$100 million investment | PHMC-owned | PHMC, HUP & CHOP tenants

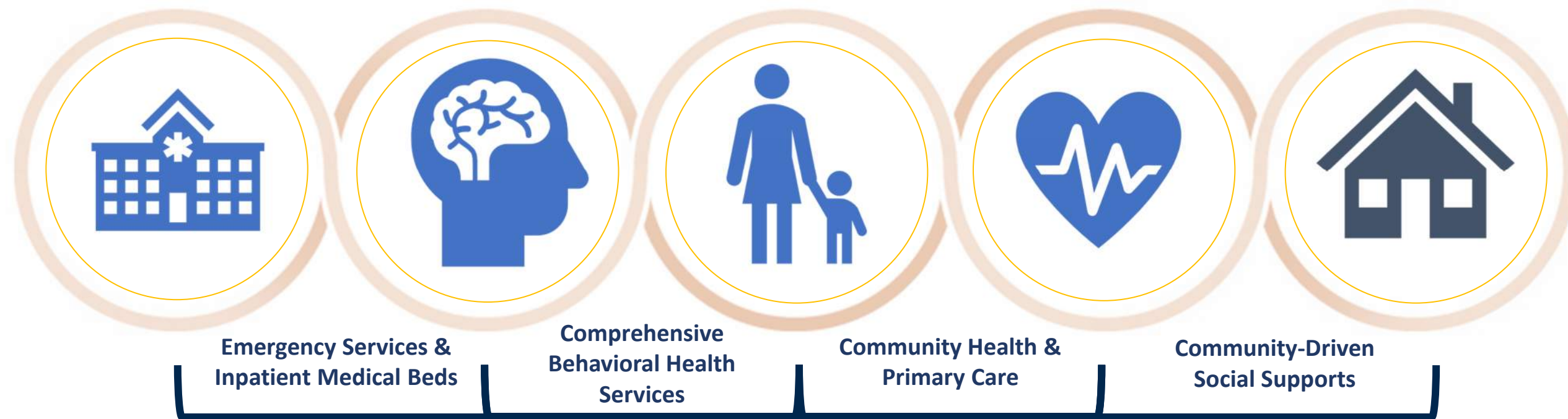
950 health care related jobs created/retained | 350 construction jobs | \$217 million annual economic impact

Integrated health and wellness for the community



# PHMC Public Health Campus on Cedar

PHMC, Penn Medicine/HUP, CHOP and Independence Blue Cross Foundation are partnering with community stakeholders to transform the former Mercy Philadelphia Hospital into a *re-imagined campus focused on the needs of its West and Southwest Philadelphia neighbors.*



**Integrated community health and wellness hub**

# PROJECT GOALS AND EXPECTED IMPACT

## GOALS

- CONTINUITY OF CARE– maintaining uninterrupted community hospital presence in community
- HEALTH EQUITY- meeting community health and wellness needs
- JOB CREATION– creating/retaining jobs and investing in workforce development
- SOCIAL CAPITAL- providing resources addressing social determinants of health
- COMMUNITY VIBRANCY- serving as a neighborhood anchor and community health and wellness

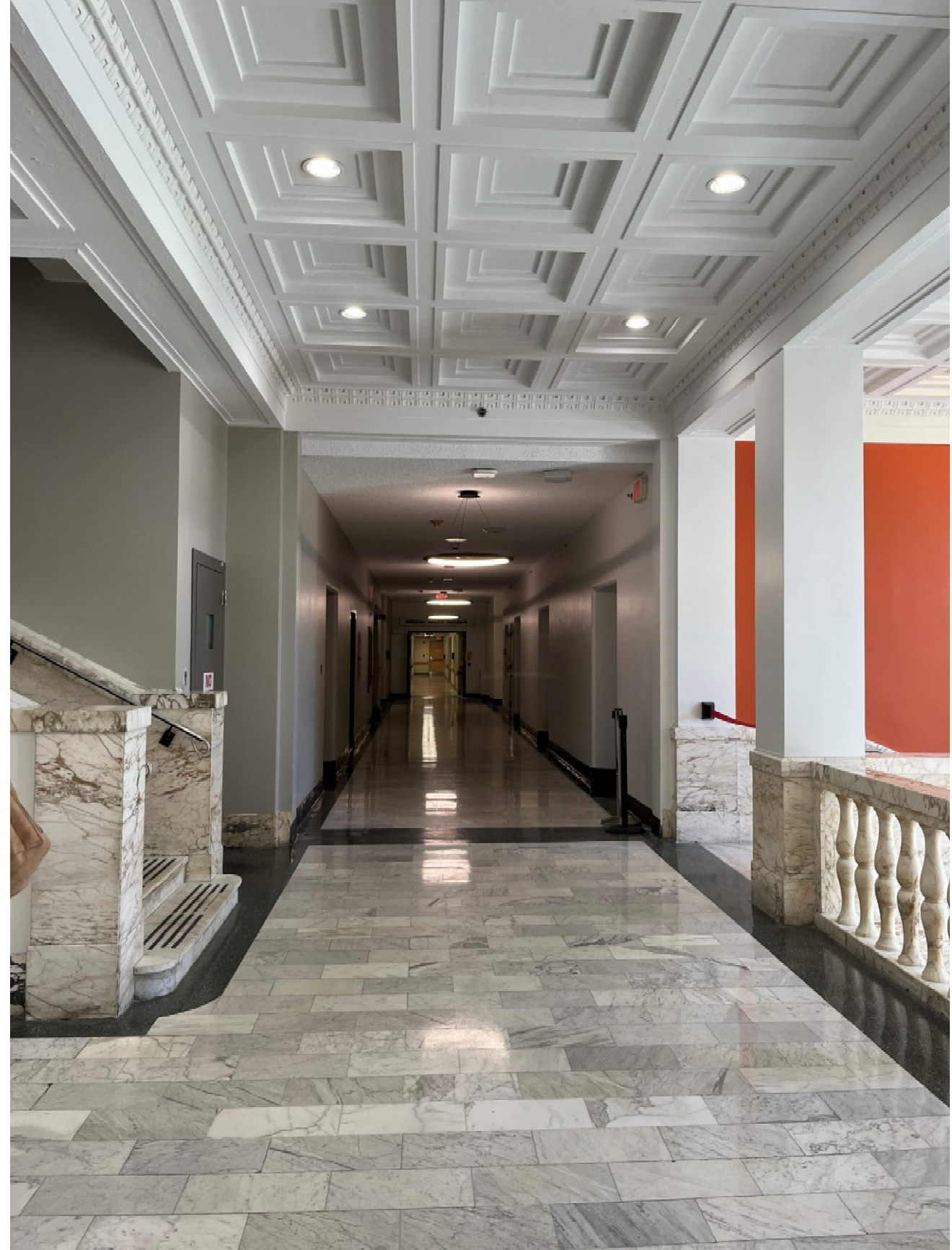
## IMPACT

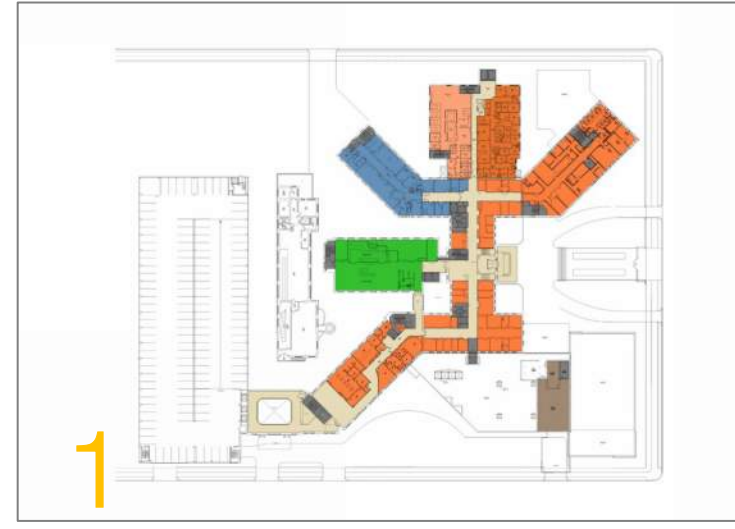
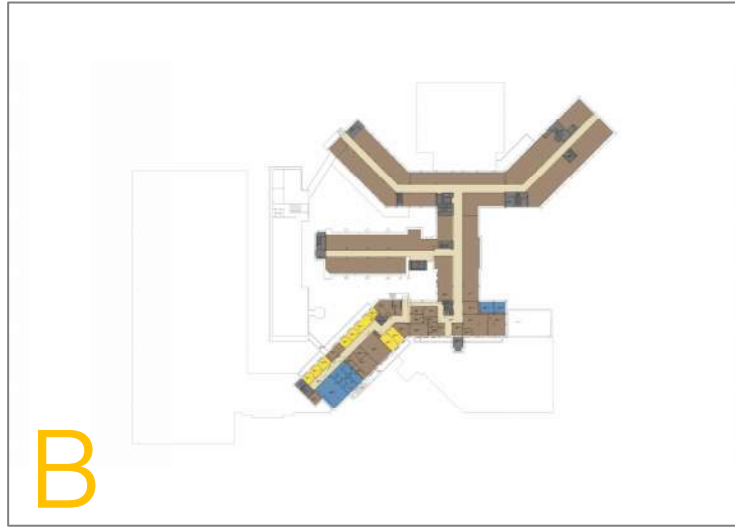
- 500 Mercy Hospital jobs preserved
- 450 health services related jobs projected to be created
- 350 total construction jobs projected at full build-out
- 40% of construction subcontractors currently onsite are MBE / WBE (24% MBE / 16% WBE)
- 26% of construction workers currently onsite self-identify as minority
- 22 local residents currently employed in construction onsite
- \$217 million anticipated annual economic impact
- \$93 million anticipated annual wages earned
- \$3.7 million anticipated annual tax revenue

# EXISTING CONDITIONS



# PHMC PUBLIC HEALTH CAMPUS – DAY 1 IMPROVEMENTS



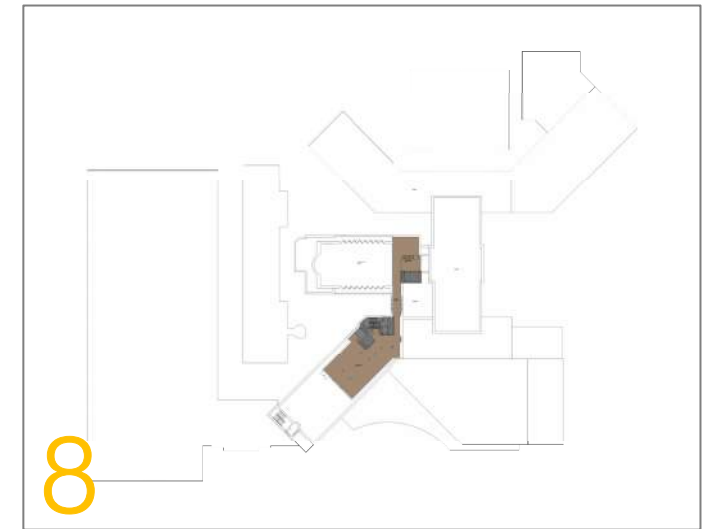
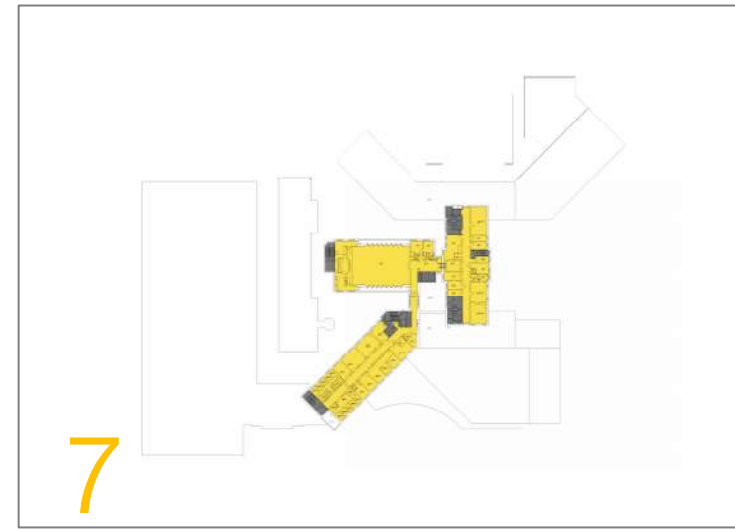
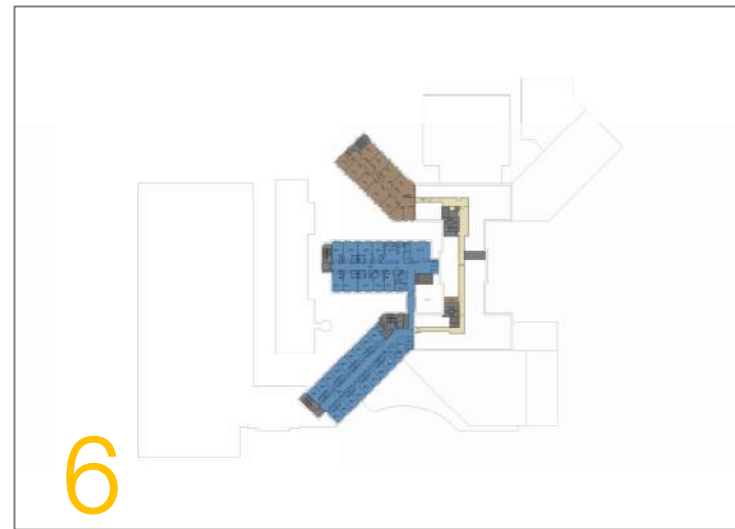
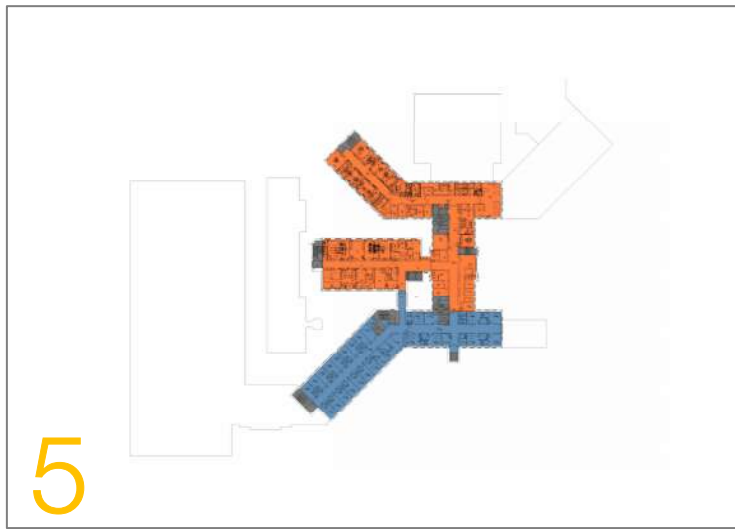
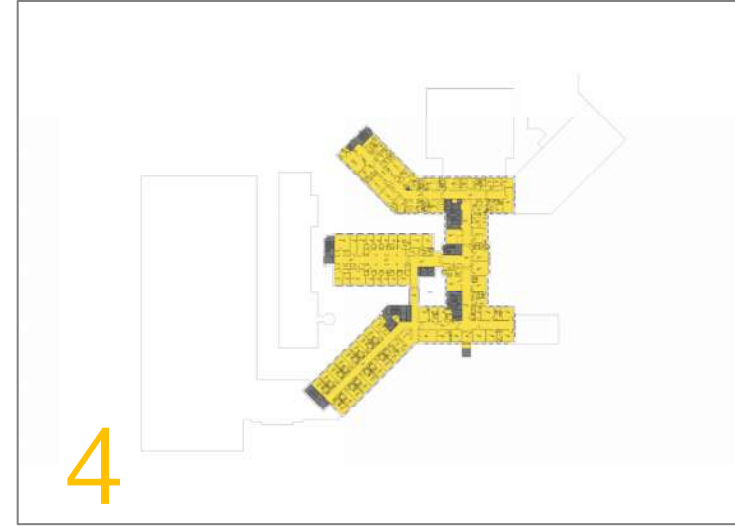
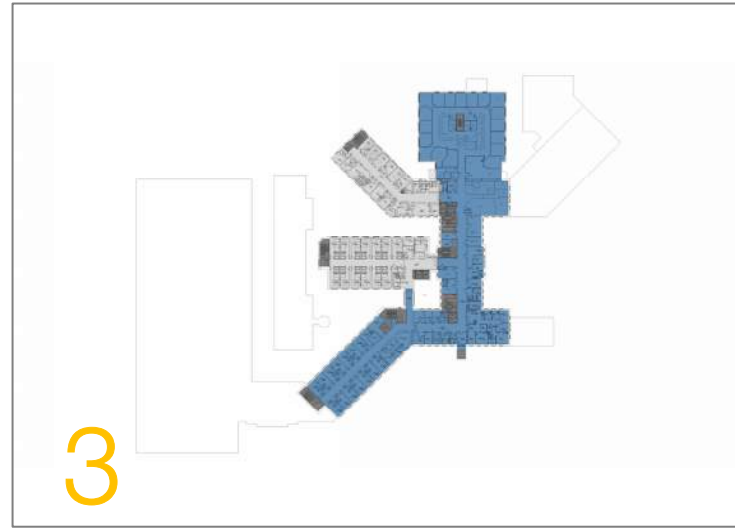
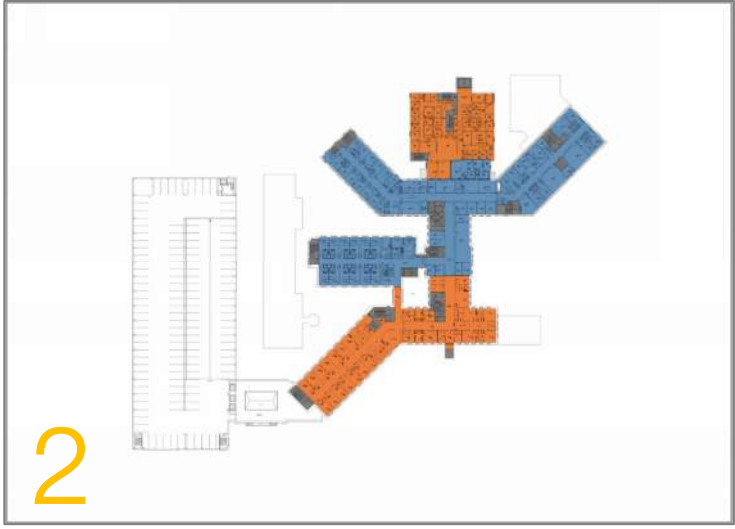


# ALL FLOORS

## AREA SUMMARY

### LEGEND

- PHMC
- PENN
- CHOP
- Cafeteria / Kitchen
- Common
- Stairs / Elevators
- Building Support





# PHMC PUBLIC HEALTH CAMPUS – TENANTS

## PHMC HEALTH CENTER ON CEDAR & PHMC DENTAL CLINIC

- Care provided in collaboration with Penn Medicine
- Integration of primary care and behavioral health
- Walk-ins welcome and appointments accepted

## PHMC MEDICAL RESPITE

- PHMC program offering post-acute medical care for men and women experiencing homelessness who are recovering from physical illness, surgery or injury; 20 beds

## PHMC / VISITING NURSE ASSOCIATION INPATIENT HOSPICE UNIT

- VNA's IPU provides comprehensive and personalized care for patients and their families requiring this acute level of care; 15 beds

## HOSPITAL OF THE UNIVERSITY OF PENNSYLVANIA

- Emergency Department, Critical Care & Inpatient Services

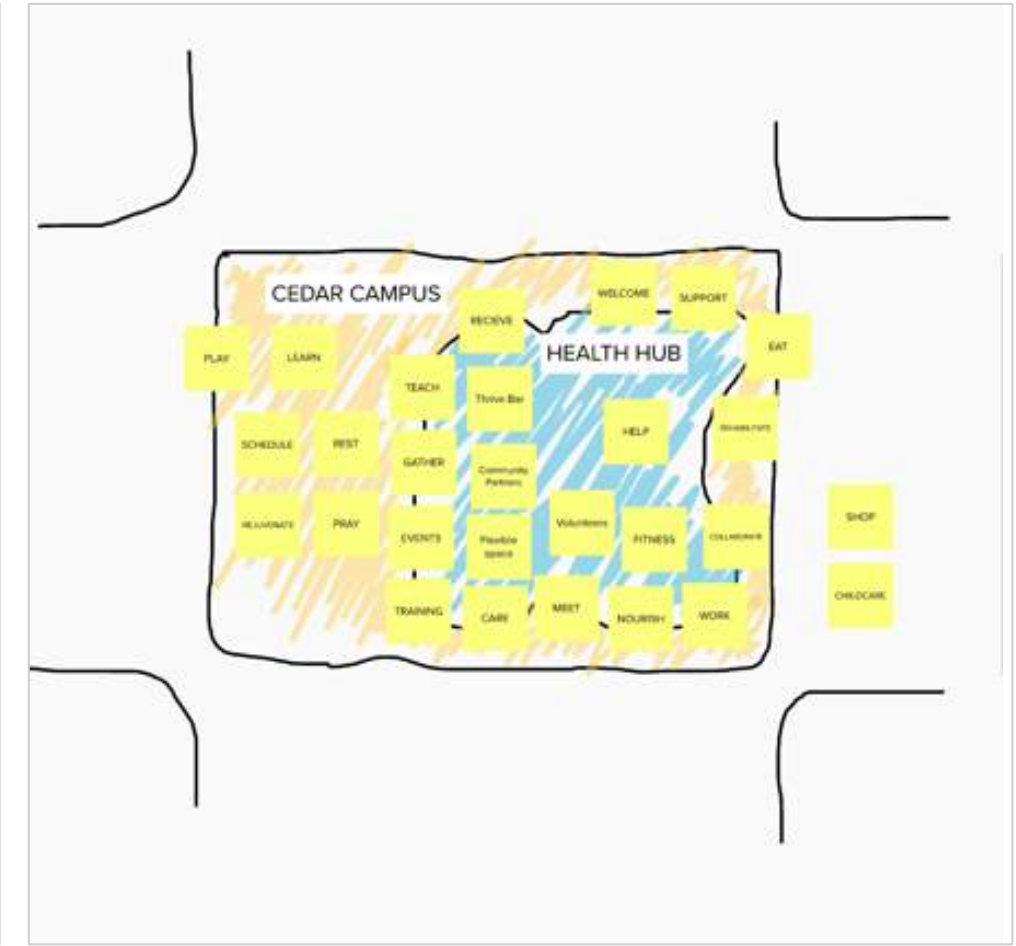
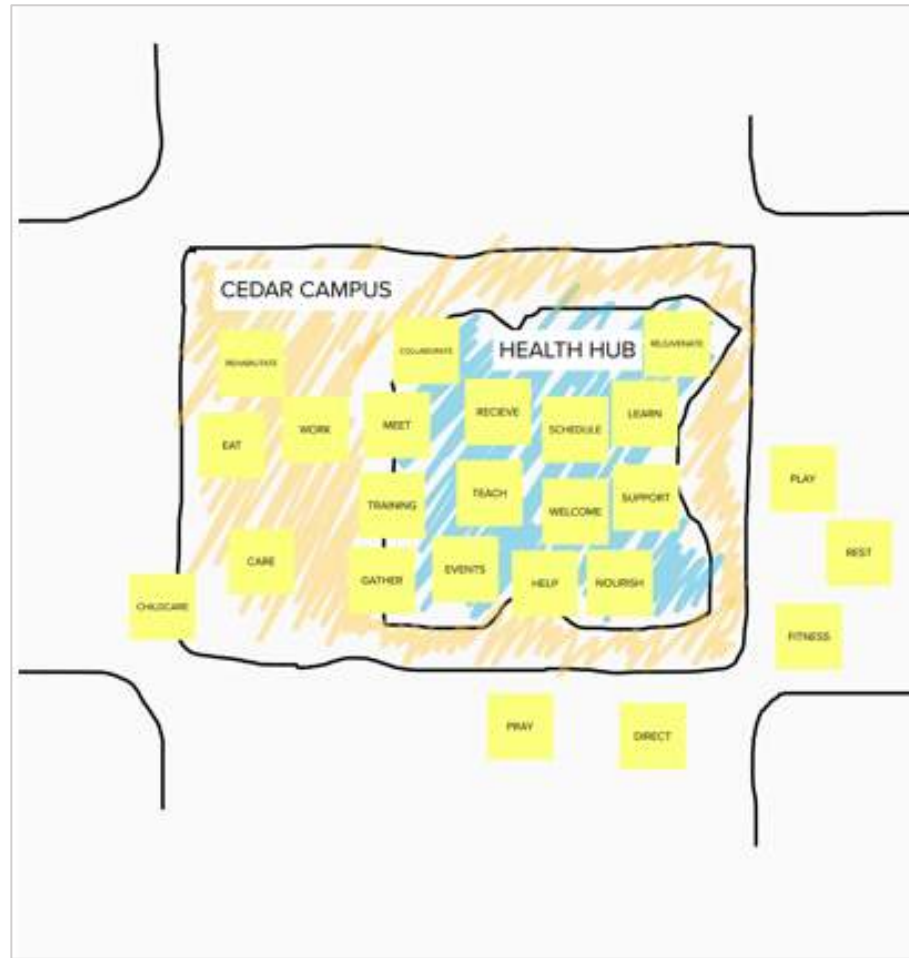
## CHILDREN'S HOSPITAL OF PHILADELPHIA

- Crisis Response Center and Inpatient Mental Health

## COMMUNITY WELLNESS HUB

- Shared building amenities and social services

# PHMC PUBLIC HEALTH CAMPUS – VISIONING



## ACTIVITIES

- MEET
- LEARN
- SUPPORT
- GATHER
- TRAIN
- COLLABORATE
- WELCOME
- CARE

## PROGRAMS

- PARENT CAFES
- EDUCATION TOPICS
- HEALTH KIOSK SCREENS – REFERRALS
- WORKFORCE TRAINING & EDUCATION
- CEU TRAINING ENTITY
- COMMUNITY GROUPS

## PARTNERSHIIPS

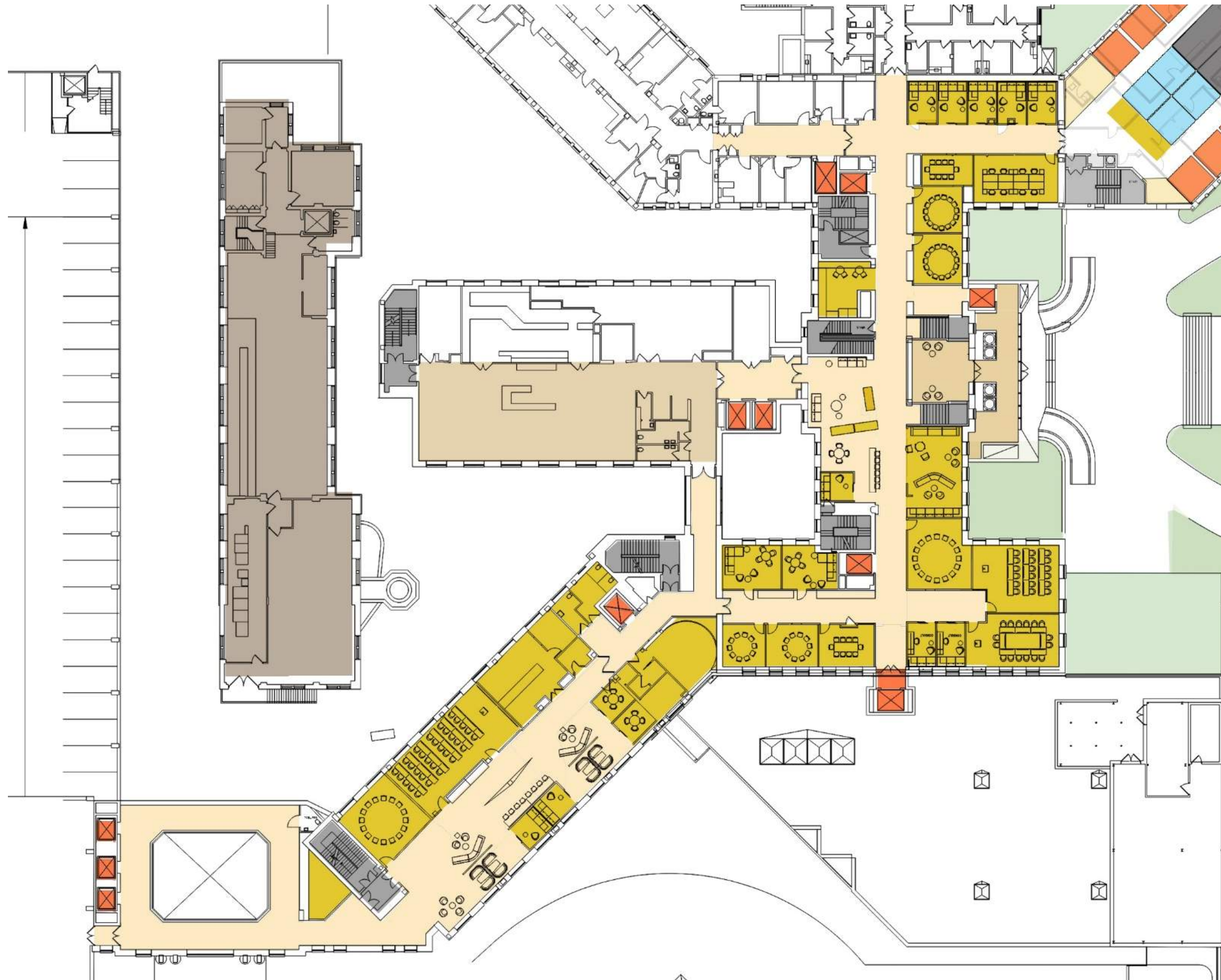
- PA NEN
- SNAP-ED
- FAWN
- YMCA
- AMERICRPS
- HPC
- CHWs
- CBH
- CBO's

# COMMUNITY WELLNESS HUB – PROGRAMMING



- 
**COMMUNITY**  
 Reception  
 Waiting  
 Town Hall  
 Event Space
- 
**WELLNESS**  
 CBH  
 Nutrition  
 Chronic Disease  
 Social Services
- 
**LEARNING**  
 Programming  
 Training  
 Federal Credit Union
- 
**WORKPLACE**  
 Support  
 Staff  
 Work-Share  
 Business Center
-  Internal Entry Point

# PHMC PUBLIC HEALTH CAMPUS – CONCEPT



## PROGRAM DESCRIPTION

- CREATION OF NON-DENOMINATIONAL CHAPEL
- COMMUNITY CO-WORKING SPACE
- COMMUNITY LIVING ROOM AND FINANCIAL LOUNGE
- CENTRAL PUBLIC HEALTH RESOURCES CENTER
- PHMC PHARMACY
- SHARED MEETING ROOMS, TRAINING ROOM, GROUP ROOMS AND CONFERENCE ROOMS
- ACCESSIBLE ENTRANCE
- RECEPTION / SECURITY

# PHMC PUBLIC HEALTH CAMPUS – WELLNESS HUB AND COURTYARD ENTRANCE





PUBLIC  
HEALTH  
management  
corporation

PUBLIC HEALTH CAMPUS

CEDAR



FIFTEEN ARCHITECTURE + DESIGN  
PROJECT # 191021PHM

PHMC PUBLIC HEALTH CAMPUS ON CEDAR  
20 MARCH 2024



# PHMC PUBLIC HEALTH CAMPUS – IN PROGRESS



# PHMC PUBLIC HEALTH CAMPUS – IN PROGRESS







# PHMC AT PROVIDENT HEALTH CAMPUS



# EXISTING CONDITIONS



## PHMC AT PROVIDENT HEALTH CAMPUS

The building is envisioned as flexible allowing multiple programs to co-exist and promoting integration of PHMC programs. Multiple programs share common spaces and amenities while meeting their own unique needs.

## USERS AND USER NEEDS



### PHMC Staff

- Residents
- 1500 Exec
- Conference Center



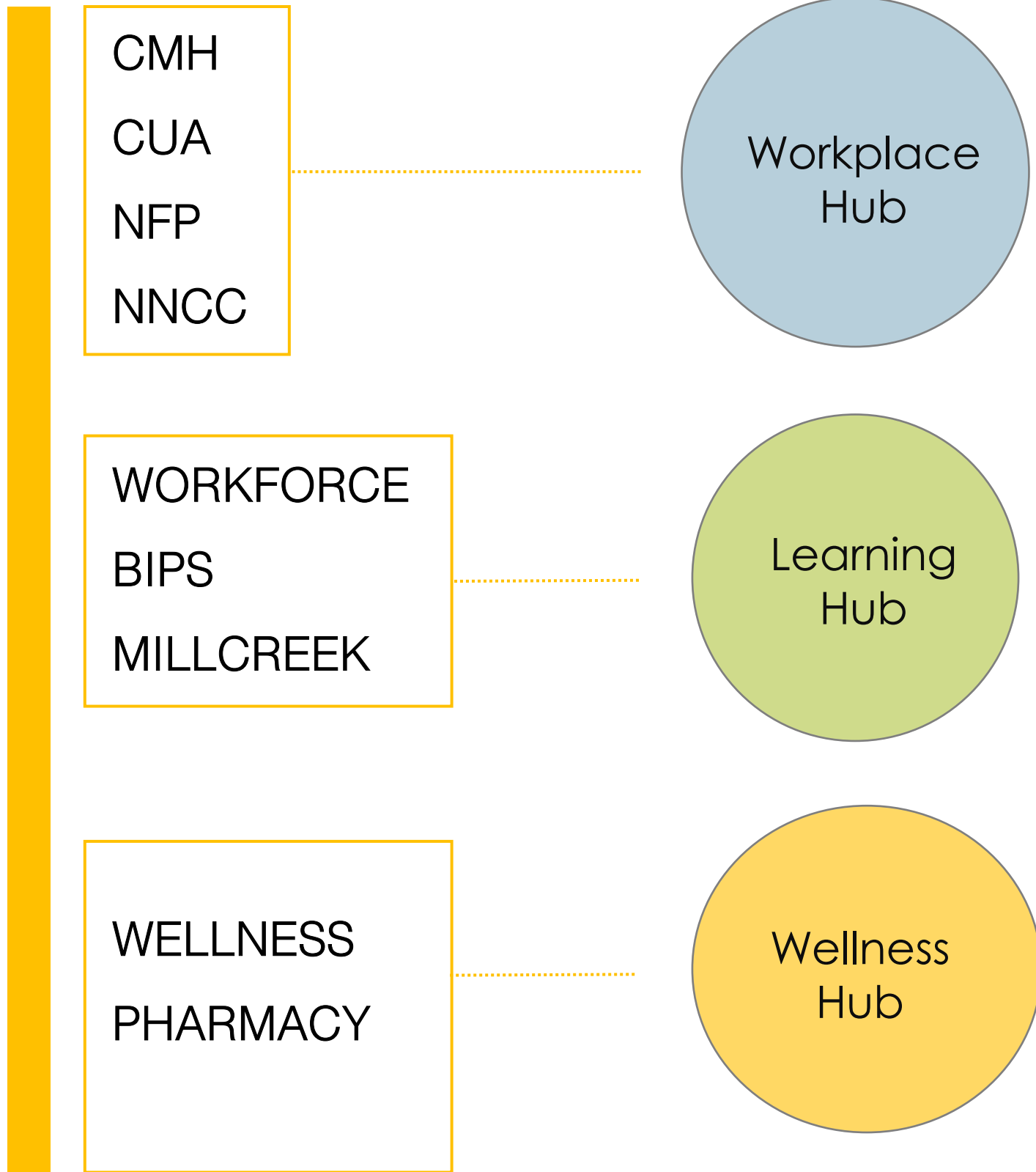
### PHMC Clients & Prospective Clients

- Mothers w/ Children – NFP
- Youth – BIPS / Millcreek
- Adults - Workforce
- Families – CMH

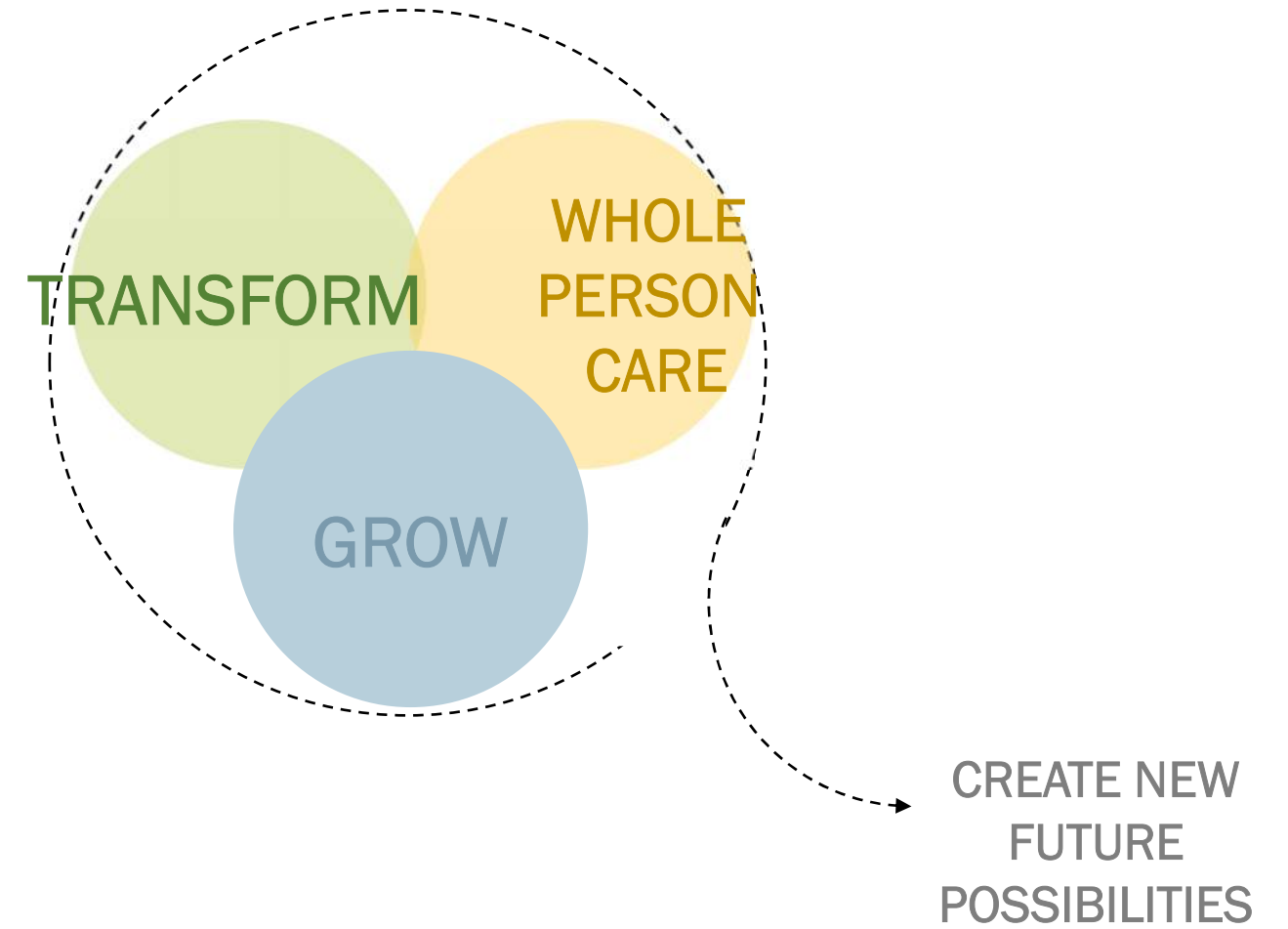
### Needs

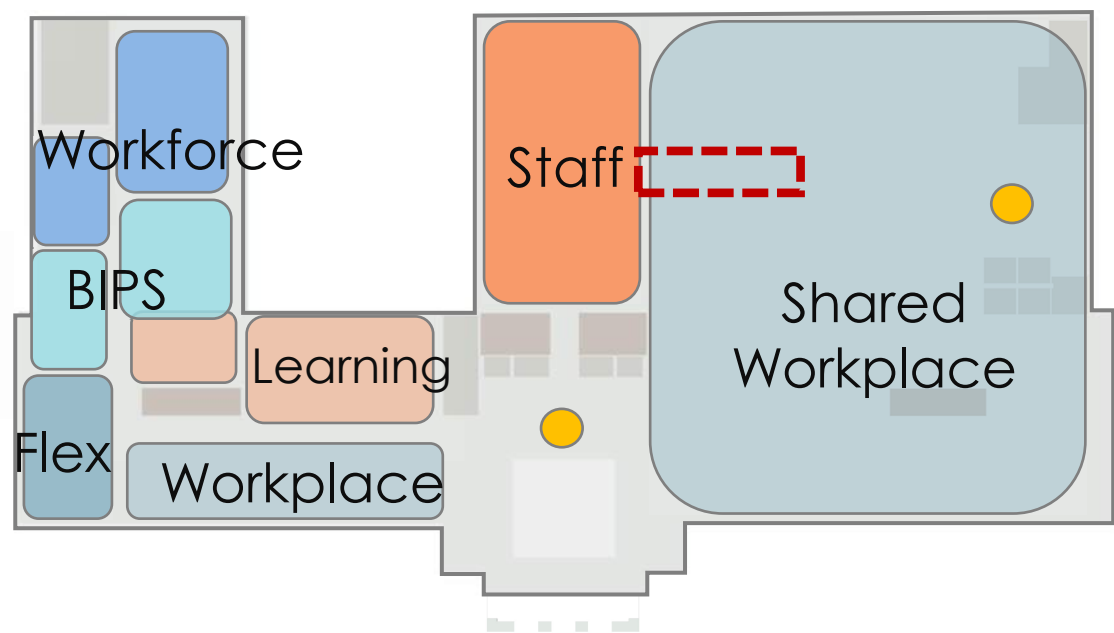
- Visitation
- Intake
- Program Participant
- Resources Use

# PROGRAM SYNERGIES

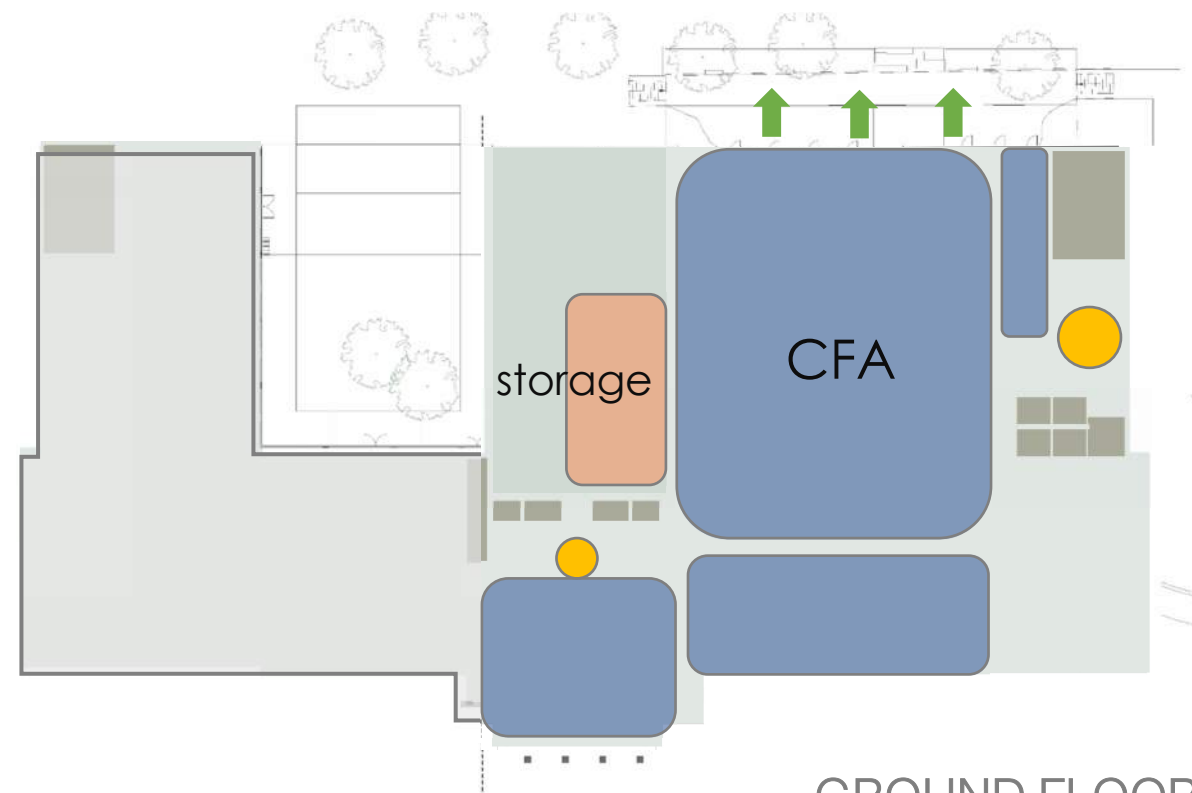


# PROJECT GOALS

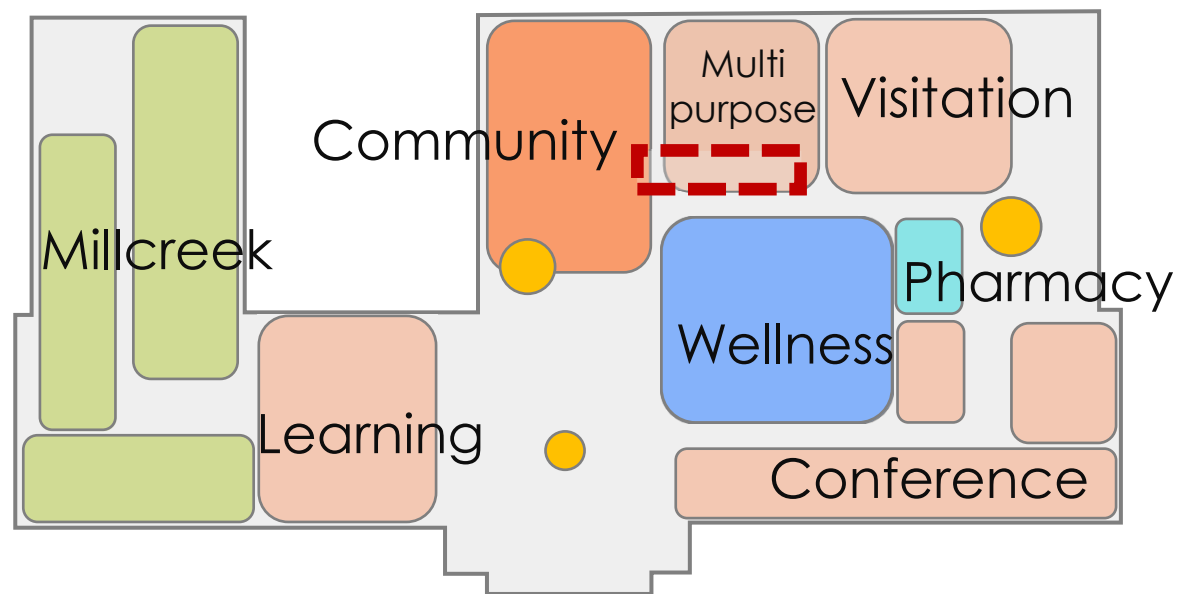




SECOND FLOOR

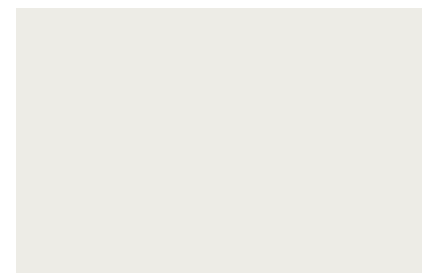


GROUND FLOOR



FIRST FLOOR

- Shared Community
  - Wellness Clinic
  - Millcreek
- Shared Program
  - Pharmacy
- BIPS
  - Workforce
- Shared Workplace:
  - Flex



RETREAT

CALM

HAVEN

REJUVENATE

NATURAL  
MATERIALS



THANK YOU!