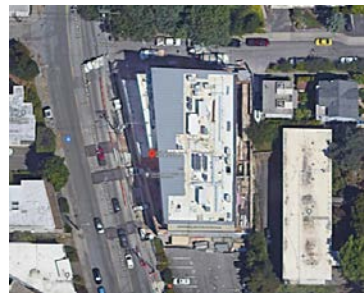




Locator Map

Aegis Lake Union lies within Seattle, near the University of Washington campus.

Image Credit: N/A



Aerial View

Aegis Lake Union lies within Seattle, near the University of Washington campus.

Image Credit: N/A



Site Plan

Aegis Lake Union lies within Seattle, near the University of Washington campus.

Image Credit: N/A



Image 1

The richly landscaped rooftop terrace allows residents to take in the beautiful views and skyline of Seattle while enjoying time with friends and family in the adjacent well appointed “Splash!” Sky Lounge

Image Credit: Magda Biernat



Image 2

The richly landscaped rooftop terrace allows residents to take in the beautiful views and skyline of Seattle while enjoying time with friends and family in the adjacent well appointed “Splash!” Sky Lounge.

Image Credit: Magda Biernat



Image 3

The intricate details are intentionally repeated throughout and provide a nod to the unique patterns created as oars move effortlessly through the water.

Image Credit: Magda Biernat



Image 4

The storefront windows open completely to further emphasize a connection between the interior and the exterior.

Image Credit: Magda Biernat



Image 5

This senior living project was intentionally designed to integrate seamlessly into the existing community.

Image Credit: Magda Biernat



Image 6

This senior living project observes and highlights the beauty of Lake Union and the activities the area is known for, as well as features a wholistically well, fully sustainable building.

Image Credit: Magda Biernat



Image 7

As a design firm, we successfully unified this micro community to the neighborhood, the larger City of Seattle, and the University of Washington (the alma mater of many residents in the facility).

Image Credit: Magda Biernat



Image 8

The sustainable design allows for an emission-free and energy efficient project.

Image Credit: Magda Biernat



Image 9

The storefront windows open completely to further emphasize a connection between the interior and the exterior.).

Image Credit: Magda Biernat



Image 10

The intricate details are intentionally repeated throughout and provide a nod to the unique patterns created as oars move effortlessly through the water.

Image Credit: Magda Biernat



Image 11

At the Dockside Diner, chef prepared meals are personalized to meet the residents' requests whenever they so desire.

Image Credit: Aaron Locke

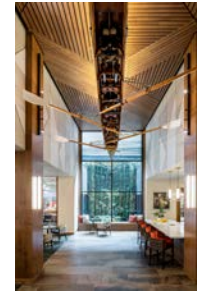


Image 12

Upon entering the double height lobby space, you are drawn to the 2-story high cascading waterfall; artfully created to look as if it has existed there for many years. .

Image Credit: Aaron Locke

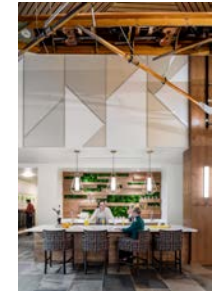


Image 13

The juice bar offers residents a place to connect with their neighbors to enjoy fresh smoothies and coffee after spending time in the wellness center.

Image Credit: Magda Biernat



Image 14

Celebrating the beauty of the classic boathouse, the ceiling features an original Pocock racing shell that spans the lengths of the ceiling, another nod to the 1936 University of Washington Olympic gold-medal rowing team.

Image Credit: Magda Biernat



Image 15

The Living Room is adjoined to the activity room where residents and guests can enjoy coffee and pastries, sit and read the paper, or chat about what movie they plan to watch at "The Lake" Cinema.

Image Credit: Magda Biernat

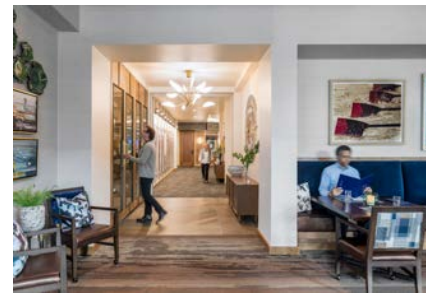


Image 16

The Row House dining room gives residents access to world-class, chef-inspired dining. For special occasions, guests can host private dinners with friends in the Champions Lounge.

Image Credit: Magda Biernat



Image 17

Residents can take advantage of the sweeping views of Lake Union and the Space Needle as well as the entire Seattle skyline. The Splash Sky Lounge offers connections to the exterior and provides opportunities for relaxing or celebrating with friends.

Image Credit: Magda Biernat



Image 18

The spectacular Pocock shell that hangs from the lobby ceiling highlights the beauty of the oars. Every angle and line connect and pay homage to the beauty shape and movement.

Image Credit: Magda Biernat



Image 19

The centrally located living room provides residents with a great opportunity to connect with friends and family.

Image Credit: Magda Biernat



Image 20

The community offers several areas where the residents can appreciate a good meal served to them by a friendly staff in a warm, welcoming space.

Image Credit: Magda Biernat