

ULI Health Leaders - Detroit Panel

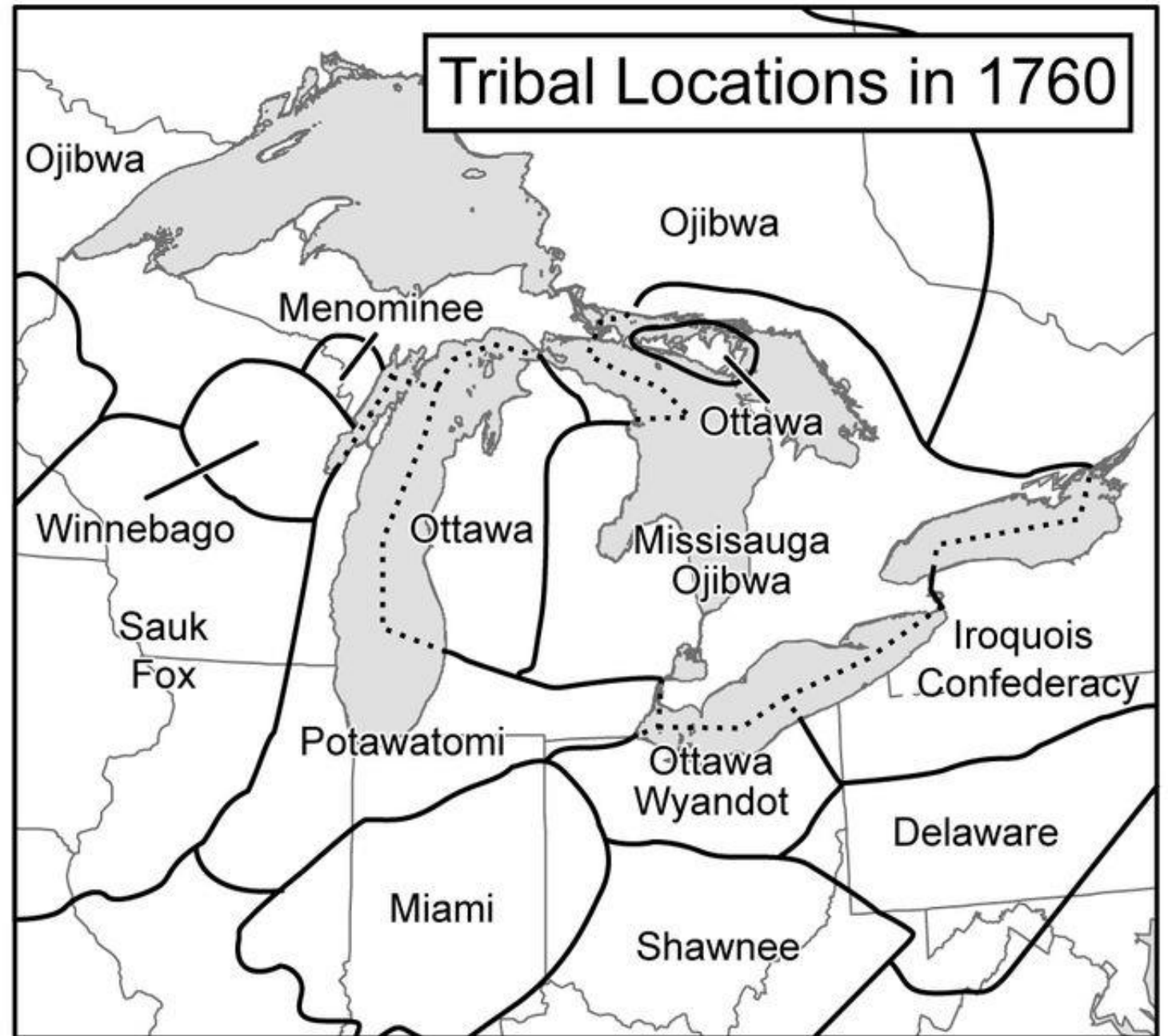
Friday, May 13, 2022

Angela Reyes, MPH



DETROIT
HISPANIC
DEVELOPMENT
CORPORATION

We are joining you from the land of the Anishinaabeg—the Three Fires Confederacy of the Ojibwe, Odawa, and Potawatomi, along with their neighbors, the Seneca, Delaware, Shawnee, and Wyandot nations. Most lands in the contemporary U.S. were acquired by unconscionable means. Understanding the history of genocide and settler colonialism that underlies contemporary health inequities can create a foundation for applying our research, teaching and practice to create a more just and equitable future.



The five dimensions of health and wellbeing are interrelated and affect each other.



**Our health is
connected to
the earth's
health**

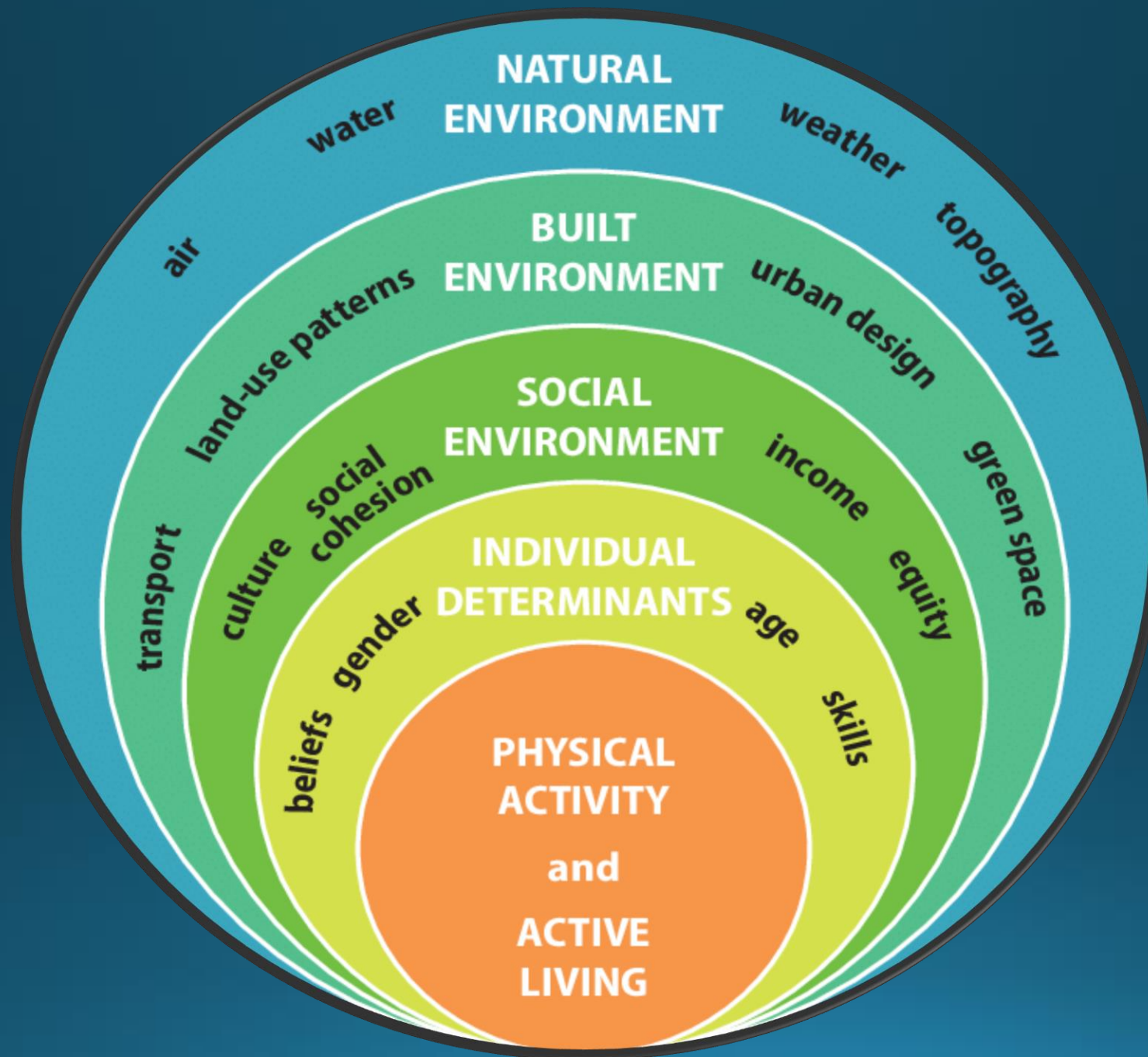


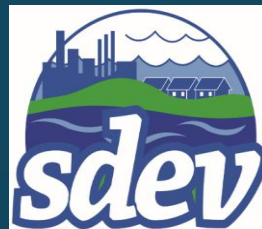
A microscopic image showing several coronavirus particles. The particles are spherical with a textured, orange-brown surface and numerous long, thin, hair-like projections (spikes) extending from their surface. The background is blurred, showing other similar particles and some indistinct shapes, possibly representing a laboratory setting.

Coronavirus and Climate Change

Climate change alters how we relate to other species on Earth and that matters to our health and our risk for infections.

DHDC works at the individual, community and systemic levels to create change.





*Partnering
to create
change*





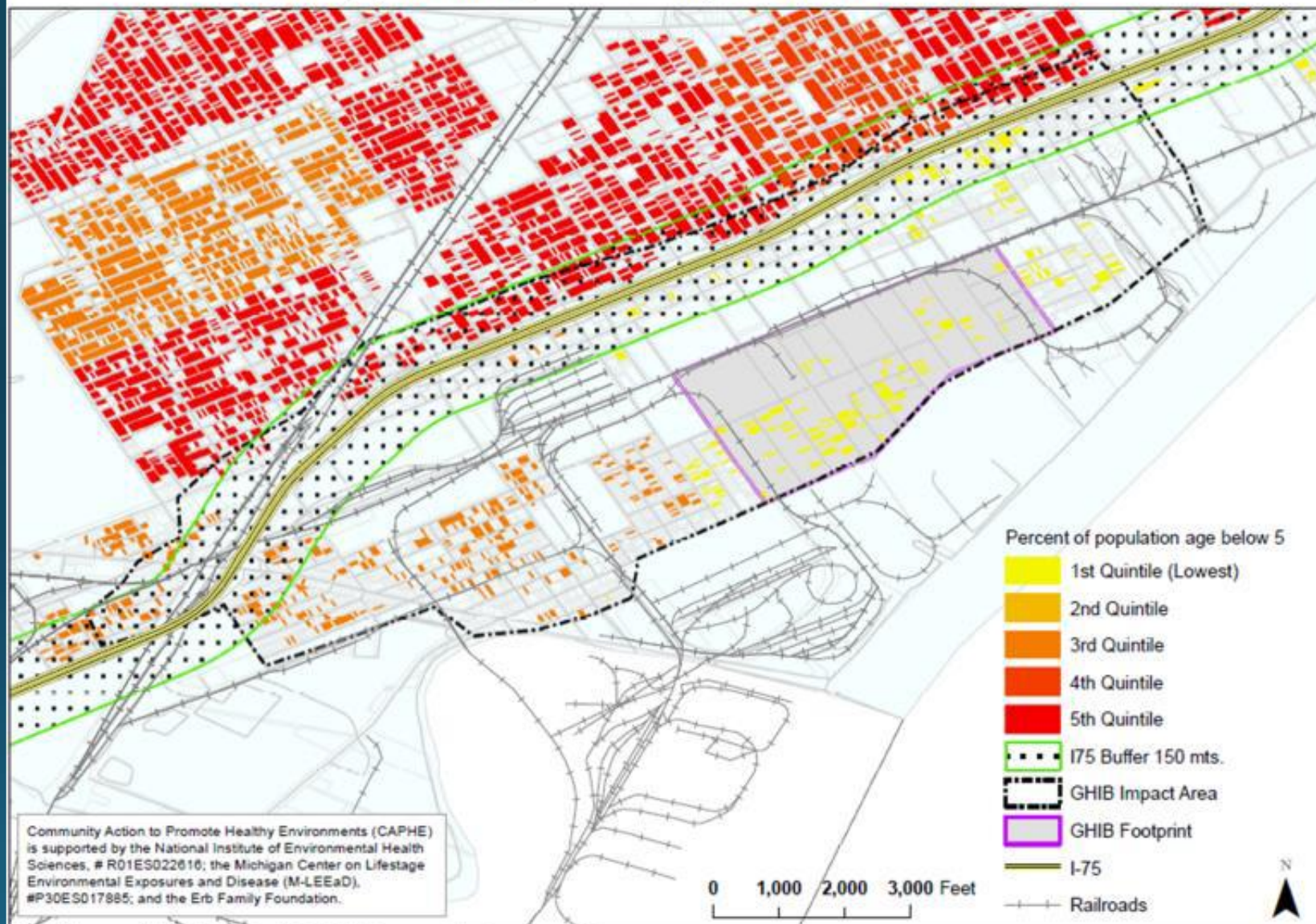
DETROIT
HISPANIC
DEVELOPMENT
CORPORATION

Providing Information about Health Impacts of planned developments to affected communities



Funded by NIEHS Grant # RO1ES022616 and the Fred A and Barbara M. Erb Family Foundation with additional support from NIEHS Grant # P30ES017885 and the City of Detroit Health Dept.

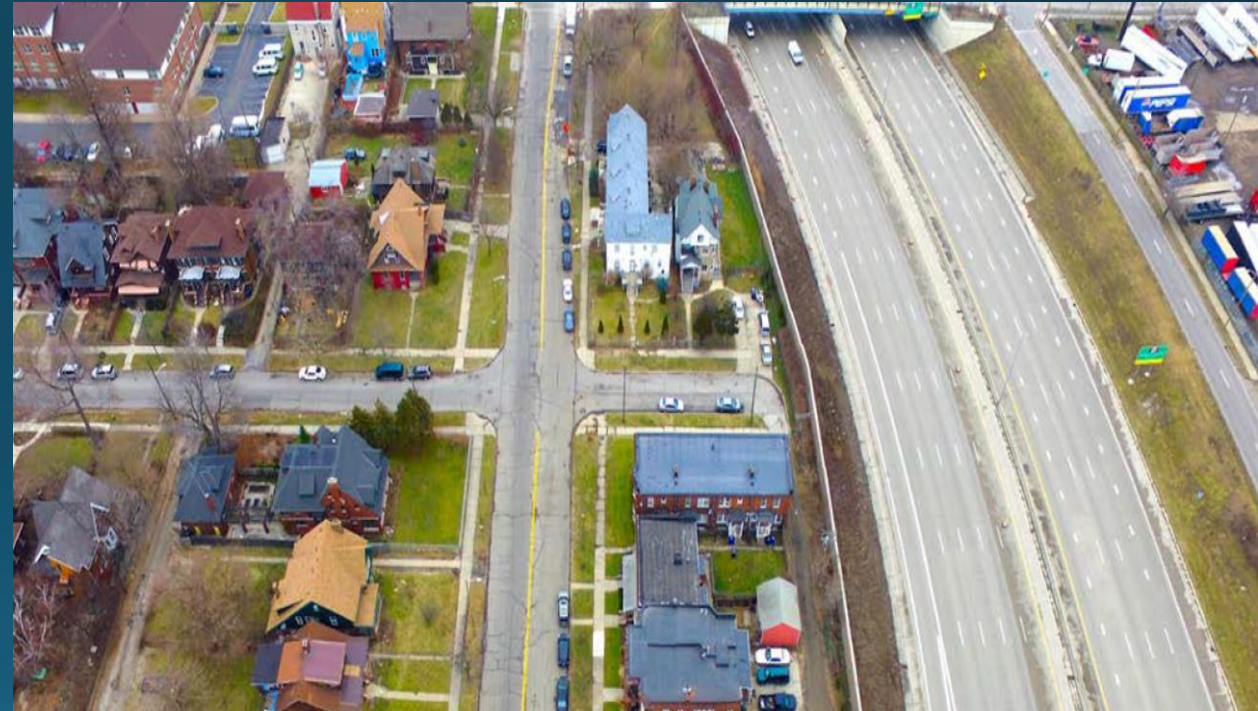
Gordie Howe International Bridge (GHIB) impact area
Percent of population age below 5 at parcel level & 150 mts. buffer



Population age below 5. Source: ACS 2013 5-years estimate census data

HEALTH IMPACT ASSESSMENTS: LAND USE, AIR QUALITY AND HEALTH

- Assessed likely health impacts of new bridge
- Evidence of inequitable impact
- Disproportionate burden of asthma attributable to air pollution
- Recommendations to reduce adverse health impacts (selected)
- Expand home buyouts to allow people to move away
- Expand home retrofits to clean indoor air



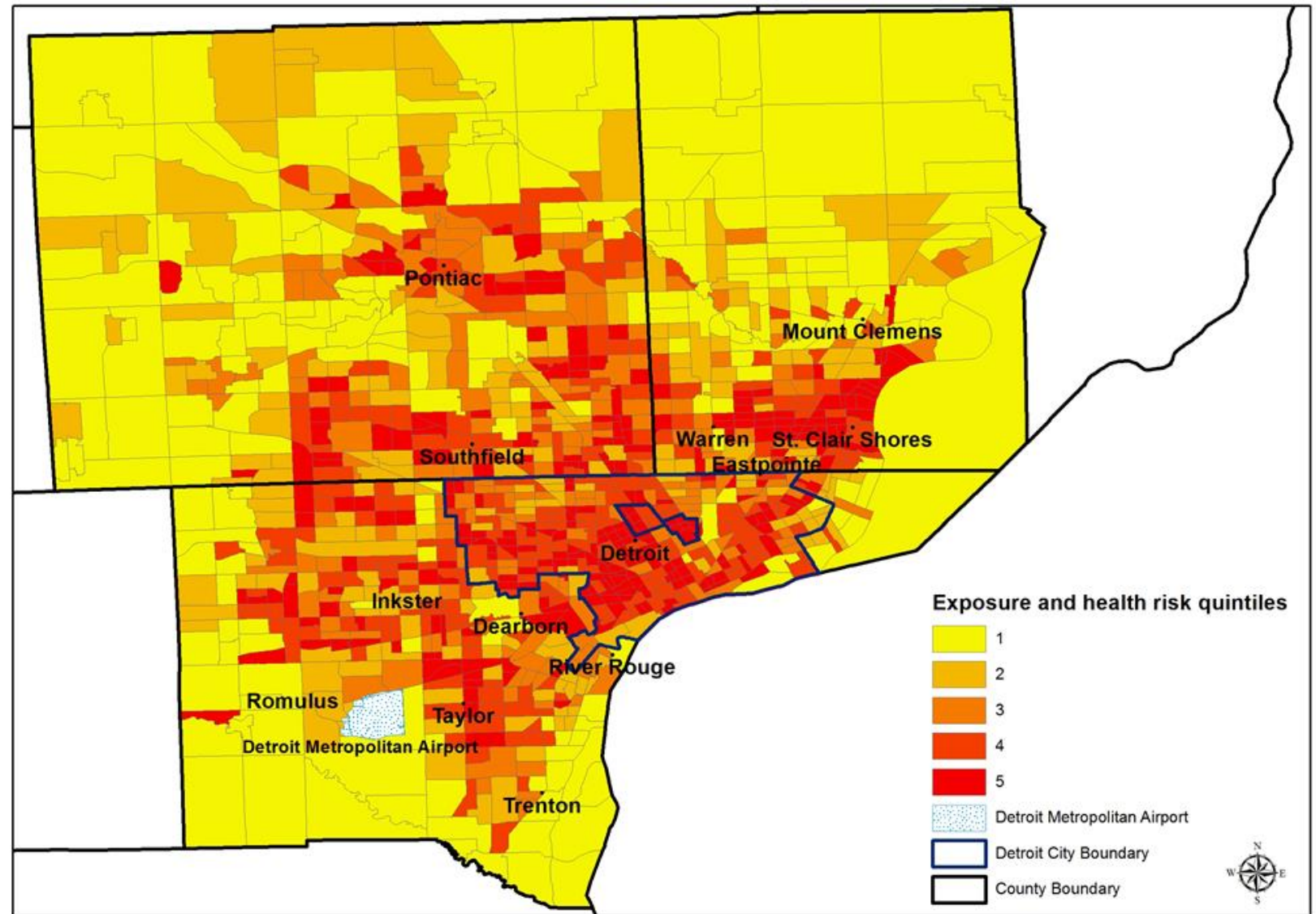


Cumulative Risk Index includes combined risks from:

- Hazardous Facilities & Land Uses
- Pollution Exposure and Health Risks
- Population Characteristics

Schulz, Amy J., Mentz, Graciela B., Sampson, Natalie, Ward, Melanie, Anderson, Rhonda, De Majo, Ricardo, Israel, Barbara A., Lewis, Toby C., & Wilkins, Donele. (2016). Race and distribution of social and physical environmental risk: A Case Example from the Detroit Metropolitan Area. *Du Bois review: Social science research on race*, 13(2), 285–304. <https://doi.org/10.1017/S1742058X16000163>

Figure 5: Cumulative risk index (CRI) at the tract level (mapped in CI polygons)—Detroit Metropolitan Area



Cumulative impact polygons (CI) include: residential areas, child care facilities, health care facilities, schools and playgrounds.
 5 Exposure and Health risk include: 2011 NATA estimates of respiratory risk, cancer risk and diesel PM (non-cancer) concentration.

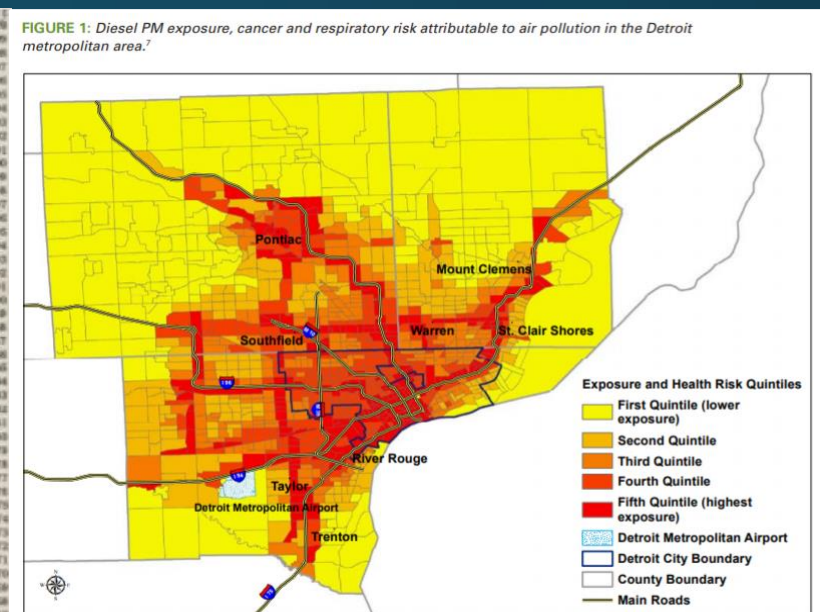
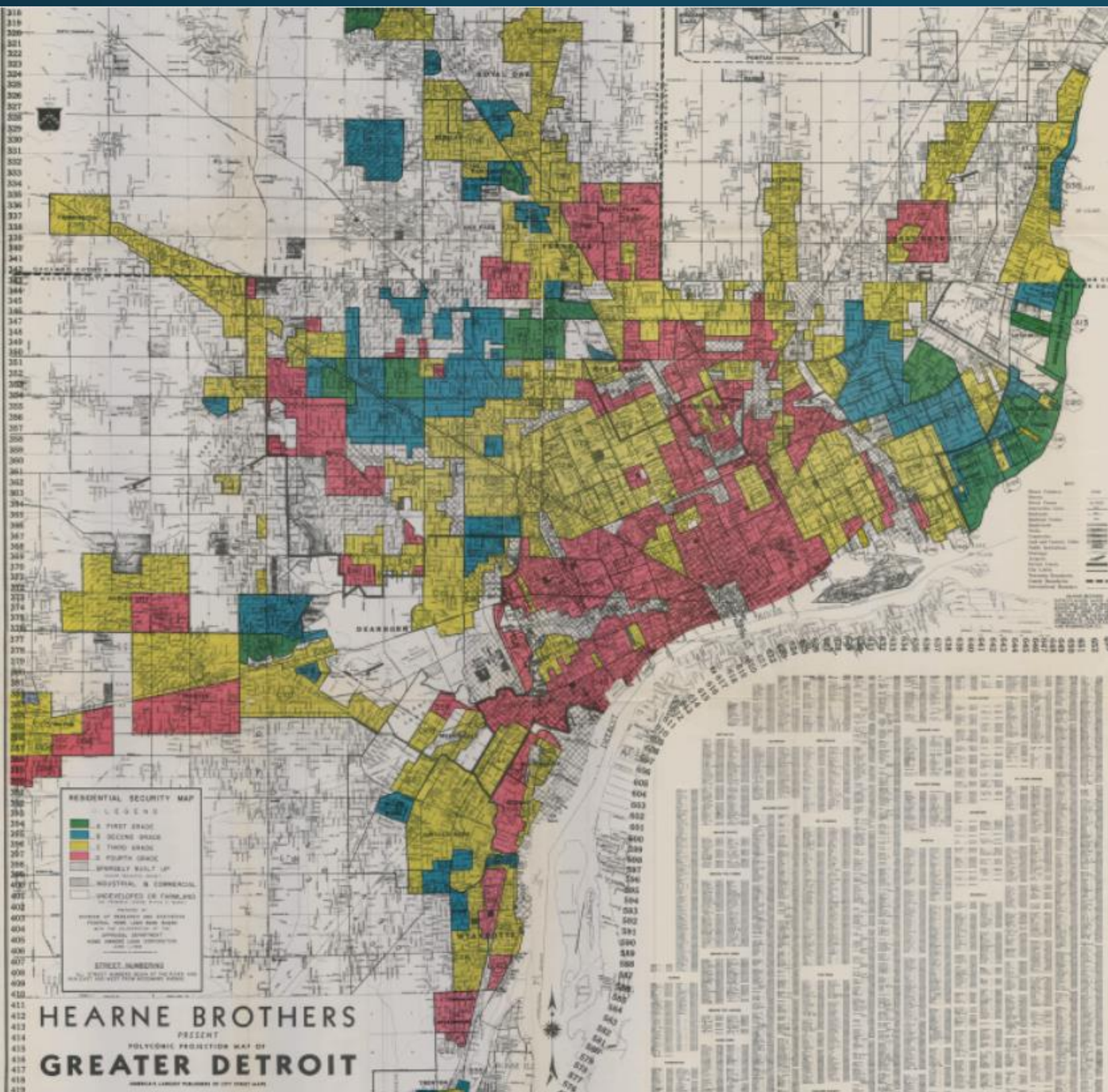


FIGURE 1: Diesel PM exposure, cancer and respiratory risk attributable to air pollution in the Detroit metropolitan area.⁷

Cumulative impact polygons (CI) include: residential areas, child care facilities, health care facilities, schools and playgrounds. Exposure and Health risk include: 2011 NATA estimates of respiratory risk, cancer risk and diesel PM (non-cancer) concentration.

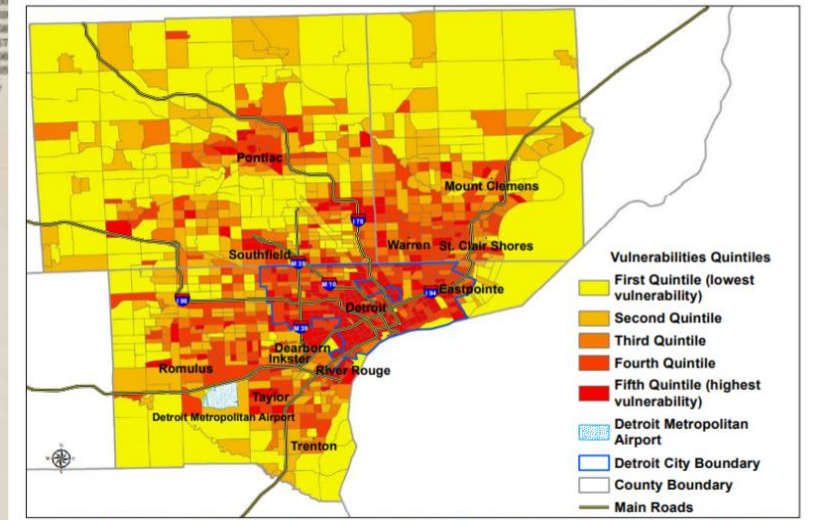


FIGURE 2: Population vulnerability, defined as percent below poverty, renters, low median home value, less than high school education, adults over age 60, and children below age 5, in the Detroit Metropolitan Area.⁷

Cumulative impact polygons (CI) include: residential areas, child care facilities, health care facilities, schools and playgrounds. Vulnerabilities include: % below the national poverty level, % renters, median house value (reverse coded), % > age 24 with < high school completion, children age < 5, adults age >= 60, and linguistic isolation.

Schulz, A. J., Mentz, G. B., Sampson, N., Ward, M. Anderson, R., De Majo, R., Israel, B. A., Lewis, T. C., & Wilkins, D.. (2016). Race and distribution of social and physical environmental risk: A Case Example from the Detroit Metropolitan Area. *Du Bois Review*, 13(2), 285–304.



QUANTIFIED HEALTH IMPACTS

- **Each year** in the Detroit Metropolitan Area, air pollution is responsible for:
 - 690 deaths
 - 1800 hospitalizations and emergency room visits
 - Thousands of missed school and workdays
- Total monetized cost of \$6.9 billion per year**

These effects occur disproportionately in Detroit and surrounding areas with high concentrations of poverty, African American and Latino residents.



Three Ways to Apply for FEMA & SBA Assistance

IN-PERSON at a DETROIT DISASTER RECOVERY CENTER

1



Kemery Recreation Center
2260 S. Fort Street
Golightly Career Technical Center
900 Dickerson
7 a.m. to 7 p.m. Daily

2



ONLINE

FEMA ONLINE: Visit DisasterAssistance.gov and select Michigan Severe Storms
SBA ONLINE: DisasterLoanAssistance.SBA.gov

3



BY PHONE

800-621-3362
or TTY 800-462-7585
for those with hearing or speech impairments

Helping families navigate crisis





Responding to Community Issues

VacunaQue? MI Latinx Coalition



WGN Studios

RE:VISION

RVSN Studios is a creative design studio grounded in editing + improving spaces of varying scales. We believe **change is good**, and we're here to help as your needs shift. Wherever you are in your process to realize a new space, take your next step with us.

PEOPLE FIRST

Through an intentionally collaborative design process, we strive to support clients who are working to make real change within their own communities. With a broad range of expertise, RVSN Studios prioritizes creating healthy, strong connections between people and an equitable built environment.





WHAT WE SEE

OUR VISION STATEMENT FOR THE NEIGHBORHOOD

Our work prioritizes both place building and people building, focusing intentionally on Black ownership and agency. Taking 43 parcels already under our control, we hope to advance the following goals:

01

02

03

HEALTH

Establish an innovative neighborhood park and resource hub to improve health outcomes, youth engagement, and family stability

WEALTH

Support and expand options and assets of black homeowners through single-family housing development and vacant lot beautification

AGENCY

Restore a sense of place and pride by engaging residents to reimagine existing resources, offering all necessary commercial, educational, recreational, and health services within a twenty-minute walk for residents and visitors

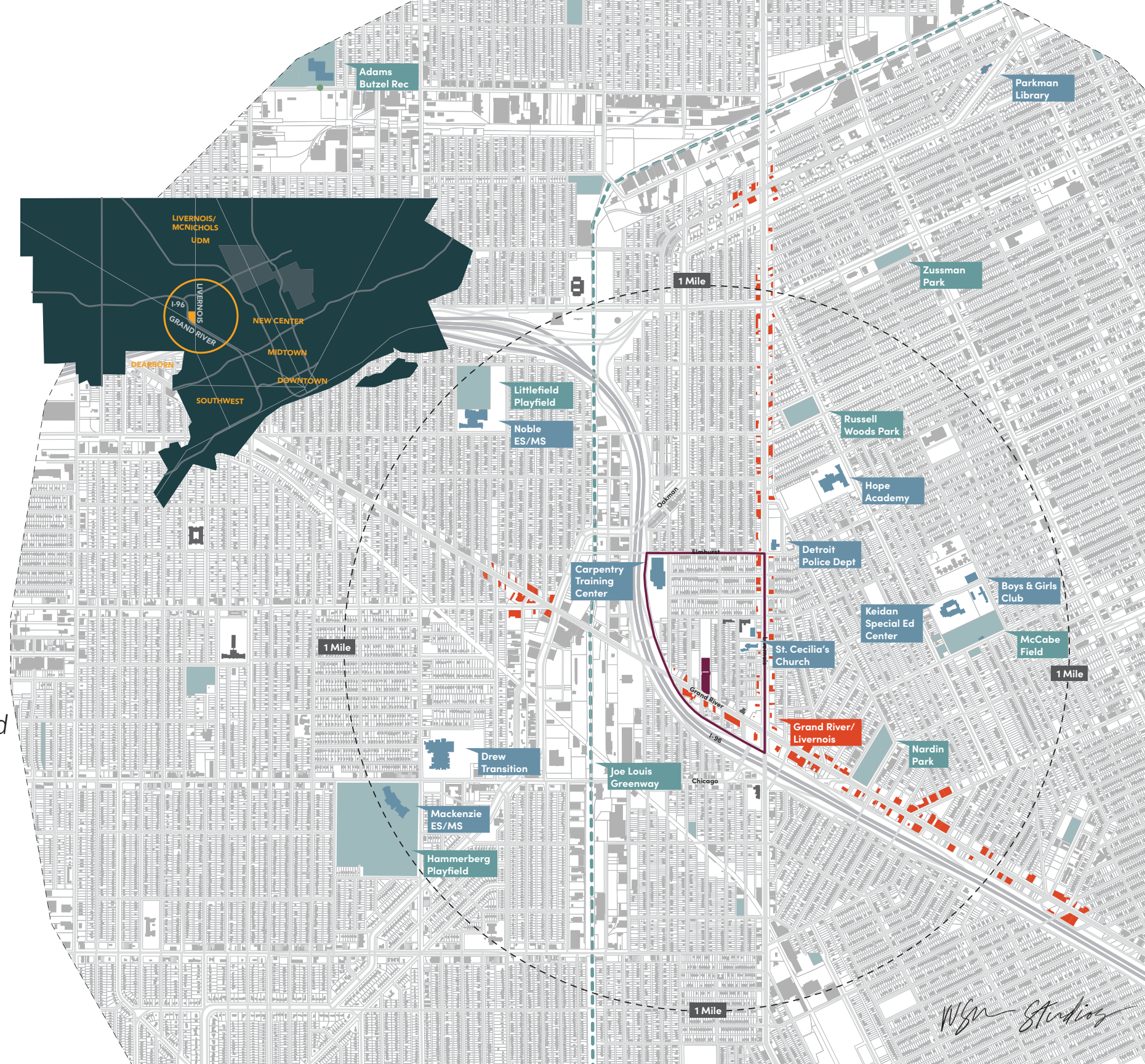
ABOUT GRAND RIVER / LIVERNOIS

Opportunities

- Excellent location
- Highly accessible
- Strong local institutions and organizations
- New carpentry training center
- Near future Joe Louis Greenway
- Dedicated residents

Challenges

- High residential vacancy
- Lack of neighborhood-oriented businesses and health-oriented resources
- Safety is a major concern
- No parks or public open space
- Grand River & Livernois are car-dominated



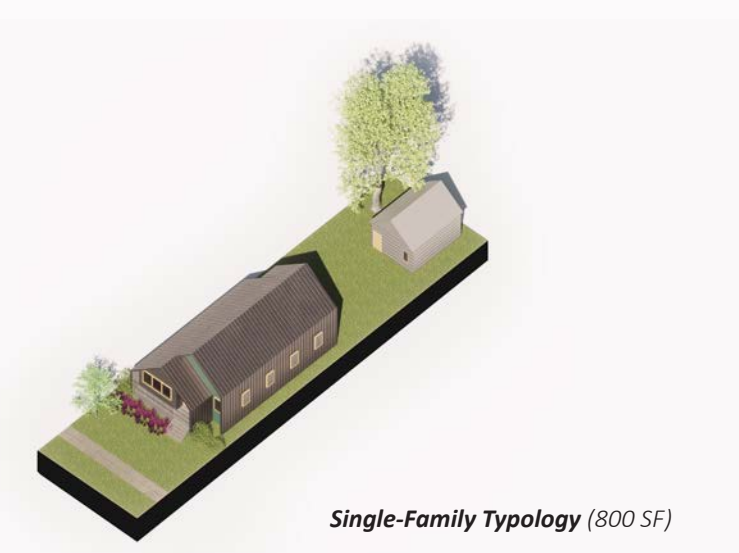
CURRENT VIEW ON PRAIRIE



RESIDENTIAL INFILL ON PRAIRIE



W&S Studios



BURLINGAME AND PRAIRIE HOUSING + RECREATIONAL INFILL

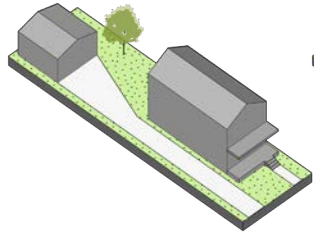


ACCESSIBLE NEIGHORHOOD RESOURCES + WALKABILITY

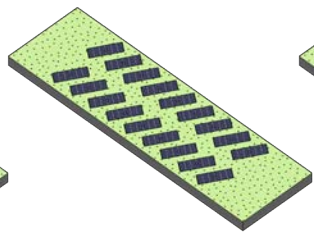


OPEN SPACE + NEIGHBORHOOD PASSPORT TYPES

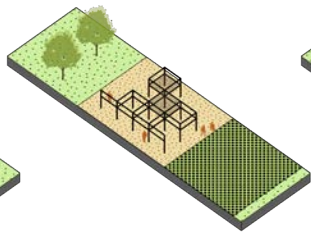
PERMANENT INTERVENTIONS



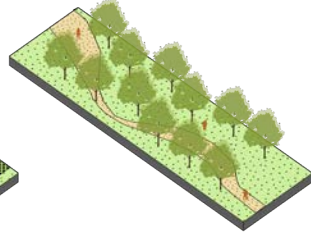
SF HOME



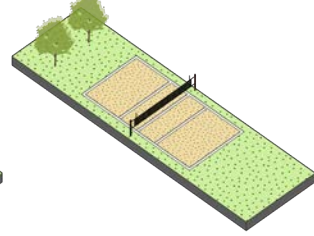
SOLAR PANELS



PAVILION
PLAYSCAPE

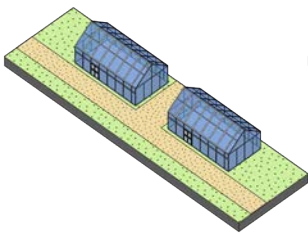


PLANTED
TREE MEADOW

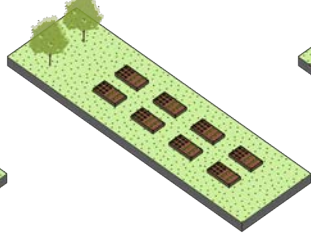


ATHLETIC
COURTS

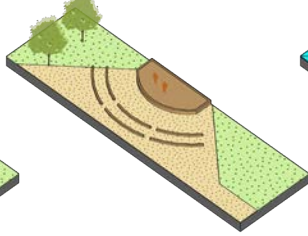
TEMPORARY INTERVENTIONS



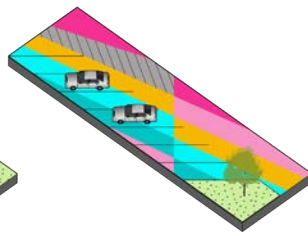
GREEN HOUSES



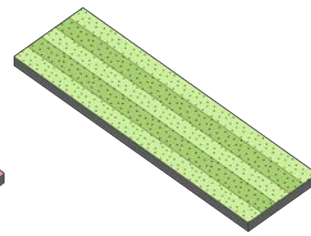
URBAN GARDEN



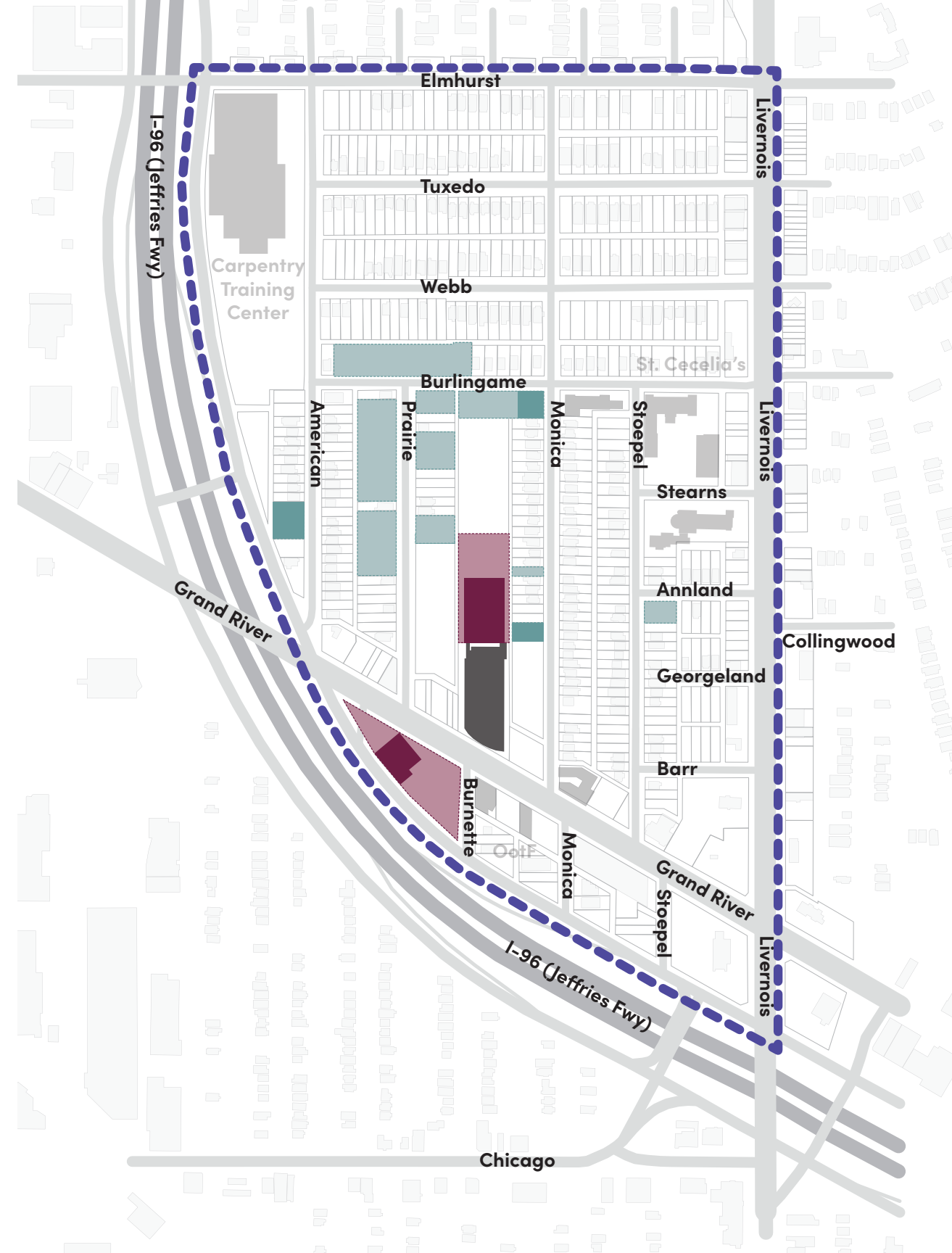
PERFORMANCE
SPACE



VIBRANT
PARKING



MAINTAIN
GRASS



OPEN LOT ACTIVATION + NEIGHBORHOOD AMENITIES



STABILIZED STREETS + CONNECTIVITY



WGA Studios

ACTIVATED LOTS

PROGRAMMED PATH

RESOURCE HUB

MERIT PARK

RESIDENTIAL INFILL





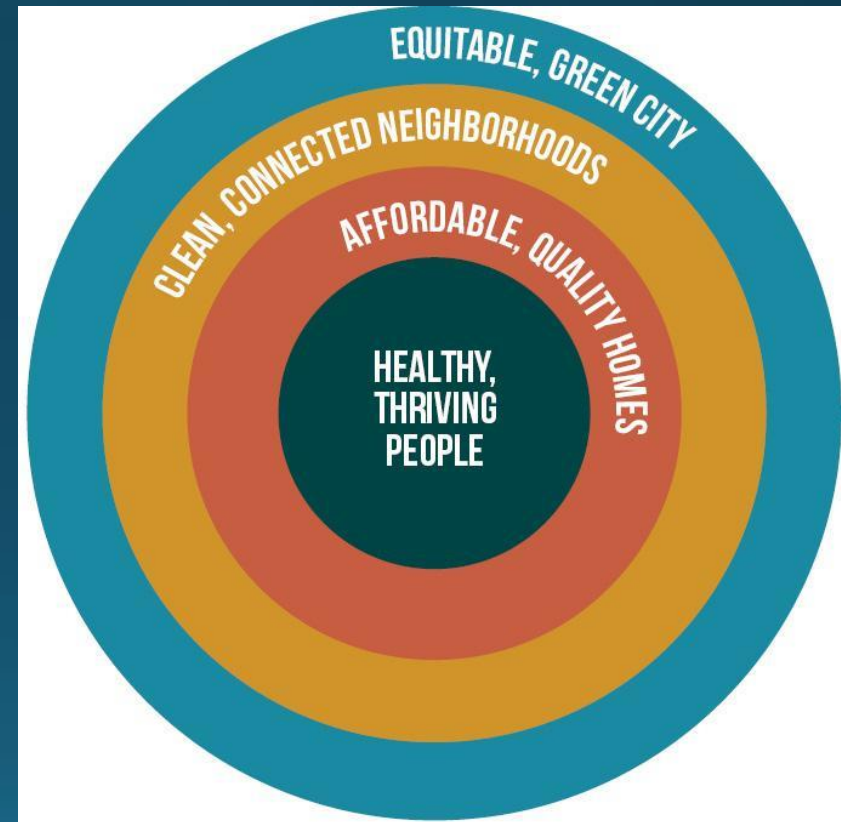


STRAIGHT GATE
INTERNATIONAL CHURCH



**Office of
Sustainability**

THE DETROIT SUSTAINABILITY ACTION AGENDA



10 GOALS



Healthy, Thriving People

- Improve **air quality** and reduce impacts from **pollution**
- Increase access to healthy **food, green spaces,** and **recreation** opportunities
- Advance **equity** in access to **economic opportunity**



Clean, Connected Neighborhoods

- Transform **vacant lots and structures** into safe, productive, sustainable spaces
- Reduce **waste** sent to landfills
- Make it easier and safer to **get around Detroit** without a personal vehicle



Affordable, Quality Homes

- Reduce the total **costs** of housing, including **utilities**
- Improve the **health** and **safety** of existing and new housing



Equitable, Green City

- Enhance infrastructure and operations to improve **resilience to climate impacts**
- Reduce municipal and citywide **greenhouse gas emissions**

What is the Detroit Climate Strategy?

A vision for Detroit's future where we:

- Reduce our carbon pollution
- Are prepared for climate impacts (flooding, heat)

and informs city investments and priorities for the next 5-25 years based on:

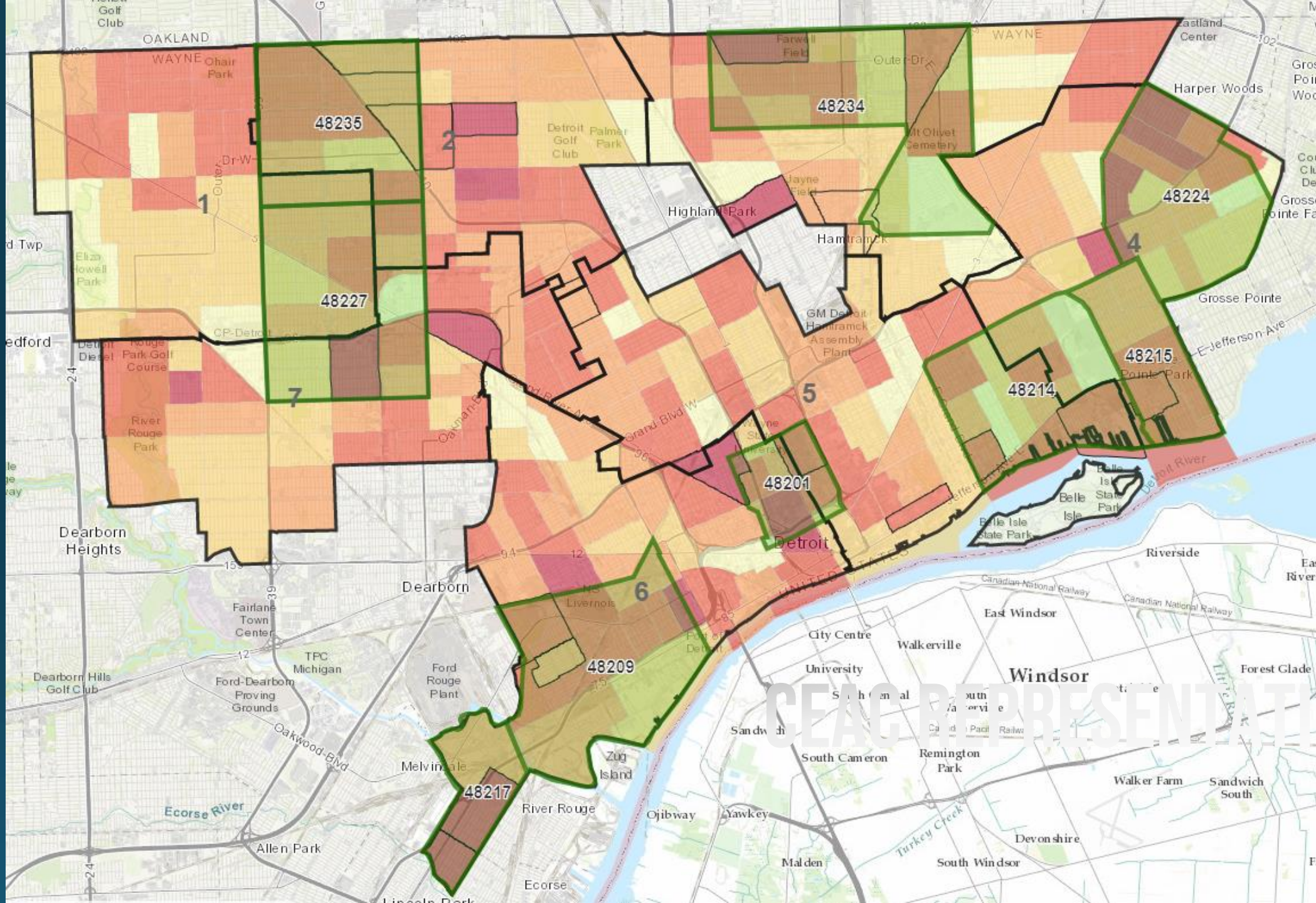
- Technical analyses (eg. GHG analysis, Climate vulnerability map)
- Surveys
- Focus groups & townhalls
- Input from the CEAC and intergovernmental workgroup

Will be completed by August, 2022.

Climate Equity Advisory Council was formed in 2021, and includes

Brenda Faye Butler	
Candace Calloway	
Dolores Perales	48201
Donele Wilkens	48203
Erma Leaphart	48204
Gary Gray	48209
Janlynn Miller	48214
Molly Kosnak	48217
Nya Marshall	48219
Reba Neely	48224
Ricky Ackerman	48227
Roslyn Ogburn	48234
Sherelle Streeter	49235
Theresa Landrum	

Environmental/Climate Justice Advocate
Education/Youth
Homeless/Unhoused
Refugee/Immigrant
Resident affected by climate impacts



CEAC REPRESENTATION

Detroit Climate Strategy

Our low carbon future *(aka "mitigation")*

- Opportunities in the clean energy economy
- Affordable & accessible energy
- Doing our part to cut carbon pollution

Preparing for climate impacts *(aka "adaptation")*

- Rising above the floods
- Ready for extreme weather
- Resilient buildings, transit, and infrastructure

EQUITY

Detroit Climate Strategy

Our low carbon future *(aka "mitigation")*

- Efficient & zero carbon buildings
- Renewable energy
- Electric appliances & vehicles
- Public transit and non-motorized travel





Preparing for climate impacts *(aka "adaptation")*

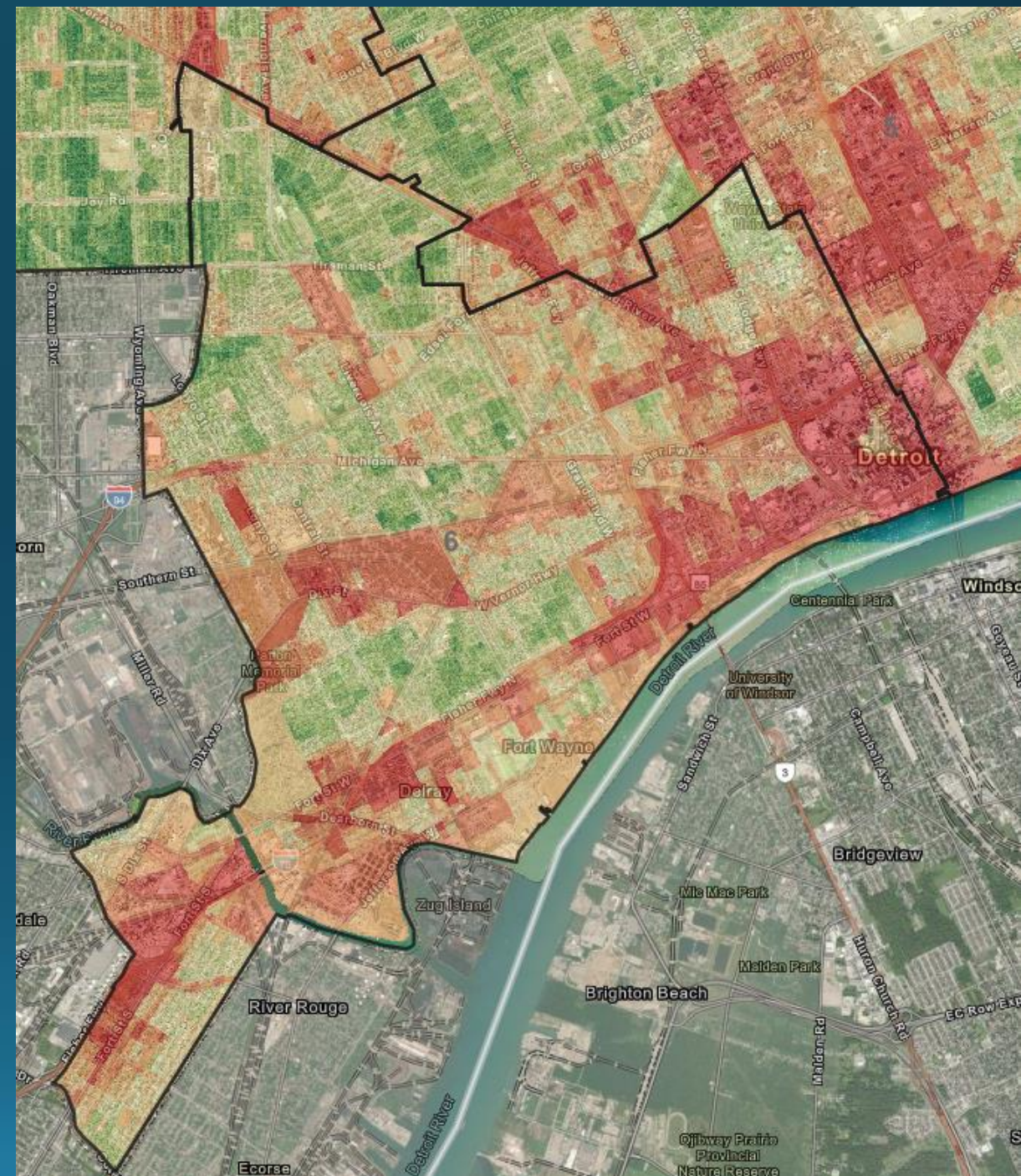
- Green stormwater infrastructure
- Utility infrastructure upgrades and maintenance
- Neighborhood resilience hubs
- Emergency response plans & resources

Trees
Micro-grids

EQUITY

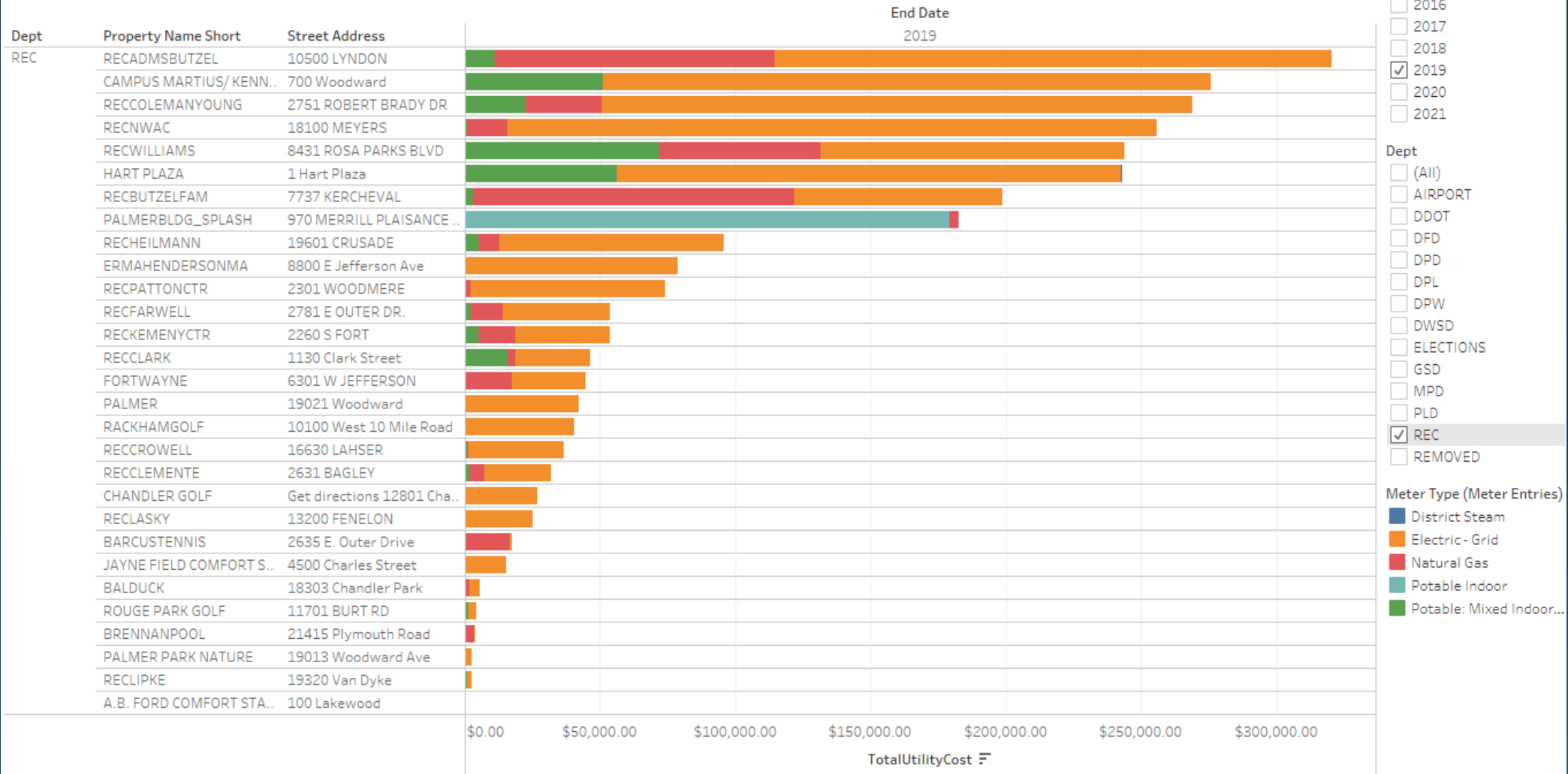
Prioritizing Tree Planting

PLANTING STRATEGY		KEY GOALS
NEIGHBORHOOD TREE CANOPY		LOW CANOPY NEIGHBORHOODS, CITY PLANNING LOCATIONS, HIGH POPULATION DENSITY, VULNERABLE POPULATIONS
VEGETATIVE BUFFERS		RESIDENTIAL OR SCHOOL PROXIMITY TO HEAVY TRAFFIC CORRIDORS, VULNERABLE POPULATIONS
LAND-BASED VENTURES		CONTIGUOUS VACANT LOTS WITH LOWER HOUSING STOCK, PROXIMITY TO SCHOOLS OR TRAINING CENTERS, ZONING
PARKS & GREENWAYS		PROXIMITY TO OR IN PARKS AND GREENWAYS WITH LOW TREE CANOPY COVER, CITY PLANNING LOCATIONS
COMMERCIAL CORRIDOR PLANTINGS		TARGETTED COMMERCIAL, CULTURAL, OR ROADWAY IMPROVEMENT LOCATIONS, "HEAT ISLAND" SITES
LOW POPULATION AREAS		LOW FUTURE DEVELOPMENT POTENTIAL AREAS, PROXIMITY TO AREAS OF CONCERN, FLOOD AREAS, PROXIMITY TO OUTDOOR RECREATION AREAS



Utility Dashboard for City Facilities

Total Utility Cost by Bldg (estimated based on usage)

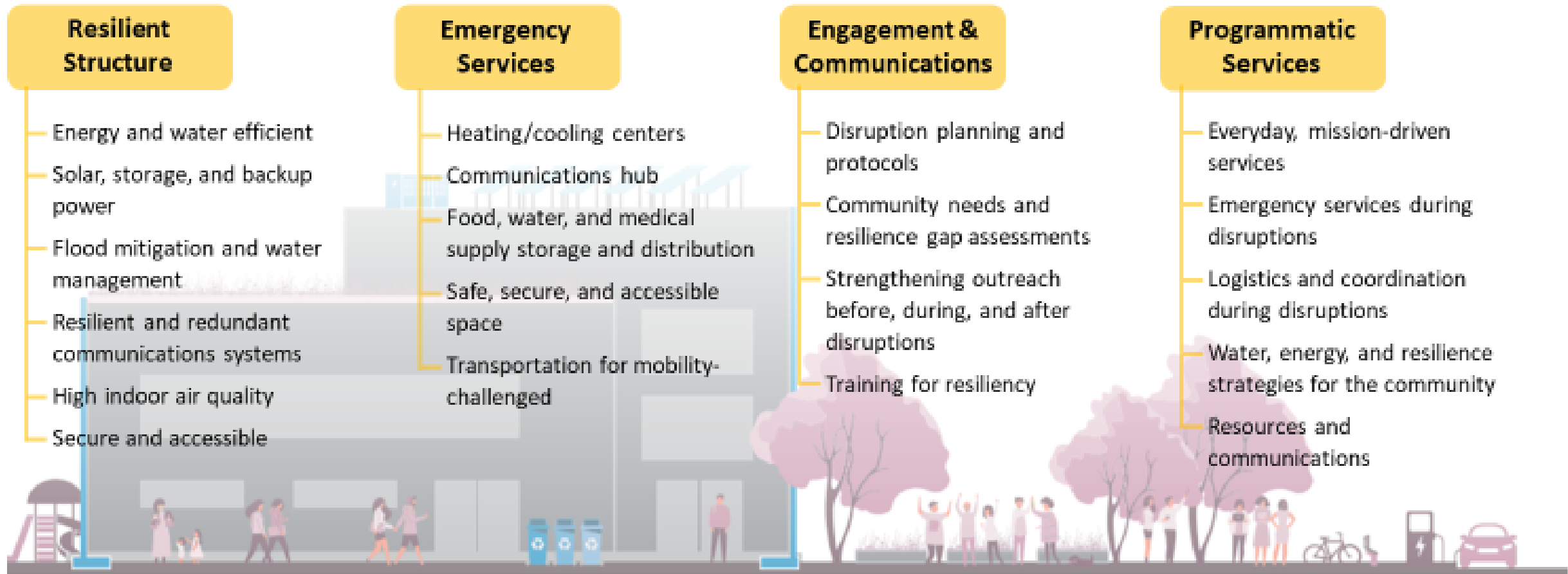


D4 - Building a Network on the Eastside

Envisioning a Network of Resilience Hubs across Detroit's Eastside
Walkable, accessible, and always available



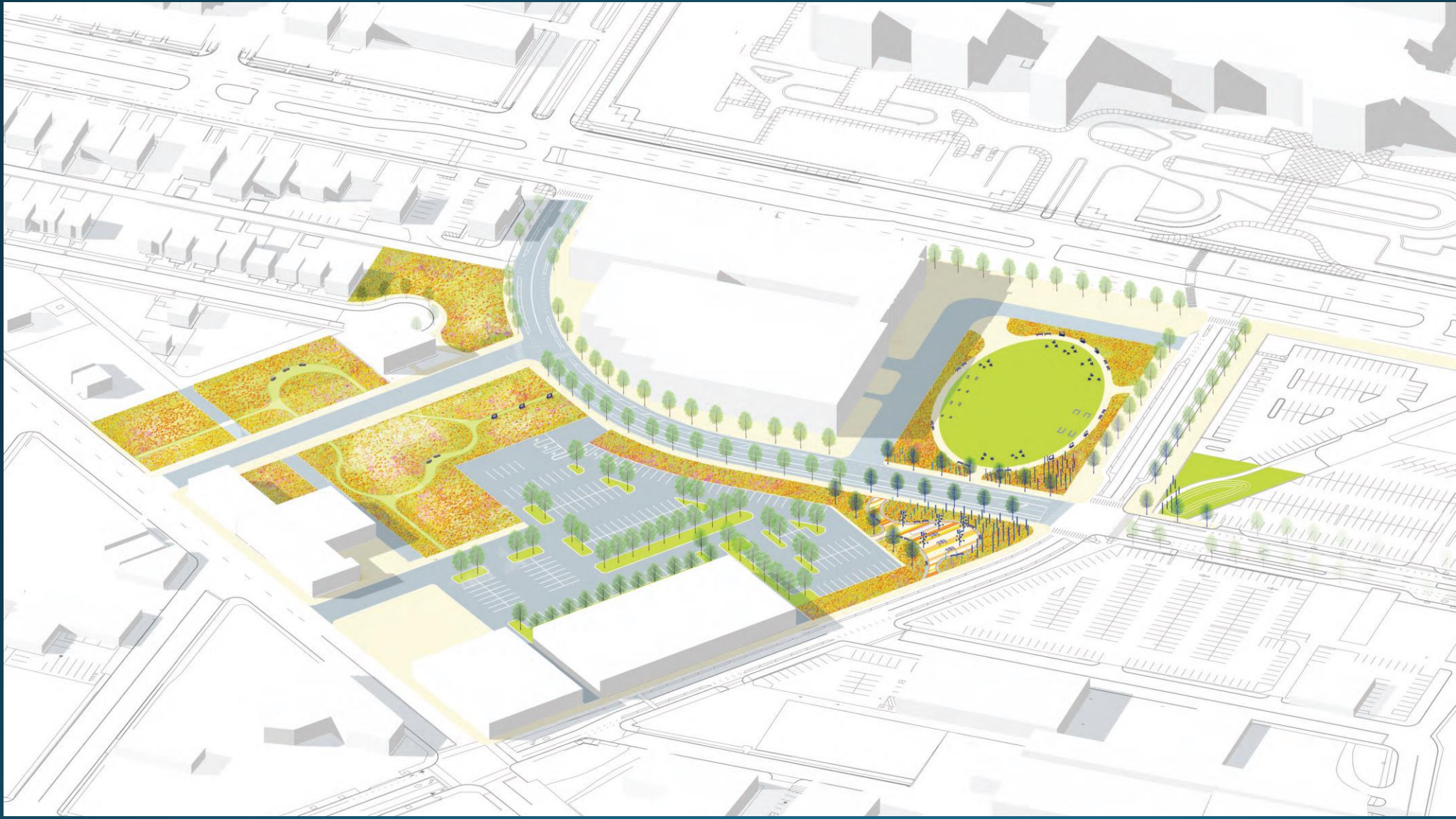
Recreation Centers as Resilience Hubs



Anchor Initiatives







HENRY FORD HEALTH®

